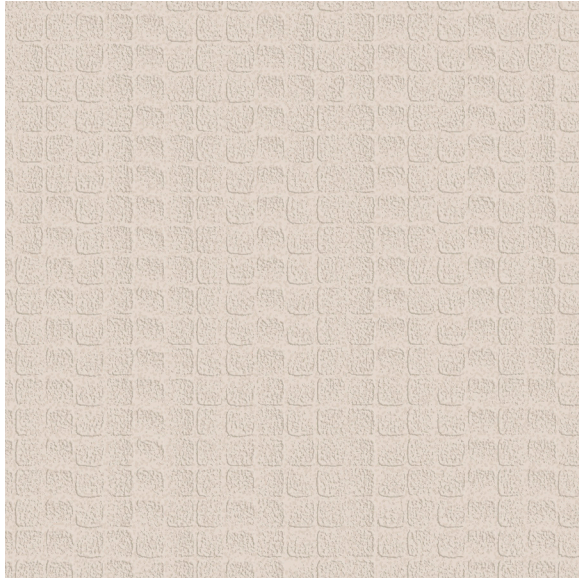




CARLISLE & CO.

WALLCOVERINGS

— EST. 1998 —




HIGH PERFORMANCE VINYL

CASCADE

LX1686 ROSÉ

WIDTH:	54" (137,1 cm) Untrimmed Trims to 52" (132,08 cm)
REPEAT:	Random
BACKING:	Osnaburg
FLAME RATING:	ASTM E84 Class A
WEIGHT:	20 oz. Type II Vinyl
MATCH:	Non-Reversible
MAINTENANCE:	Scrubable/Washable

 Advanced antimicrobial technology made with EPA-registered ingredients.

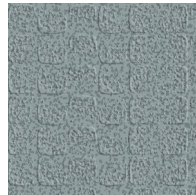
MORE COLORS



LX1680
Porcelain



LX1681
Oatmeal



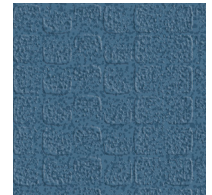
LX1682
Stone



LX1683
Platinum



LX1684
Taupe



LX1685
Cerulean



LX1686
Rosé



LX1687
Anchor

TO THE TRADE

US MARKETS

Exclusively through Holly Hunt

hollyhunt.com

INTERNATIONAL MARKETS

800.220.6730

carlisleco.com