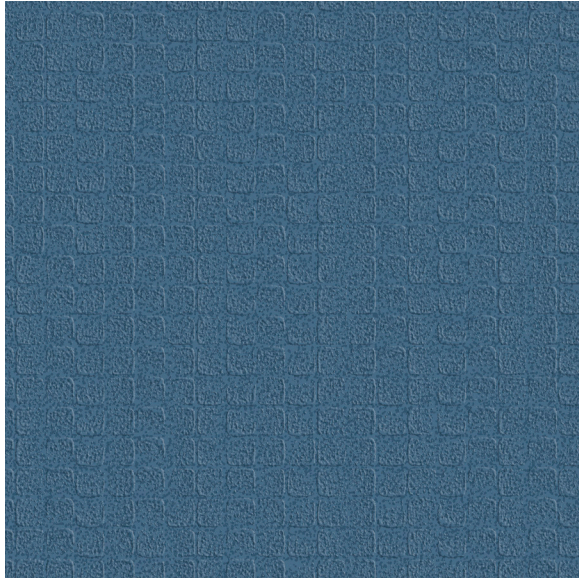




# CARLISLE & CO.

WALLCOVERINGS

— EST. 1998 —



HIGH PERFORMANCE VINYL

# CASCADE



## LX1685 CERULEAN

- WIDTH:** 54" (137,1 cm) Untrimmed  
Trims to 52" (132,08 cm)
- REPEAT:** Random
- BACKING:** Osnaburg
- FLAME RATING:** ASTM E84 Class A
- WEIGHT:** 20 oz. Type II Vinyl
- MATCH:** Non-Reversible
- MAINTENANCE:** Scrubbable/Washable

 Advanced antimicrobial technology made with EPA-registered ingredients.

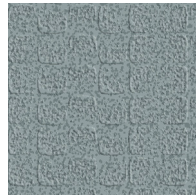
## MORE COLORS



LX1680  
Porcelain



LX1681  
Oatmeal



LX1682  
Stone



LX1683  
Platinum



LX1684  
Taupe



LX1685  
Cerulean



LX1686  
Rosé



LX1687  
Anchor

## TO THE TRADE

### US MARKETS

Exclusively through Holly Hunt

[hollyhunt.com](http://hollyhunt.com)

### INTERNATIONAL MARKETS

800.220.6730

[carlisleco.com](http://carlisleco.com)