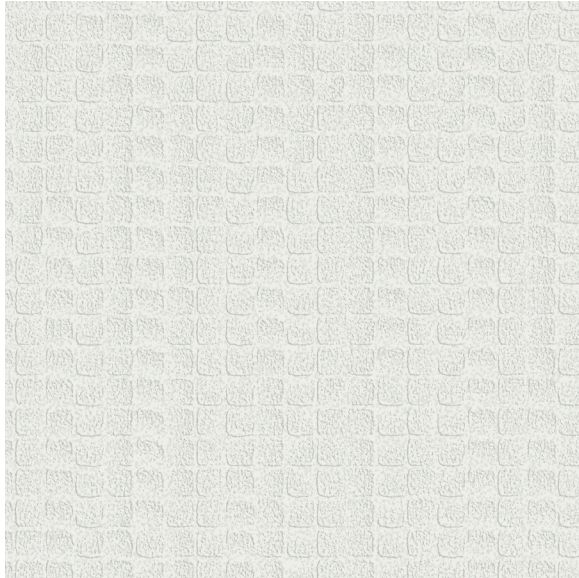




# CARLISLE & CO.

WALLCOVERINGS

— EST. 1998 —




HIGH PERFORMANCE VINYL

## CASCADE

### LX1683 PLATINUM

|                      |  |
|----------------------|--|
| <b>WIDTH:</b>        | 54" (137,1 cm) Untrimmed<br>Trims to 52" (132,08 cm) |
| <b>REPEAT:</b>       | Random   |
| <b>BACKING:</b>      | Osnaburg   |
| <b>FLAME RATING:</b> | ASTM E84 Class A                                     |
| <b>WEIGHT:</b>       | 20 oz. Type II Vinyl                                 |
| <b>MATCH:</b>        | Non-Reversible                                       |
| <b>MAINTENANCE:</b>  | Scrubable/Washable                                   |

 Advanced antimicrobial technology made with EPA-registered ingredients.

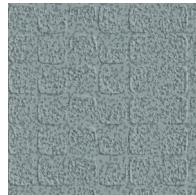
## MORE COLORS



LX1680  
Porcelain



LX1681  
Oatmeal



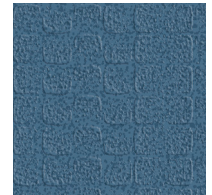
LX1682  
Stone



LX1683  
Platinum



LX1684  
Taupe



LX1685  
Cerulean



LX1686  
Rosé



LX1687  
Anchor

## TO THE TRADE

### US MARKETS

Exclusively through Holly Hunt

[hollyhunt.com](http://hollyhunt.com)

### INTERNATIONAL MARKETS

800.220.6730

[carlisleco.com](http://carlisleco.com)