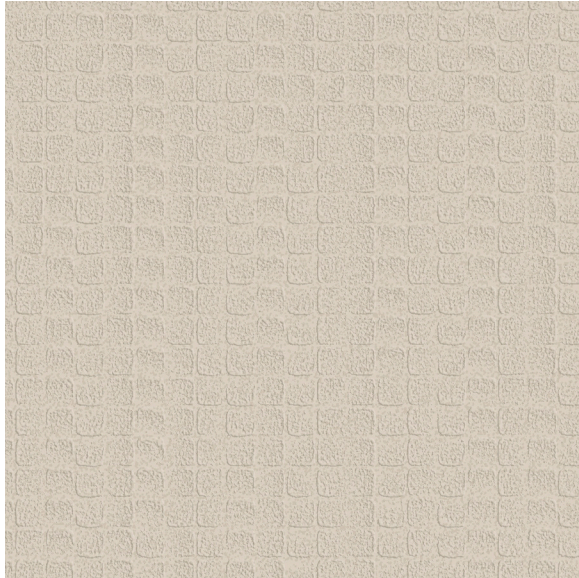




CARLISLE & CO.[®]

WALLCOVERINGS

— EST. 1998 —



HIGH PERFORMANCE VINYL

CASCADE 

LX1681 OATMEAL

- WIDTH:** 54" (137,1 cm) Untrimmed
Trims to 52" (132,08 cm)
- REPEAT:** Random
- BACKING:** Osnaburg
- FLAME RATING:** ASTM E84 Class A
- WEIGHT:** 20 oz. Type II Vinyl
- MATCH:** Non-Reversible
- MAINTENANCE:** Scrubbable/Washable

 Advanced antimicrobial technology made with EPA-registered ingredients.

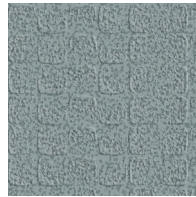
MORE COLORS



LX1680
Porcelain



LX1681
Oatmeal



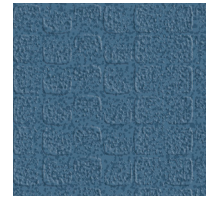
LX1682
Stone



LX1683
Platinum



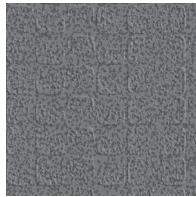
LX1684
Taupe



LX1685
Cerulean



LX1686
Rosé



LX1687
Anchor

TO THE TRADE

US MARKETS

Exclusively through Holly Hunt

hollyhunt.com

INTERNATIONAL MARKETS

800.220.6730

carlisleco.com