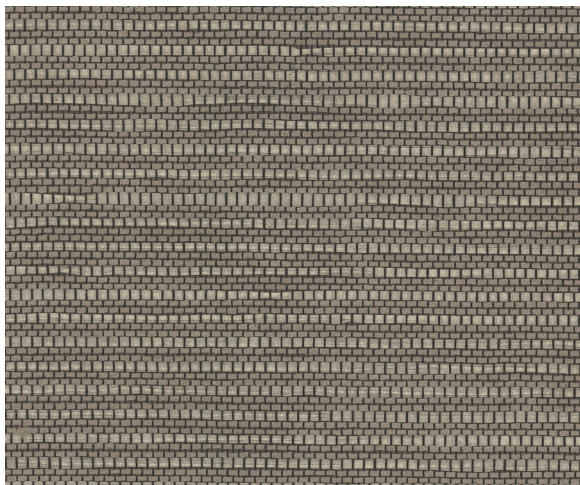


NATURALS

EVERGLADE

A unique weave of grass combined with cotton has distinctive appeal when the natural strands are tip printed, adding depth and textural nuance. An organic palette of light neutrals and rich hues adds panache to this exceptional texture.

LX1650 DRIFTWOOD



SPECIFICATIONS

| | |
|---------------|-------------------------|
| WIDTH: | 36" (91,44 cm) Trimmed |
| REPEAT: | None |
| MATCH: | Random |
| BACKING: | Non-Woven |
| CONTENT: | 50% Paper, 50% Wax Rope |
| FLAME RATING: | ASTM E84 Class A |
| MAINTENANCE: | Soft Dry Brush |
| BOLT SIZE: | 8 yd (7,32 m) |

ADDITIONAL INFORMATION

Unique hanging instructions accompany all products. Hiring a professional installer for these specialty products is recommended.

Color and texture may vary slightly due to the organic quality of the substrate material. These subtle differences should be celebrated as the mark of being hand-made.

ORDERING:

| | |
|------------------|----------------------------|
| PRICING: | Priced by the linear yard. |
| MINIMUM ORDER: | 8 yd (7,32 m) |
| ORDER INCREMENT: | 8 yd (7,32 m) |
| STOCK: | USA |

Memos available upon request.

MORE COLORS



LX1645 Porcelain



LX1646 Heather



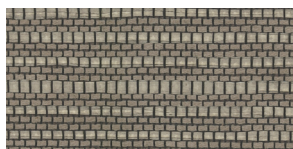
LX1647 Stone



LX1648 Soft Silver



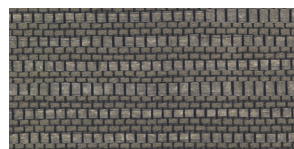
LX1649 Taupe



LX1650 Driftwood



LX1651 Steel Blue



LX1652 Anchor

TO THE TRADE

US MARKETS

Exclusively through Holly Hunt
hollyhunt.com

CANADA MARKETS

Crown Surface Solutions
crownsurfacesolutions.com

INTERNATIONAL MARKETS

800.220.6730
carlisleco.com