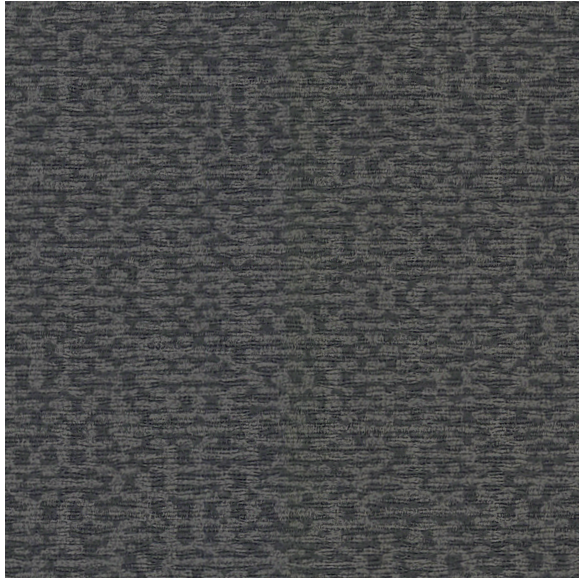




CARLISLE & CO.®

WALLCOVERINGS

— EST. 1998 —



HIGH PERFORMANCE VINYL

CATENA

LX1630 ANCHOR

WIDTH:	54" (137,1 cm) Untrimmed Trims to 52" (132,08 cm)
REPEAT:	Random
BACKING:	Osnaburg
FLAME RATING:	ASTM E84 Class A
WEIGHT:	20 oz. Type II Vinyl
MATCH:	Reversible
MAINTENANCE:	Scrubable/Washable

MORE COLORS



LX1625
Oatmeal



LX1626
Taupe



LX1627
Terracotta



LX1628
Soft Silver



LX1629
Heather



LX1630
Anchor



LX1631
Ash



LX1632
Steel Blue

TO THE TRADE

US MARKETS

Exclusively through Holly Hunt

hollyhunt.com

INTERNATIONAL MARKETS

800.220.6730

carlisleco.com