



CARLISLE & CO.<sup>®</sup>

WALLCOVERINGS

— EST. 1998 —



HIGH PERFORMANCE VINYL  
INSIGNIA

LX1619 OATMEAL

- WIDTH:** 54" (137,1 cm) Untrimmed  
Trims to 52" (132,08 cm)
- REPEAT:** 1½" (3,81 cm)
- BACKING:** Osnaburg
- FLAME RATING:** ASTM E84 Class A
- WEIGHT:** 24 oz. Type II Vinyl
- MATCH:** Straight/Non-Reversible
- MAINTENANCE:** Scrubbable/Washable

MORE COLORS



LX1615  
Porcelain



LX1616  
Taupe



LX1617  
Dove



LX1618  
Sandstone



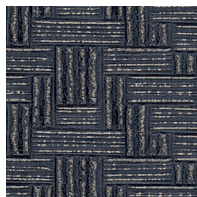
LX1619  
Oatmeal



LX1620  
Driftwood



LX1621  
Anchor



LX1622  
Steel Blue

TO THE TRADE

US MARKETS

Exclusively through Holly Hunt

[hollyhunt.com](http://hollyhunt.com)

INTERNATIONAL MARKETS

800.220.6730

[carlisleco.com](http://carlisleco.com)