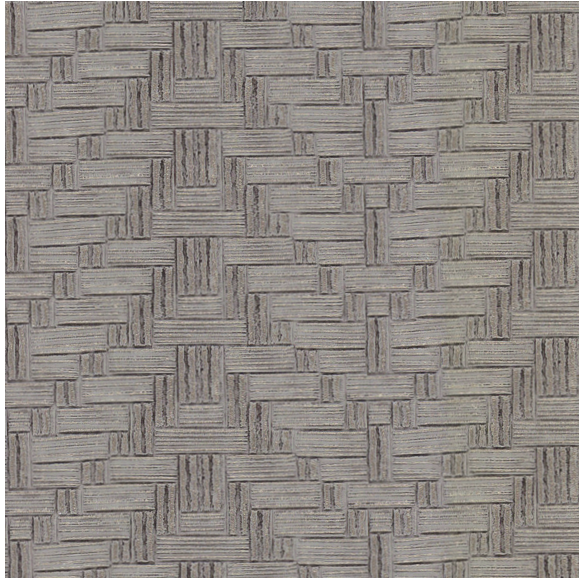




CARLISLE & CO.®

WALLCOVERINGS

— EST. 1998 —



HIGH PERFORMANCE VINYL
INSIGNIA

LX1617 DOVE

- WIDTH:** 54" (137,1 cm) Untrimmed
Trims to 52" (132,08 cm)
- REPEAT:** 1½" (3,81 cm)
- BACKING:** Osnaburg
- FLAME RATING:** ASTM E84 Class A
- WEIGHT:** 24 oz. Type II Vinyl
- MATCH:** Straight/Non-Reversible
- MAINTENANCE:** Scrubbable/Washable

MORE COLORS



LX1615
Porcelain



LX1616
Taupe



LX1617
Dove



LX1618
Sandstone



LX1619
Oatmeal



LX1620
Driftwood



LX1621
Anchor



LX1622
Steel Blue

TO THE TRADE

US MARKETS

Exclusively through Holly Hunt

hollyhunt.com

INTERNATIONAL MARKETS

800.220.6730

carlisleco.com