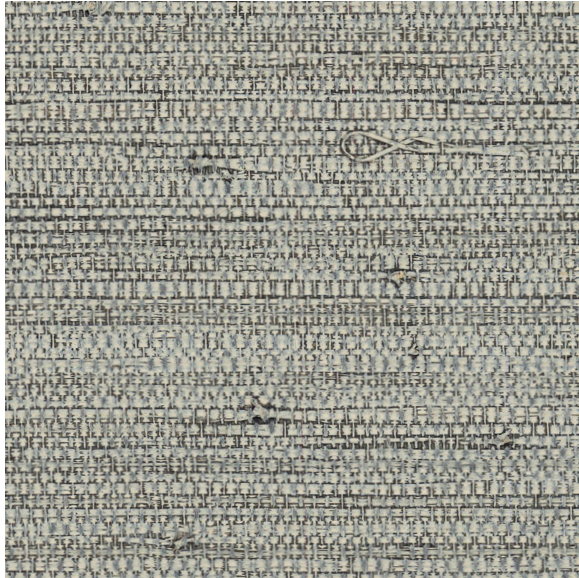




# CARLISLE & CO.

WALLCOVERINGS

— EST. 1998 —



## NATURALS

# PALMYRA

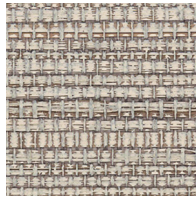
## LX1608 STONE

WIDTH:	36" (91,4 cm) Trimmed
REPEAT:	None
BACKING:	Non-Woven
FLAME RATING:	ASTM E84 Class A
BOLT SIZE:	8 yd (7,32 m)
MATCH:	Random
MINIMUM ORDER:	8 yd (7,32 m)
MAINTENANCE:	Soft Dry Brush

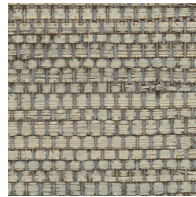
## MORE COLORS



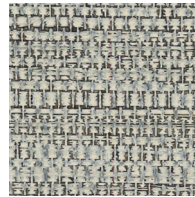
LX1605  
Porcelain



LX1606  
Pebble



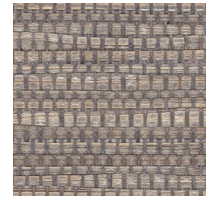
LX1607  
Wicker



LX1608  
Stone



LX1609  
Oatmeal



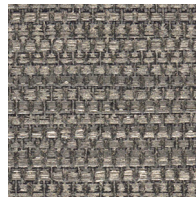
LX1610  
Taupe



LX1611  
Dove



LX1612  
Terracotta



LX1613  
Anchor



LX1614  
Steel Blue

## TO THE TRADE

### US MARKETS

Exclusively through Holly Hunt

[hollyhunt.com](http://hollyhunt.com)

### INTERNATIONAL MARKETS

800.220.6730

[carlisleco.com](http://carlisleco.com)