



CARLISLE & CO.®

WALLCOVERINGS

— EST. 1998 —

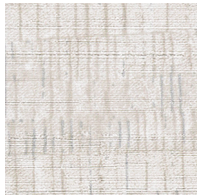


HIGH PERFORMANCE VINYL  
MERIDIAN

LX1592 DOVE

- WIDTH:** 55½" (140,9 cm) Untrimmed  
Trims to 54" (137,1 cm)
- REPEAT:** Random
- BACKING:** Non-Woven
- FLAME RATING:** ASTM E84 Class A
- WEIGHT:** 20 oz. Type II Vinyl
- MATCH:** Non-Reversible
- MAINTENANCE:** Scrubbable/Washable

MORE COLORS



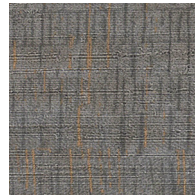
LX1585  
Platinum



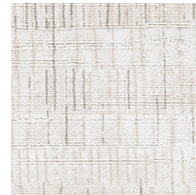
LX1586  
Ash



LX1587  
Fog



LX1588  
Anchor



LX1589  
Porcelain



LX1590  
Oatmeal



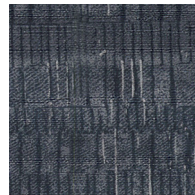
LX1591  
Glacier



LX1592  
Dove



LX1593  
Stone



LX1594  
Twilight

TO THE TRADE

US MARKETS

Exclusively through Holly Hunt

hollyhunt.com

INTERNATIONAL MARKETS

800.220.6730

carlisleco.com