



CARLISLE & CO.

WALLCOVERINGS

— EST. 1998 —

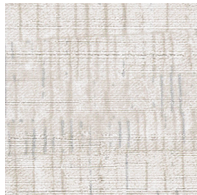


HIGH PERFORMANCE VINYL MERIDIAN

LX1586 ASH

WIDTH:	55½" (140,9 cm) Untrimmed Trims to 54" (137,1 cm)
REPEAT:	Random
BACKING:	Non-Woven
FLAME RATING:	ASTM E84 Class A
WEIGHT:	20 oz. Type II Vinyl
MATCH:	Non-Reversible
MAINTENANCE:	Scrubbable/Washable

MORE COLORS



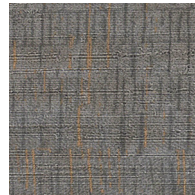
LX1585
Platinum



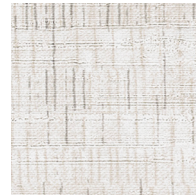
LX1586
Ash



LX1587
Fog



LX1588
Anchor



LX1589
Porcelain



LX1590
Oatmeal



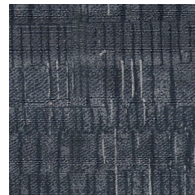
LX1591
Glacier



LX1592
Dove



LX1593
Stone



LX1594
Twilight

TO THE TRADE

US MARKETS

Exclusively through Holly Hunt

hollyhunt.com

INTERNATIONAL MARKETS

800.220.6730

carlisleco.com