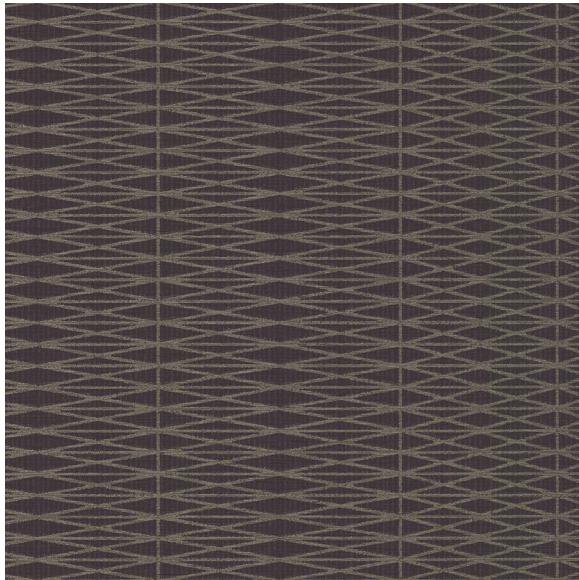




# CARLISLE & CO.

WALLCOVERINGS

— EST. 1998 —



## HIGH PERFORMANCE VINYL TECIDO VINYL

### LX1563 MULBERRY

|                      |  |
|----------------------|--|
| <b>WIDTH:</b>        | 55½" (140,9 cm) Untrimmed<br>Trims to 54" (137,1 cm) |
| <b>REPEAT:</b>       | Random   |
| <b>BACKING:</b>      | Non-Woven  |
| <b>FLAME RATING:</b> | ASTM E84 Class A                                     |
| <b>WEIGHT:</b>       | 20 oz. Type II Vinyl                                 |
| <b>MATCH:</b>        | Non-Reversible                                       |
| <b>MAINTENANCE:</b>  | Scrubable/Washable                                   |

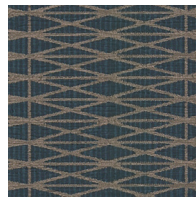
## MORE COLORS



LX1556  
Porcelain



LX1557  
Taupe



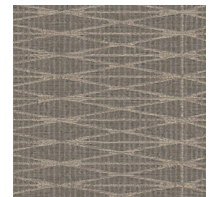
LX1558  
Emerald



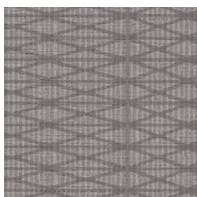
LX1559  
Platinum



LX1560  
Soft Silver



LX1561  
Dove



LX1562  
Heather



LX1563  
Mulberry

## TO THE TRADE

### US MARKETS

Exclusively through Holly Hunt

[hollyhunt.com](http://hollyhunt.com)

### INTERNATIONAL MARKETS

800.220.6730

[carlisleco.com](http://carlisleco.com)