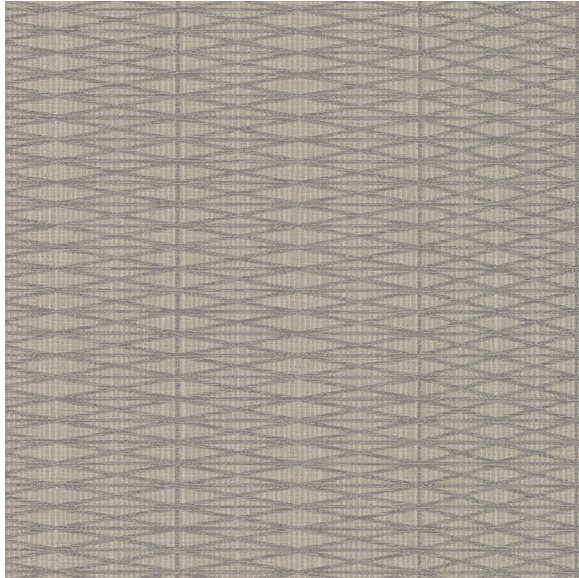




# CARLISLE & CO.

WALLCOVERINGS

— EST. 1998 —

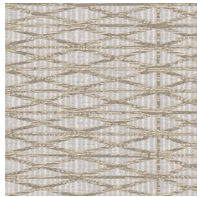


## HIGH PERFORMANCE VINYL TECIDO VINYL

### LX1557 TAUPE

<b>WIDTH:</b>	55½" (140,9 cm) Untrimmed Trims to 54" (137,1 cm)
<b>REPEAT:</b>	Random
<b>BACKING:</b>	Non-Woven
<b>FLAME RATING:</b>	ASTM E84 Class A
<b>WEIGHT:</b>	20 oz. Type II Vinyl
<b>MATCH:</b>	Non-Reversible
<b>MAINTENANCE:</b>	Scrubable/Washable

## MORE COLORS



LX1556  
Porcelain



LX1557  
Taupe



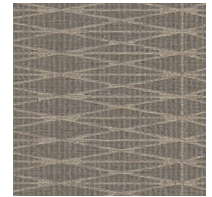
LX1558  
Emerald



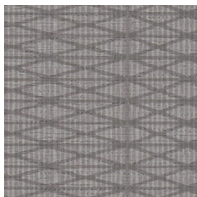
LX1559  
Platinum



LX1560  
Soft Silver



LX1561  
Dove



LX1562  
Heather



LX1563  
Mulberry

## TO THE TRADE

### US MARKETS

Exclusively through Holly Hunt

[hollyhunt.com](http://hollyhunt.com)

### INTERNATIONAL MARKETS

800.220.6730

[carlisleco.com](http://carlisleco.com)