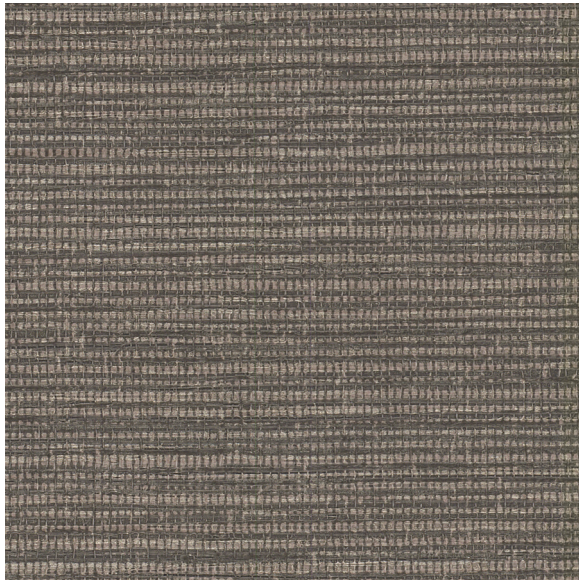




CARLISLE & CO.

WALLCOVERINGS

— EST. 1998 —



HIGH PERFORMANCE VINYL
SISAL VINYL

LX1553 DOVE

- WIDTH: 55½" (140,9 cm) Untrimmed
Trims to 54" (137,1 cm)
- REPEAT: Random
- BACKING: Non-Woven
- FLAME RATING: ASTM E84 Class A
- WEIGHT: 20 oz. Type II Vinyl
- MATCH: Non-Reversible
- MAINTENANCE: Scrubbable/Washable

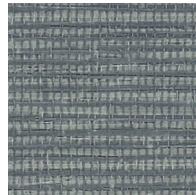
MORE COLORS



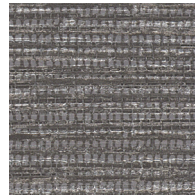
LX1544
Soft Silver



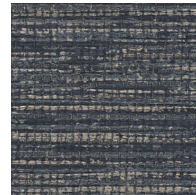
LX1545
Platinum



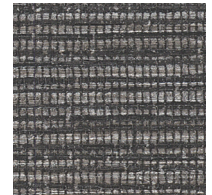
LX1546
Stone



LX1547
Anchor



LX1548
Twilight



LX1549
Onyx



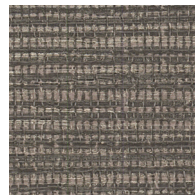
LX1550
Porcelain



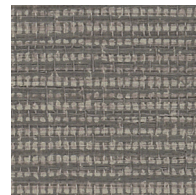
LX1551
Pebble



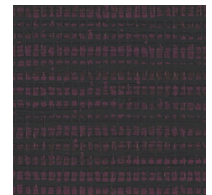
LX1552
Ochre



LX1553
Dove



LX1554
Driftwood



LX1555
Mulberry

TO THE TRADE

US MARKETS

Exclusively through Holly Hunt

hollyhunt.com

INTERNATIONAL MARKETS

800.220.6730

carlisleco.com