



CARLISLE & CO.®

WALLCOVERINGS

— EST. 1998 —



DIGITAL  
NAVARO

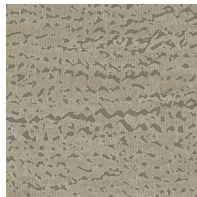
LX1541 DOVE

<b>WIDTH:</b>	36" (91,4 cm) Untrimmed Trims to 33½" (85 cm)
<b>REPEAT:</b>	25¼" (64,1 cm)
<b>BACKING:</b>	Paper
<b>FLAME RATING:</b>	ASTM E84 Class A
<b>BOLT SIZE:</b>	8 yd (7,32 m)
<b>MATCH:</b>	Straight
<b>MINIMUM ORDER:</b>	8 yd (7,32 m)
<b>MAINTENANCE:</b>	Soft Dry Brush

MORE COLORS



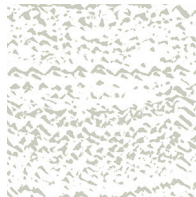
LX1535  
Oatmeal



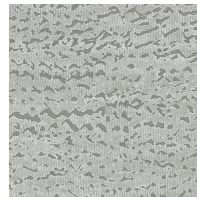
LX1536  
Taupe



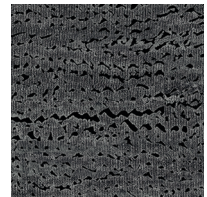
LX1537  
Terracotta



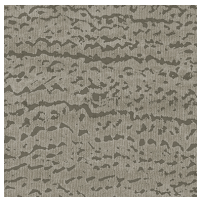
LX1538  
Pebble



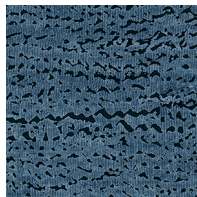
LX1539  
Ash



LX1540  
Charcoal



LX1541  
Dove



LX1542  
Steel Blue

TO THE TRADE

US MARKETS

Exclusively through Holly Hunt

[hollyhunt.com](http://hollyhunt.com)

INTERNATIONAL MARKETS

800.220.6730

[carlisleco.com](http://carlisleco.com)