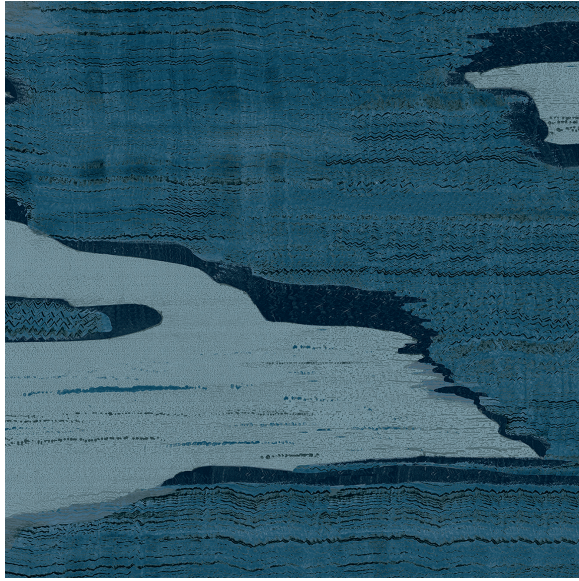




CARLISLE & CO.®

WALLCOVERINGS

— EST. 1998 —



DIGITAL
NAGANO

LX1529 STEEL BLUE

INSTALLED MURAL SIZE: 67" Wide x 134.4" High
(170,18 cm x 341,38 cm)
Trim to your wall height

PANEL WIDTH: 36" (91,4 cm) Untrimmed
Trims to 33½" (85 cm)

BACKING: Paper

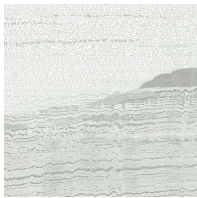
FLAME RATING: ASTM E84 Class A

MATCH: Straight

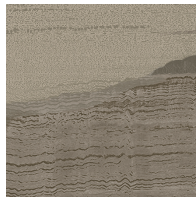
MINIMUM ORDER: 1 Mural (2 panels)

MAINTENANCE: Soft Dry Brush

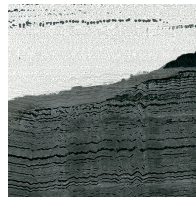
MORE COLORS



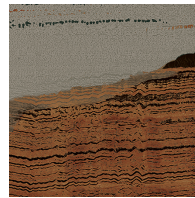
LX1525
Pebble



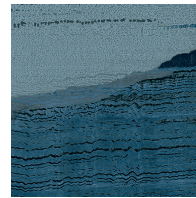
LX1526
Taupe



LX1527
Charcoal



LX1528
Terracotta



LX1529
Steel Blue

TO THE TRADE

US MARKETS

Exclusively through Holly Hunt

hollyhunt.com

INTERNATIONAL MARKETS

800.220.6730

carlisleco.com