



CARLISLE & CO.[®]

WALLCOVERINGS

— EST. 1998 —



NATURALS

SHIMMERING MICA

LX1512 WICKER

| | |
|-----------------------|--|
| WIDTH: | 36" (91,4 cm) Untrimmed Trims to 33½" (85 cm) |
| REPEAT: | None |
| BACKING: | Non-Woven |
| FLAME RATING: | ASTM E84 Class A |
| BOLT SIZE: | 8 yd (7,32 m) |
| MATCH: | Random |
| MINIMUM ORDER: | 8 yd (7,32 m) |
| MAINTENANCE: | Soft Dry Brush |

MORE COLORS



LX1510
Platinum



LX1511
Champagne



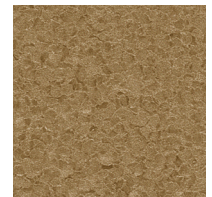
LX1512
Wicker



LX1513
Neutral



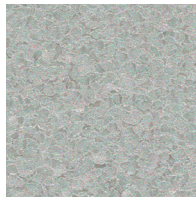
LX1514
Taupe



LX1515
Terracotta



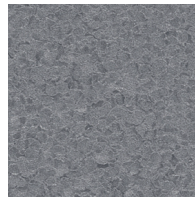
LX1516
Pebble



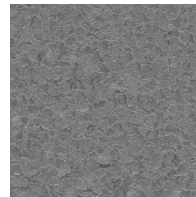
LX1517
Fog



LX1518
Soft Silver



LX1519
Charcoal



LX1520
Dove



LX1521
Twilight

TO THE TRADE

US MARKETS

Exclusively through Holly Hunt

hollyhunt.com

INTERNATIONAL MARKETS

800.220.6730

carlisleco.com