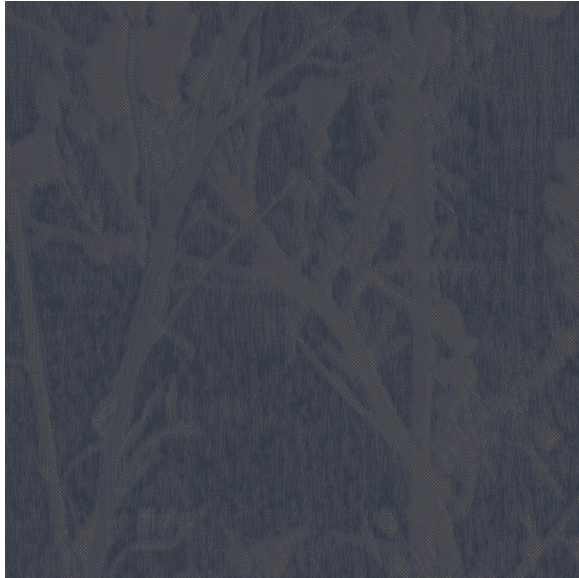




CARLISLE & CO.<sup>®</sup>

WALLCOVERINGS

— EST. 1998 —



HIGH PERFORMANCE VINYL  
ASPEN

LX1504 TWILIGHT

WIDTH:	54" (137,1 cm) Untrimmed Trims to 52" (132,08 cm)
REPEAT:	33" (83,82 cm)
BACKING:	Osnaburg
FLAME RATING:	ASTM E84 Class A
WEIGHT:	24 oz. Type II Vinyl
MATCH:	Straight/Non-Reversible
MAINTENANCE:	Scrubable/Washable

MORE COLORS



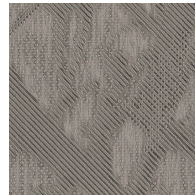
LX1500  
Porcelain



LX1501  
Ash



LX1502  
Oatmeal



LX1503  
Dove



LX1504  
Twilight



LX1505  
Onyx

TO THE TRADE

US MARKETS

Exclusively through Holly Hunt

[hollyhunt.com](http://hollyhunt.com)

INTERNATIONAL MARKETS

800.220.6730

[carlisleco.com](http://carlisleco.com)