



CARLISLE & CO.[®]

WALLCOVERINGS

— EST. 1998 —



HIGH PERFORMANCE VINYL
ASPEN

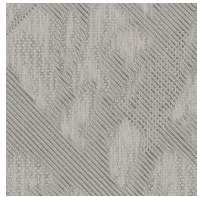
LX1500 PORCELAIN

WIDTH:	54" (137,1 cm) Untrimmed Trims to 52" (132,08 cm)
REPEAT:	33" (83,82 cm)
BACKING:	Osnaburg
FLAME RATING:	ASTM E84 Class A
WEIGHT:	24 oz. Type II Vinyl
MATCH:	Straight/Non-Reversible
MAINTENANCE:	Scrubable/Washable

MORE COLORS



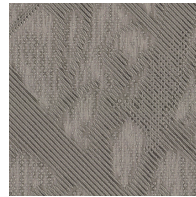
LX1500
Porcelain



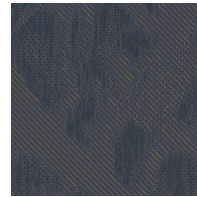
LX1501
Ash



LX1502
Oatmeal



LX1503
Dove



LX1504
Twilight



LX1505
Onyx

TO THE TRADE

US MARKETS

Exclusively through Holly Hunt

hollyhunt.com

INTERNATIONAL MARKETS

800.220.6730

carlisleco.com