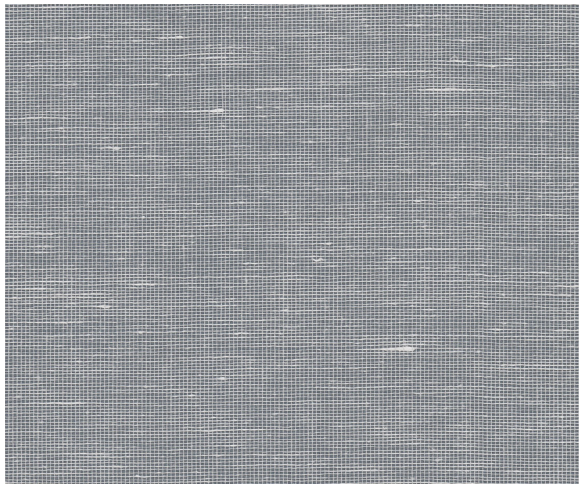


NATURALS

BIJOU

This light cotton and hemp weave creates an organic and natural elegance for classic living. Undyed threads with natural slubs add dimensional interest.

LX1372 SKY



SPECIFICATIONS

WIDTH:	36" (91,44 cm) Trimmed
REPEAT:	None
MATCH:	Random
BACKING:	Non-Woven
CONTENT:	45% Thread, 55% Hemp Yarn
FLAME RATING:	ASTM E84 Class A
MAINTENANCE:	Soft Dry Brush
BOLT SIZE:	8 yd (7,32 m)

ADDITIONAL INFORMATION

Unique hanging instructions accompany all products. Hiring a professional installer for these specialty products is recommended.

Color and texture may vary slightly due to the organic quality of the substrate material. These subtle differences should be celebrated as the mark of being hand-made.

ORDERING:

PRICING:	Priced by the linear yard.
MINIMUM ORDER:	8 yd (7,32 m)
ORDER INCREMENT:	8 yd (7,32 m)
STOCK:	USA
Memos available upon request.	

MORE COLORS



LX1365 Wicker



LX1366 Oyster



LX1367 Taupe



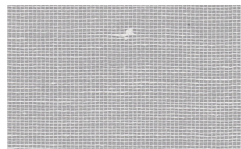
LX1368 Ash



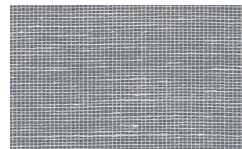
LX1369 Terracotta



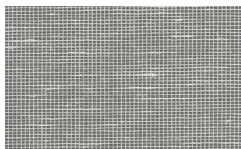
LX1370 Hazelnut



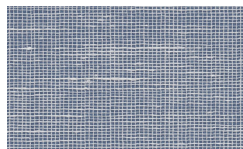
LX1371 Fog



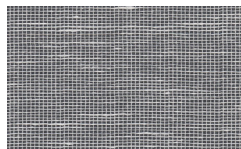
LX1372 Sky



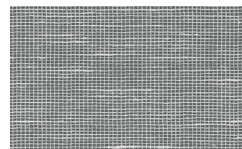
LX1373 Anchor



LX1374 Twilight



LX1375 Onyx



LX1376 Steel Blue

TO THE TRADE

US MARKETS

Exclusively through Holly Hunt
hollyhunt.com

CANADA MARKETS

Crown Surface Solutions
crownsurfacesolutions.com

INTERNATIONAL MARKETS

800.220.6730
carlisleco.com