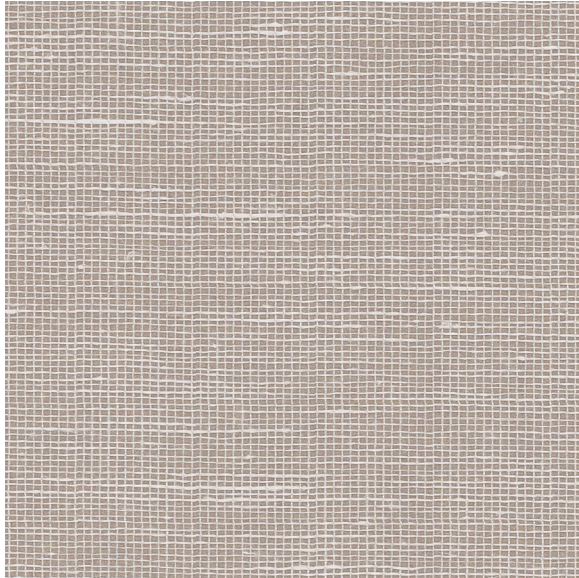




CARLISLE & CO.

WALLCOVERINGS

— EST. 1998 —

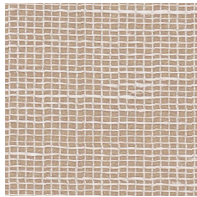


NATURALS BIJOU

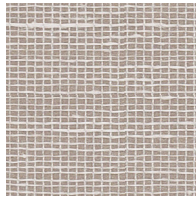
LX1366 OYSTER

| | |
|----------------|-----------------------|
| WIDTH: | 36" (91,4 cm) Trimmed |
| REPEAT: | None |
| BACKING: | Non-Woven |
| FLAME RATING: | ASTM E84 Class A |
| BOLT SIZE: | 8 yd (7,32 m) |
| MATCH: | Random |
| MINIMUM ORDER: | 8 yd (7,32 m) |
| MAINTENANCE: | Soft Dry Brush |

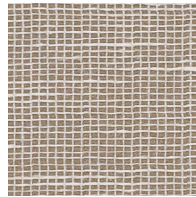
MORE COLORS



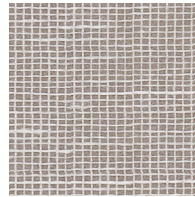
LX1365
Wicker



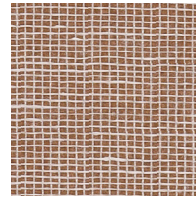
LX1366
Oyster



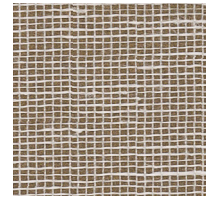
LX1367
Taupe



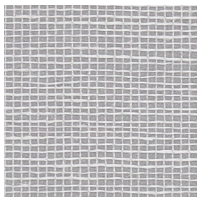
LX1368
Ash



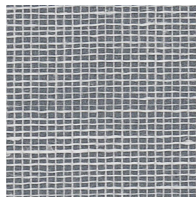
LX1369
Terracotta



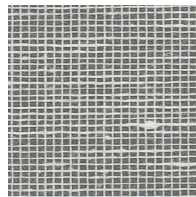
LX1370
Hazelnut



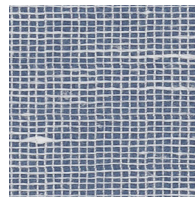
LX1371
Fog



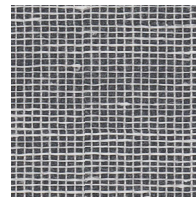
LX1372
Sky



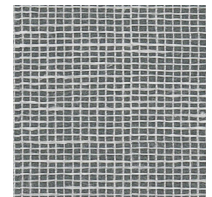
LX1373
Anchor



LX1374
Twilight



LX1375
Onyx



LX1376
Steel Blue

TO THE TRADE

US MARKETS

Exclusively through Holly Hunt

hollyhunt.com

INTERNATIONAL MARKETS

800.220.6730

carlisleco.com