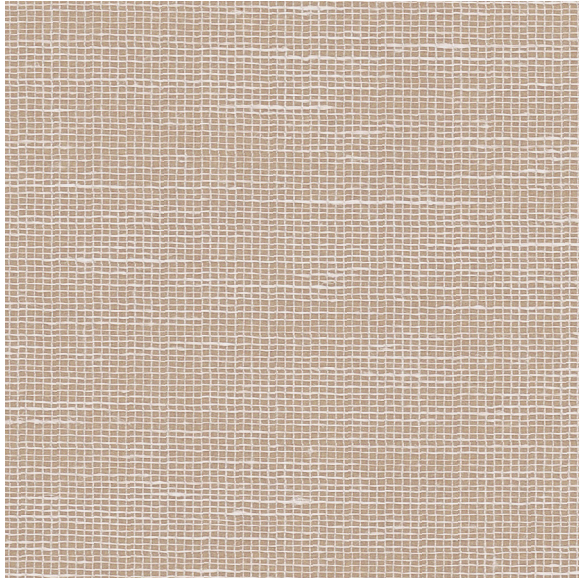




# CARLISLE & CO.

WALLCOVERINGS

— EST. 1998 —

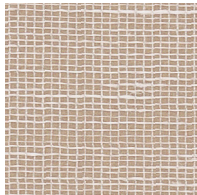


## NATURALS BIJOU

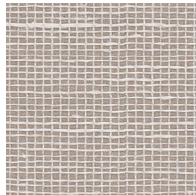
### LX1365 WICKER

WIDTH:	36" (91,4 cm) Trimmed
REPEAT:	None
BACKING:	Non-Woven
FLAME RATING:	ASTM E84 Class A
BOLT SIZE:	8 yd (7,32 m)
MATCH:	Random
MINIMUM ORDER:	8 yd (7,32 m)
MAINTENANCE:	Soft Dry Brush

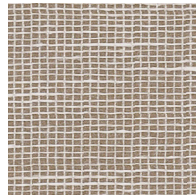
### MORE COLORS



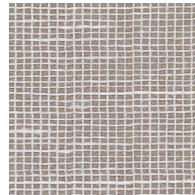
LX1365  
Wicker



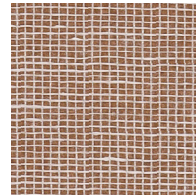
LX1366  
Oyster



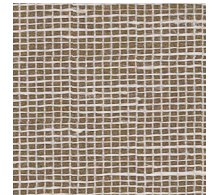
LX1367  
Taupe



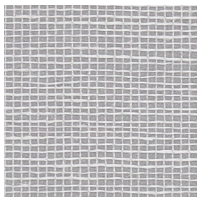
LX1368  
Ash



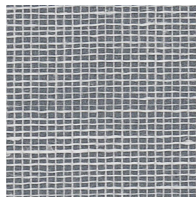
LX1369  
Terracotta



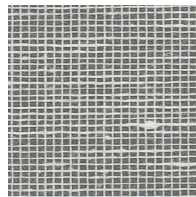
LX1370  
Hazelnut



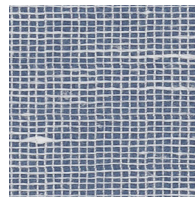
LX1371  
Fog



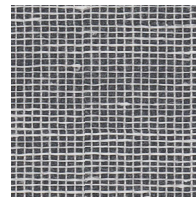
LX1372  
Sky



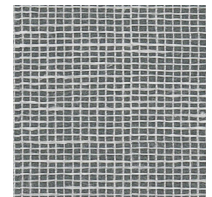
LX1373  
Anchor



LX1374  
Twilight



LX1375  
Onyx



LX1376  
Steel Blue

### TO THE TRADE

#### US MARKETS

Exclusively through Holly Hunt

[hollyhunt.com](http://hollyhunt.com)

#### INTERNATIONAL MARKETS

800.220.6730

[carlisleco.com](http://carlisleco.com)