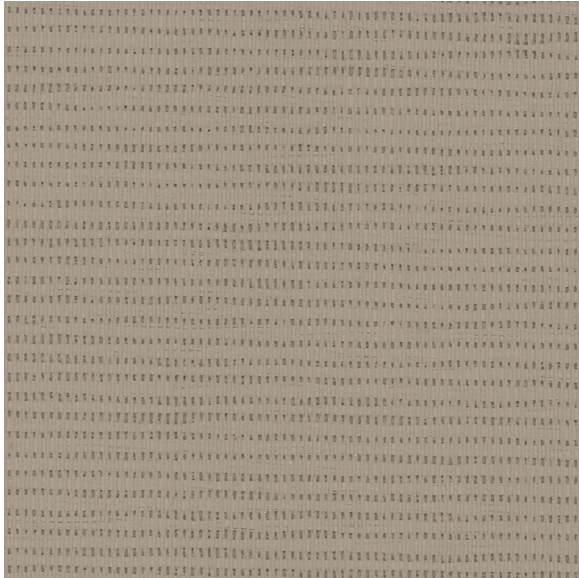




CARLISLE & CO.™

WALLCOVERINGS

— EST. 1998 —



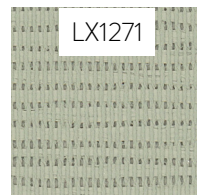
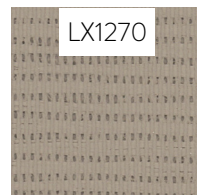
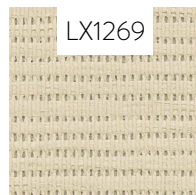
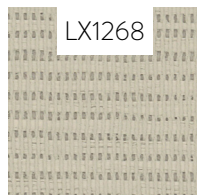
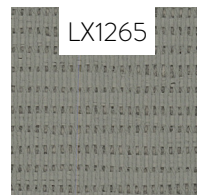
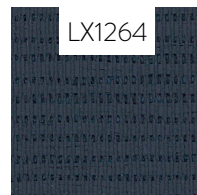
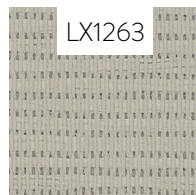
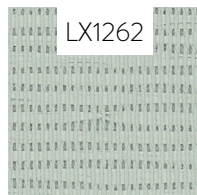
TEXTILES

PANORAMA

LX1270 DRIFTWOOD

WIDTH:	27" (68,5 cm) Trimmed
REPEAT:	None
BACKING:	Non-Woven
FLAME RATING:	ASTM E84 Class A
BOLT SIZE:	9 yd (8,23 m)
MATCH:	Random
MINIMUM ORDER:	9 yd (8,23 m)
MAINTENANCE:	Soft Dry Brush

MORE COLORS



TO THE TRADE

US MARKETS

Exclusively through Holly Hunt

hollyhunt.com

INTERNATIONAL MARKETS

800.220.6730

carlisleco.com