



CARLISLE & CO.

WALLCOVERINGS

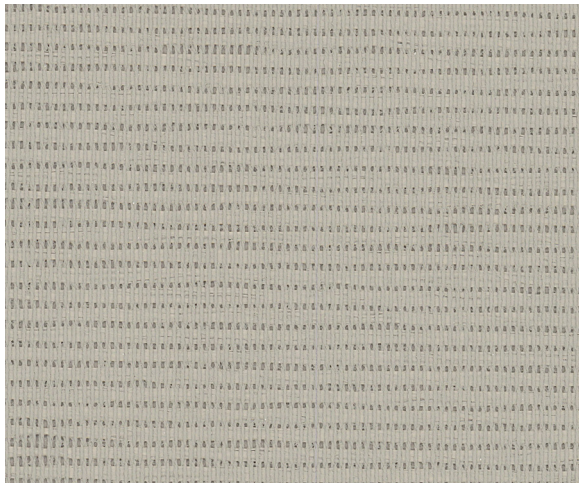
— EST. 1998 —

TEXTILES

PANORAMA

Wrap your walls in a classic color palette of textile sisals, handcrafted by artisans. The matte finish and tight texture of the weave makes this pattern a core resource within any design library.

LX1263 DOVE



SPECIFICATIONS

WIDTH:	27" (68,58 cm) Trimmed
REPEAT:	None
MATCH:	Random
BACKING:	Non-Woven
COMPOSITION:	Textile Sisal on Non-Woven Backing
FLAME RATING:	ASTM E84 Class A
MAINTENANCE:	Soft Dry Brush
BOLT SIZE:	9 yd (8,23 m)

ADDITIONAL INFORMATION

Unique hanging instructions accompany all products. Hiring a professional installer for these specialty products is recommended.

Color and texture may vary slightly due to the organic quality of the substrate material. These subtle differences should be celebrated as the mark of being hand-made.

ORDERING:

PRICING:	Priced by the linear yard.
MINIMUM ORDER:	9 yd (8,23 m)
ORDER INCREMENT:	9 yd (8,23 m)
STOCK:	USA

Memos available upon request.

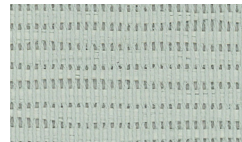
MORE COLORS



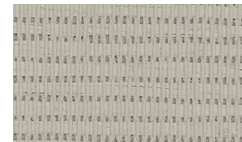
LX1260 Porcelain



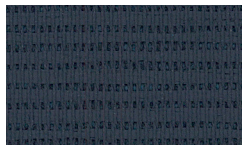
LX1261 Fog



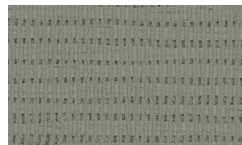
LX1262 Juniper



LX1263 Dove



LX1264 Twilight



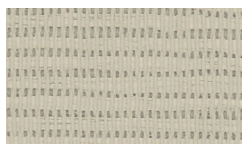
LX1265 Anchor



LX1266 Pebble



LX1267 Wicker



LX1268 Taupe



LX1269 Oatmeal



LX1270 Driftwood



LX1271 Mint Julep

TO THE TRADE

US MARKETS

Exclusively through Holly Hunt
hollyhunt.com

CANADA MARKETS

Crown Surface Solutions
crownsurfacesolutions.com

INTERNATIONAL MARKETS

800.220.6730
carlisleco.com