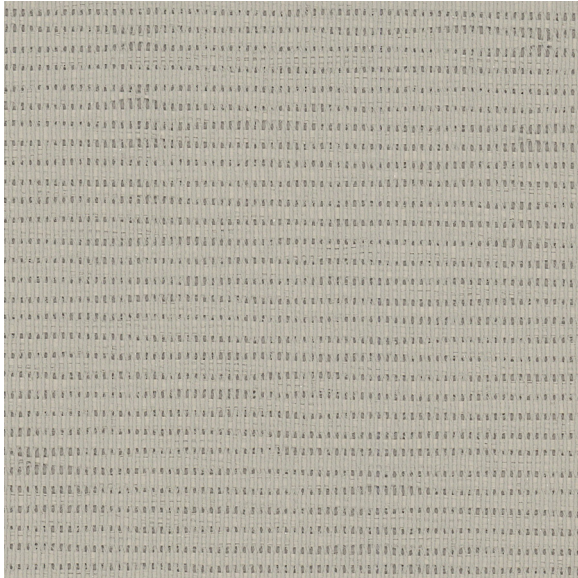




# CARLISLE & CO.™

## WALLCOVERINGS

— EST. 1998 —



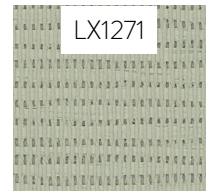
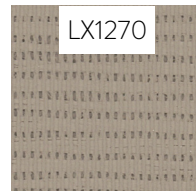
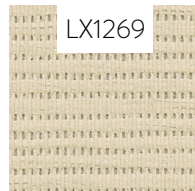
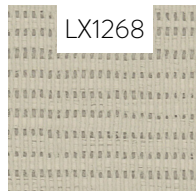
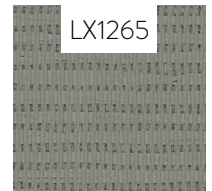
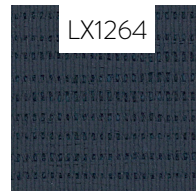
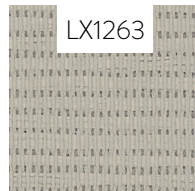
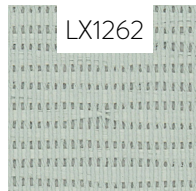
### TEXTILES

# PANORAMA

## LX1263 DOVE

<b>WIDTH:</b>	27" (68,5 cm) Trimmed
<b>REPEAT:</b>	None
<b>BACKING:</b>	Non-Woven
<b>FLAME RATING:</b>	ASTM E84 Class A
<b>BOLT SIZE:</b>	9 yd (8,23 m)
<b>MATCH:</b>	Random
<b>MINIMUM ORDER:</b>	9 yd (8,23 m)
<b>MAINTENANCE:</b>	Soft Dry Brush

### MORE COLORS



### TO THE TRADE

#### US MARKETS

Exclusively through Holly Hunt

[hollyhunt.com](http://hollyhunt.com)

#### INTERNATIONAL MARKETS

800.220.6730

[carlisleco.com](http://carlisleco.com)