



# CARLISLE & CO.™

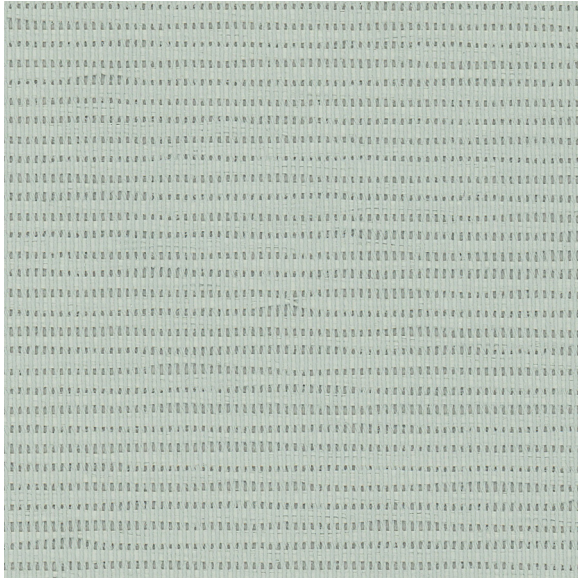
WALLCOVERINGS

— EST. 1998 —

## TEXTILES

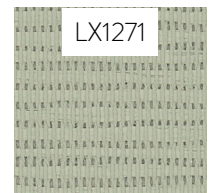
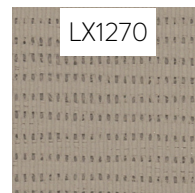
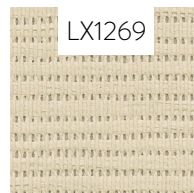
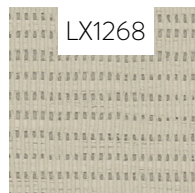
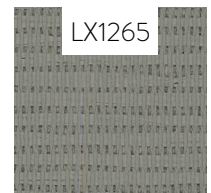
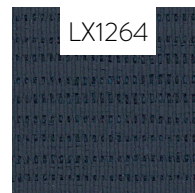
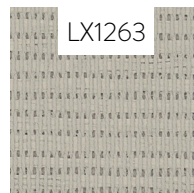
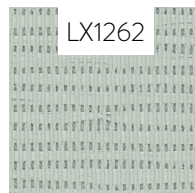
# PANORAMA

## LX1262 JUNIPER



<b>WIDTH:</b>	27" (68,5 cm) Trimmed
<b>REPEAT:</b>	None
<b>BACKING:</b>	Non-Woven
<b>FLAME RATING:</b>	ASTM E84 Class A
<b>BOLT SIZE:</b>	9 yd (8,23 m)
<b>MATCH:</b>	Random
<b>MINIMUM ORDER:</b>	9 yd (8,23 m)
<b>MAINTENANCE:</b>	Soft Dry Brush

## MORE COLORS



## TO THE TRADE

### US MARKETS

Exclusively through Holly Hunt

[hollyhunt.com](http://hollyhunt.com)

### INTERNATIONAL MARKETS

800.220.6730

[carlisleco.com](http://carlisleco.com)