



CARLISLE & CO.™

WALLCOVERINGS

— EST. 1998 —



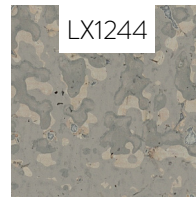
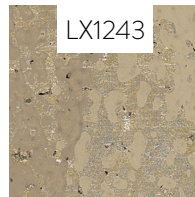
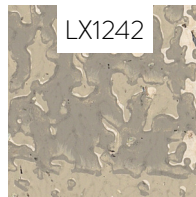
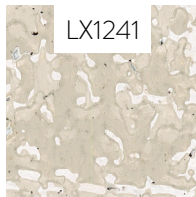
SIGNATURE PRINTS

UNCORKED

LX1244 DOVE

**WIDTH:** 27" (68,5 cm) Trimmed  
**REPEAT:** 25¼" (64,14 cm)  
**BACKING:** Non-Woven  
**FLAME RATING:** ASTM E84 Class A  
**BOLT SIZE:** 9 yd (8,23 m)  
**MATCH:** Straight  
**MINIMUM ORDER:** 9 yd (8,23 m)  
**MAINTENANCE:** Wipe Clean

MORE COLORS



TO THE TRADE

US MARKETS

Exclusively through Holly Hunt

[hollyhunt.com](http://hollyhunt.com)

INTERNATIONAL MARKETS

800.220.6730

[carlisleco.com](http://carlisleco.com)