



CARLISLE & CO.™

WALLCOVERINGS

— EST. 1998 —



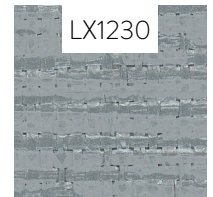
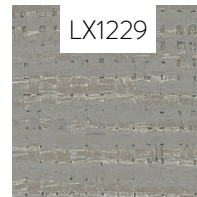
HANDCRAFTED

FREEHAND

LX1236 CHAMPAGNE

WIDTH: 27" (68,5 cm) Trimmed  
 REPEAT: 20 ½" (52,07 cm)  
 BACKING: Non-Woven  
 FLAME RATING: ASTM E84 Class B  
 BOLT SIZE: 9 yd (8,2 m)  
 MATCH: Straight  
 MINIMUM ORDER: 9 yd (8,2 m)  
 MAINTENANCE: Wipe Clean

MORE COLORS



TO THE TRADE

US MARKETS

Exclusively through Holly Hunt

[hollyhunt.com](http://hollyhunt.com)

INTERNATIONAL MARKETS

800.220.6730

[carlisleco.com](http://carlisleco.com)