



CARLISLE & CO.™

WALLCOVERINGS

— EST. 1998 —



HANDCRAFTED

FREEHAND

LX1233 TAUPE

| | |
|----------------|-----------------------|
| WIDTH: | 27" (68,5 cm) Trimmed |
| REPEAT: | 20 ½" (52,07 cm) |
| BACKING: | Non-Woven |
| FLAME RATING: | ASTM E84 Class B |
| BOLT SIZE: | 9 yd (8,2 m) |
| MATCH: | Straight |
| MINIMUM ORDER: | 9 yd (8,2 m) |
| MAINTENANCE: | Wipe Clean |

MORE COLORS



LX1225



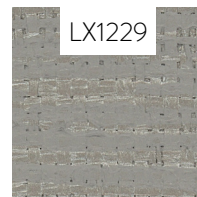
LX1226



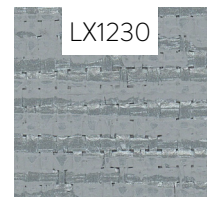
LX1227



LX1228



LX1229



LX1230



LX1231



LX1232



LX1233



LX1234



LX1235



LX1236

TO THE TRADE

US MARKETS

Exclusively through Holly Hunt

hollyhunt.com

INTERNATIONAL MARKETS

800.220.6730

carlisleco.com