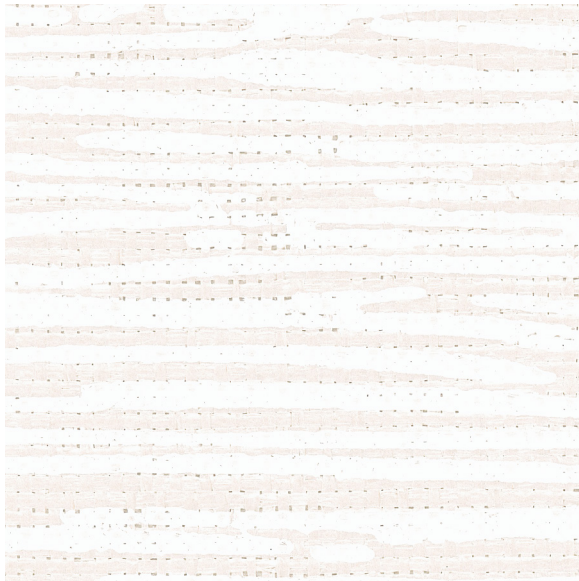




CARLISLE & CO.™

WALLCOVERINGS

— EST. 1998 —



HANDCRAFTED

FREEHAND

LX1226 PORCELAIN

WIDTH:	27" (68,5 cm) Trimmed
REPEAT:	20 ½" (52,07 cm)
BACKING:	Non-Woven
FLAME RATING:	ASTM E84 Class B
BOLT SIZE:	9 yd (8,2 m)
MATCH:	Straight
MINIMUM ORDER:	9 yd (8,2 m)
MAINTENANCE:	Wipe Clean

MORE COLORS



LX1225



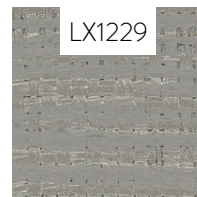
LX1226



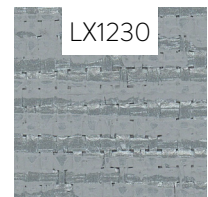
LX1227



LX1228



LX1229



LX1230



LX1231



LX1232



LX1233



LX1234



LX1235



LX1236

TO THE TRADE

US MARKETS

Exclusively through Holly Hunt

hollyhunt.com

INTERNATIONAL MARKETS

800.220.6730

carlisleco.com