



CARLISLE & CO.™

WALLCOVERINGS

— EST. 1998 —



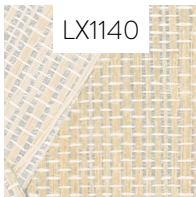
NATURALS

TERRACE

LX1143 ONYX

WIDTH:	36" (91,4 cm) Trimmed
REPEAT:	7" (17,7 cm)
BACKING:	Non-Woven
FLAME RATING:	ASTM E84 Class B
BOLT SIZE:	8 yd (7,32 m)
MATCH:	Straight
MINIMUM ORDER:	8 yd (7,32 m)
MAINTENANCE:	Soft Dry Brush

MORE COLORS



LX1140



LX1141



LX1142



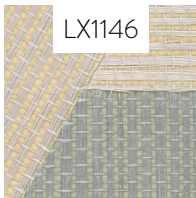
LX1143



LX1144



LX1145



LX1146



LX1147

TO THE TRADE

US MARKETS

Exclusively through Holly Hunt

hollyhunt.com

INTERNATIONAL MARKETS

800.220.6730

carlisleco.com