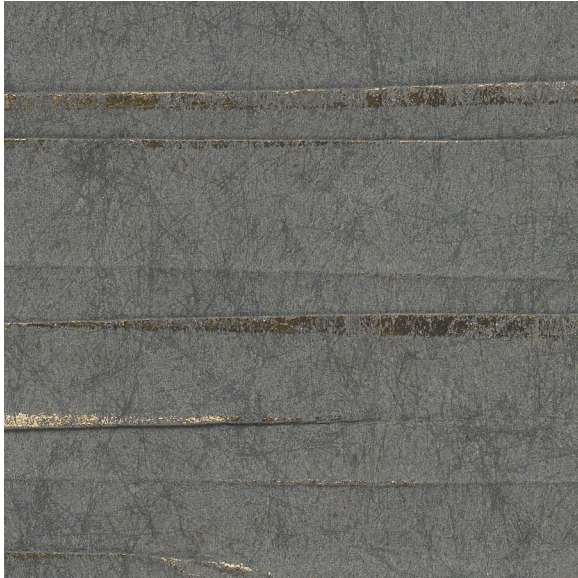




# CARLISLE & CO.™

WALLCOVERINGS

— EST. 1998 —

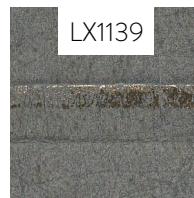
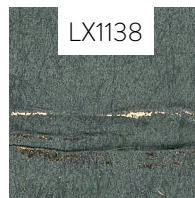
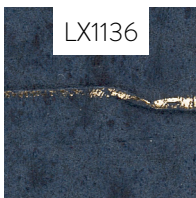
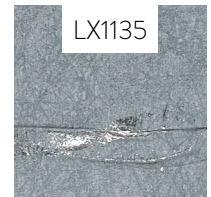
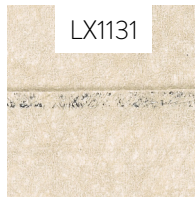


## HANDCRAFTED FUSION

### LX1139 ANCHOR

WIDTH:	36" (91,4 cm) Trimmed
REPEAT:	None
BACKING:	Non-Woven
FLAME RATING:	ASTM E84 Class B
BOLT SIZE:	8 yd (7,32 m)
MATCH:	Random
MINIMUM ORDER:	8 yd (7,32 m)
MAINTENANCE:	Soft Dry Brush

### MORE COLORS



### TO THE TRADE

#### US MARKETS

Exclusively through Holly Hunt

[hollyhunt.com](http://hollyhunt.com)

#### INTERNATIONAL MARKETS

800.220.6730

[carlisleco.com](http://carlisleco.com)