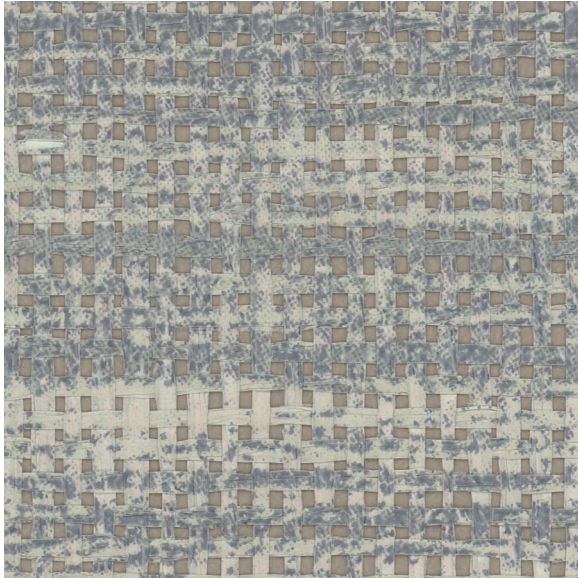




CARLISLE & CO.™

WALLCOVERINGS

— EST. 1998 —



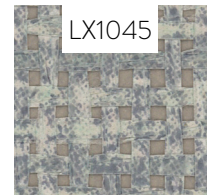
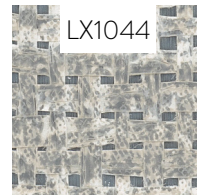
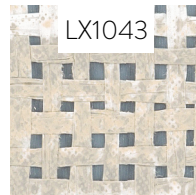
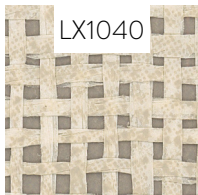
NATURALS

LATITUDE

LX1045 STONE

| | |
|----------------|-----------------------|
| WIDTH: | 36" (91,4 cm) Trimmed |
| REPEAT: | None |
| BACKING: | Non-Woven |
| FLAME RATING: | ASTM E84 Class A |
| BOLT SIZE: | 8 yd (7,32 m) |
| MATCH: | Random |
| MINIMUM ORDER: | 8 yd (7,32 m) |
| MAINTENANCE: | Soft Dry Brush |

MORE COLORS



TO THE TRADE

US MARKETS

Exclusively through Holly Hunt

hollyhunt.com

INTERNATIONAL MARKETS

800.220.6730

carlisleco.com