



# CARLISLE & CO.™

WALLCOVERINGS

— EST. 1998 —



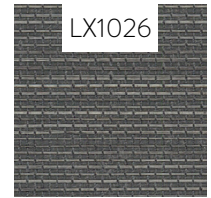
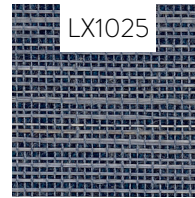
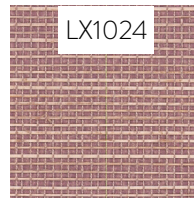
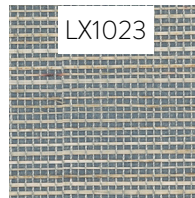
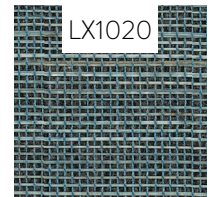
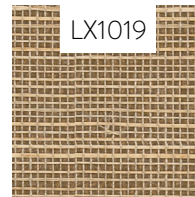
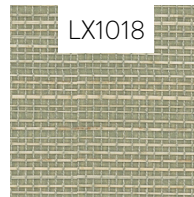
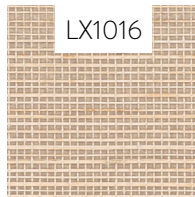
NATURALS

## ABACA HORIZON

LX1015 SANDSTONE

- WIDTH: 36" (91,4 cm) Trimmed
- REPEAT: None
- BACKING: Non-Woven
- FLAME RATING: ASTM E84 Class B
- BOLT SIZE: 8 yd (7,32 m)
- MATCH: Random
- MINIMUM ORDER: 8 yd (7,32 m)
- MAINTENANCE: Soft Dry Brush

### MORE COLORS



### TO THE TRADE

#### US MARKETS

Exclusively through Holly Hunt

[hollyhunt.com](http://hollyhunt.com)

#### INTERNATIONAL MARKETS

800.220.6730

[carlisleco.com](http://carlisleco.com)