



safire

VIDEO INTERCOM  
2nd Generation

# Video-Intercom System



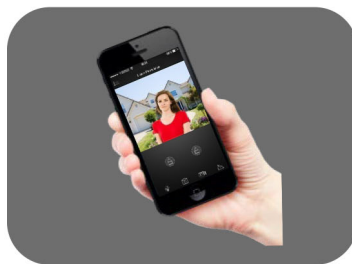
Safire 2<sup>nd</sup> generation of Video-Intercom: a solution to have perfect harmony between design and innovation, with the highest efficiency in the market.

# Video-Intercom System



## Modularity

- ✓ Flexible Solution
- ✓ Board with different configurations
- ✓ Plug&Play modules



## Convergence

- ✓ CCTV and Access Control
- ✓ Management from the same APP
- ✓ Safire Connect



## Efficiency

- ✓ 180° fisheye image with night vision
- ✓ Monitor IPS Full Color
- ✓ Micro SD card



## Flexibility

- ✓ Solution for homes
- ✓ Solution for buildings
- ✓ Embedded or surface mounted



## Easy to use

- ✓ Standard PoE
- ✓ Assisted configuration
- ✓ Easy and intuitive interface

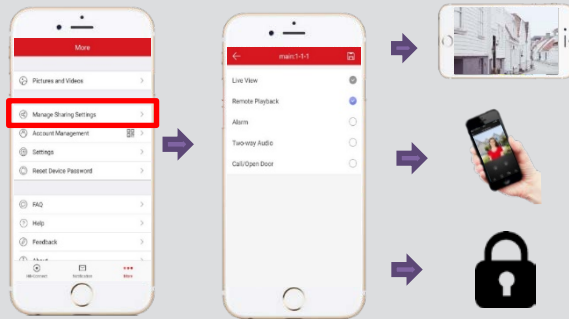


reddot award 2017  
winner

## Design

- ✓ Elegant and functional
- ✓ Aviation Aluminum
- ✓ 2017 RedDot prize winner

## Safire Connect APP



## Excellent Image



180° Horizontal Vision

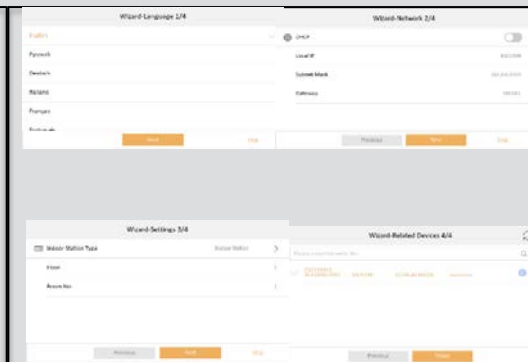


96° Vertical Vision



2MP Fisheye Camera

## 4 steps Easy Installation



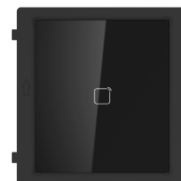
# Modular Exterior Boards



Main module



Keypad module



Card-reader module



6-button module



Display module



Indicator module



Filler module

2<sup>nd</sup> generation IP and 2-wire video-intercom modular boards are characterized by versatility and flexibility in order to create solution in different scenarios, from a home to a 500-apartment building.

# Single Family Solution



**7" IP Monitor**  
LCD Touch screen  
Standard PoE connection  
Log with lost calls



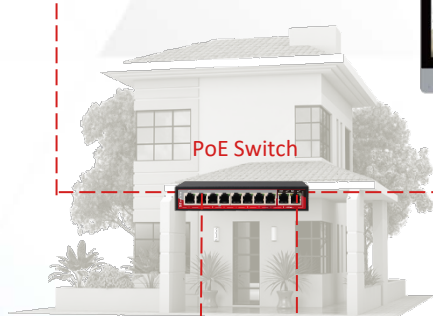
**7" IP Monitor**  
LCD IPS Touch Screen  
Standard PoE connection  
Log with lost calls  
Innovative Prized Design



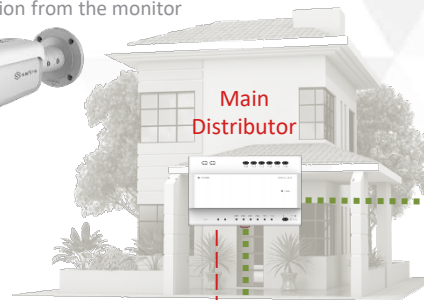
**IP Camera**  
Visualization from the monitor



**7" 2-wire Monitor**  
LCD Touch Screen  
2-wire power supply  
Log with lost calls



**PoE Switch**



**Main Distributor**



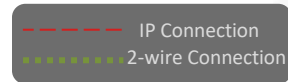
**INTERNET**



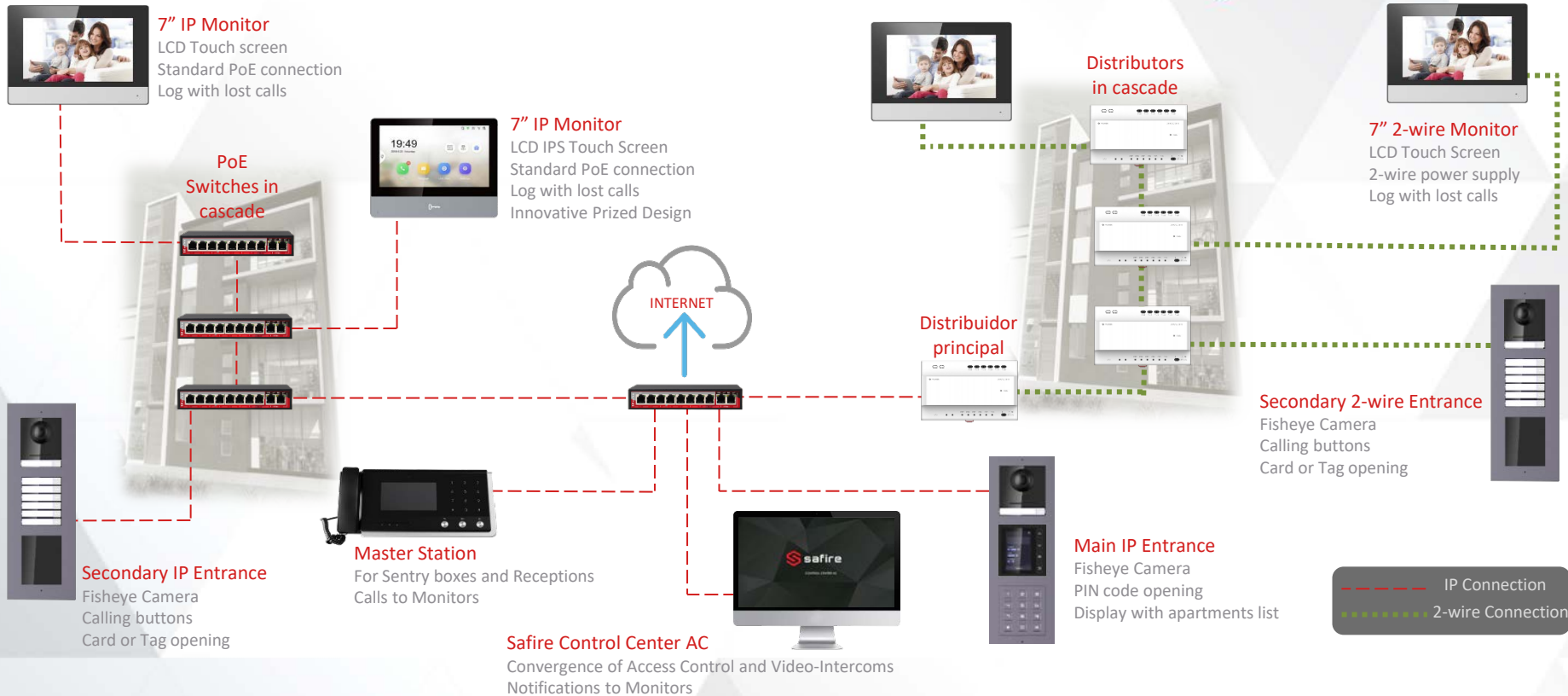
**IP Main Entrance**  
Fisheye camera  
PoE Standard  
One-touch call



**2-wire Main Entrance**  
Fisheye camera  
Card access  
One-touch call



# Building Solution



IP Solution

2-wire Solution

# Product Lines



## SF-VIMOD-CAM-IP-BF

- ✓ SF-VIMOD-CAM-IP
- ✓ Embedded mounting bracket



## SF-VIMOD-CAM-IP-BS

- ✓ SF-VIMOD-CAM-IP
- ✓ Surface mounting bracket



## SF-VIMOD-CAM-IP

- ✓ 2 Mpx IP65 Camera
- ✓ Backlit button
- ✓ Standard PoE



## SF-VIMOD-CAM-2

- ✓ 2 Mpx IP65 Camera
- ✓ Backlit button
- ✓ 2-wire connection



## SF-VIMOD-KEY6

- ✓ 6 backlit buttons
- ✓ Labels personalization



## SF-VIMOD-KPAD

- ✓ Calls to residents
- ✓ PIN unlocking code
- ✓ IP65



## SF-VIMOD-BLANK

- ✓ Filler Module
- ✓ IP65



## SF-VIMOD-DIS

- ✓ List of Residents
- ✓ Door Status
- ✓ IP65



## SF-VIMOD-CARD-EM(/MF\*)

- ✓ Card Unlocking module
- ✓ 125KHz MHz / 13,56 MHz Mifare\*
- ✓ IP65



## SF-VIMOD-IND

- ✓ Call Status
- ✓ Door Status
- ✓ IP65



# Product Lines



## SF-VIDISP01-7WIP

- ✓ 7" TFT LCD
- ✓ Alarm Inputs
- ✓ PoE & WiFi Standards
- ✓ Micro SD card
- ✓ Safire Connect



## SF-VIDISP02-7WIP

- ✓ 7" IPS LCD
- ✓ Easy opening button
- ✓ Alarm Inputs
- ✓ PoE & WiFi Standards
- ✓ Micro SD card
- ✓ Safire Connect



## SF-VIDISP01-7IP

- ✓ 7" TFT LCD
- ✓ Alarm Inputs
- ✓ PoE Standard
- ✓ Micro SD card
- ✓ Safire Connect



## SF-VIDISP01-10WIP

- ✓ 10" TFT LCD
- ✓ Alarm Inputs
- ✓ PoE & WiFi Standards
- ✓ Micro SD card
- ✓ Safire Connect



## SF-VIDISP01-7W2

- ✓ 7" TFT LCD
- ✓ Alarm Inputs
- ✓ 2-wire & WiFi
- ✓ Micro SD card
- ✓ Safire Connect



## SF-VI209M-IP

- ✓ 7" TFT LCD
- ✓ 0.3Mpx camera
- ✓ Alarm Inputs
- ✓ Master Monitor
- ✓ Micro SD card

# Product Lines



**SF-VIMOD-BS3**

- ✓ Modular Bracket
- ✓ Up to 3 modules
- ✓ Surface mounting



**SF-VIMOD-BS2**

- ✓ Modular Bracket
- ✓ Up to 2 modules
- ✓ Surface mounting



**SF-VIMOD-BS1**

- ✓ Modular Bracket
- ✓ Up to 1 module
- ✓ Surface mounting



**SF-VIMOD-BF1**

- ✓ Modular Bracket
- ✓ Up to 1 module
- ✓ Embedded mounting



**SF-VIMOD-BF2**

- ✓ Modular Bracket
- ✓ Up to 2 modules
- ✓ Embedded mounting



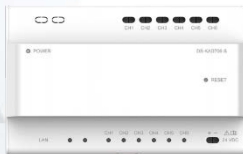
**SF-VIMOD-BF3**

- ✓ Modular Bracket
- ✓ Up to 3 modules
- ✓ Embedded mounting



**SF-VIB6320**

- ✓ Desktop bracket
- ✓ Compatible with Monitors SF-VIDISP01



**SF-VIMOD-HUB-2**

- ✓ 2-wire to IP converter
- ✓ Up to 6 Hubs "M2" in cascade
- ✓ Brings net to other Hubs
- ✓ Surface or DIN



**SF-VIMOD-HUB-M2**

- ✓ 2-wire to IP converter
- ✓ Suitable for cascade
- ✓ Power supplies devices
- ✓ Surface or DIN

# Product Lines



## SF-VIK001-S-2

- ✓ SF-VIMOD-CAM-2
- ✓ SF-VIMOD-BS1
- ✓ SF-VIDISP01-7W2
- ✓ MicroSD Card included
- ✓ Hub 2Wire to IP
- ✓ 24V Power Adapter



## SF-VIK001-F-IP

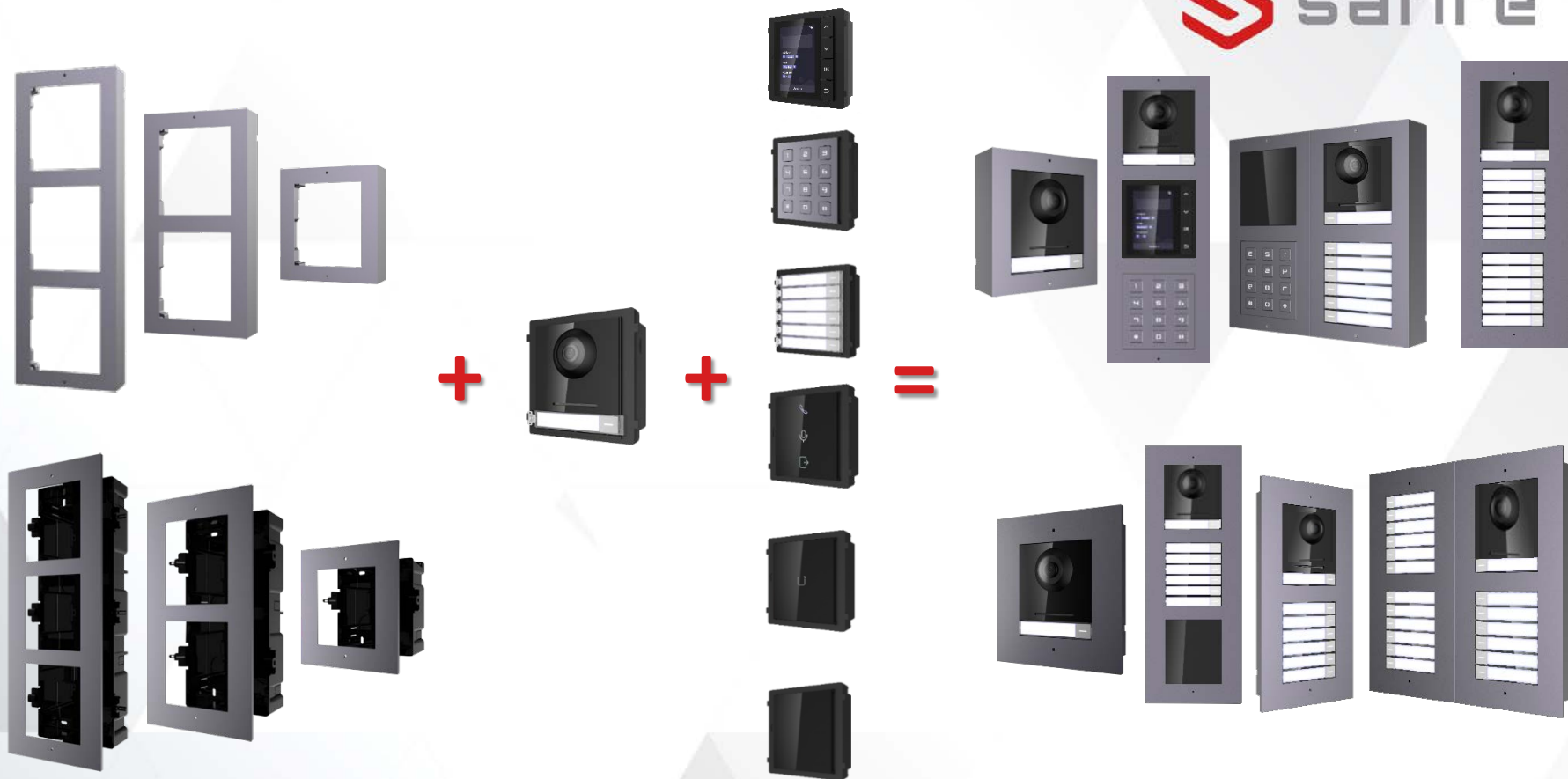
- ✓ SF-VIMOD-CAM-IP-FS
- ✓ SF-VIDISP01-7WIP
- ✓ Micro SD Card included
- ✓ Switch PoE included



## SF-VIK001-S-IP

- ✓ SF-VIMOD-CAM-IP-BS
- ✓ SF-VIDISP01-7WIP
- ✓ MicroSD Card included
- ✓ Switch PoE included

# Versatile and Modular Design



# Transmission Distances



If board and monitor are powered by separate power supply sources

CABLE SPECS	18 AWG	20 AWG	24AWG
Monitors	50 m	30 m	15 m
Main module with 8 submodules	35 m	25 m	8 m

If board and monitor are powered by Standard PoE

CABLE SPECS	CAT 5	CAT 5E	CAT 6
Monitors	100 m	100 m	100 m
Main module with 8 submodules	60 m	80 m	100 m

2-wire Boards and Monitors with Hub

CABLE SPECS	24 AWG (0.2 mm <sup>2</sup> , 9Ω/100 m) Twisted Pair	20 AWG (0.5 mm <sup>2</sup> , 3.5Ω/100 m) Twisted Pair	18 AWG (0.8 mm <sup>2</sup> , 9Ω/100 m) Twisted Pair	16 AWG (1.0 mm <sup>2</sup> , 9Ω/100 m) Twisted Pair	24 AWG (0.2 mm <sup>2</sup> , 9Ω/100 m) Parallel Lines	20 AWG (0.2 mm <sup>2</sup> , 9Ω/100 m) Parallel Lines	18 AWG (0.2 mm <sup>2</sup> , 9Ω/100 m) Parallel Lines	16 AWG (0.2 mm <sup>2</sup> , 9Ω/100 m) Parallel Lines
Between Master and Slave Distributors	≤ 60 m	≤ 60 m	≤ 60 m	≤ 50 m	N/A	≤ 35 m	≤ 35 m	N/A
Between Master Distributors	≤ 60 m	≤ 60 m	≤ 60 m	≤ 50 m	N/A	≤ 35 m	≤ 35 m	N/A
Between Distributor and Board	≤ 35 m	≤ 60 m	≤ 60 m	≤ 50 m	N/A	≤ 35 m	≤ 35 m	N/A
Between Distributor and Monitor	≤ 35 m	≤ 100 m	≤ 100 m	≤ 100 m	≤ 100 m	≤ 100 m	≤ 100 m	≤ 100 m

Maximum 500 apartments | Each board button can call up to 6 monitors | Maximum 9 boards with the same configuration | Maximum 8 modules for each main board



**safire**  
VIDEO INTERCOMS

**ALDeals**

 02081917809

 [info@aldeals.co.uk](mailto:info@aldeals.co.uk)