



FS Performance Engineering

Volkswagen MK6 Golf R (2012-2013) Side Skirt Extensions Installation Instructions

Tools Needed:

- 10mm wrench
- 10mm socket
- Ratchet wrench
- T20/T25 Torx driver
- Drill
- 1/4" drill bit
- Short phillip's head screwdriver
- Helper/friend

Included in Kit:

- (2) Side Skirts, they are symmetrical
- (2) 10mm spacers
- (2) 1-1/8" long body screws
- (8) M6-1.0 x 20mm bolts
- (8) M6 Nyloc Nuts
- (8) 1/4" ID small washers
- (8) 1/4" ID, 1" OD washers

Steps:

1.) Raise car and secure with jack stands.

2.) Starting with either side, identify the three T20 (or T25, we had both) screws located under the rocker panel. Remove the screws and install a skirt extension at these OEM locations. Use the supplied 10mm spacer & body screw at the rear hole. It is easy to figure out the direction of the side skirt extension. SEE ALL PICS.

FRONT SCREW:



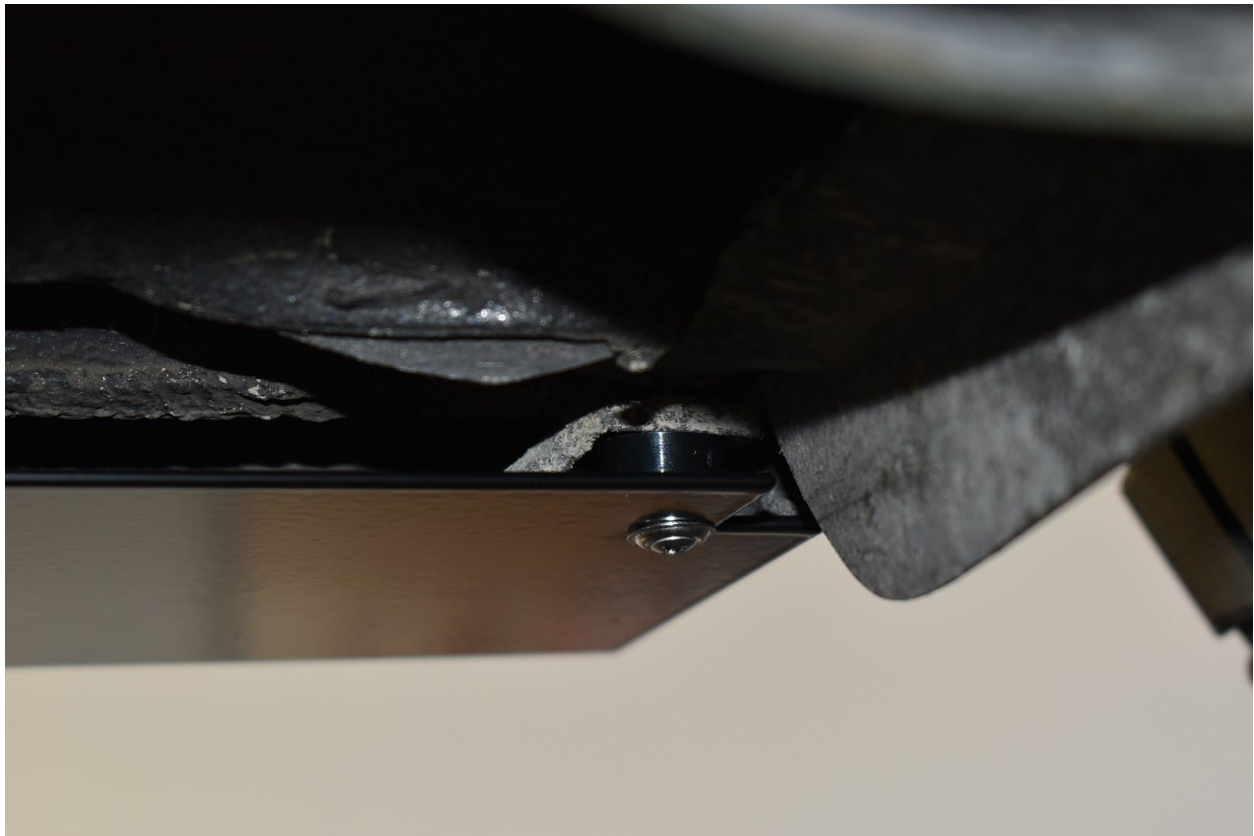
FRONT SCREW AND MIDDLE SCREW:



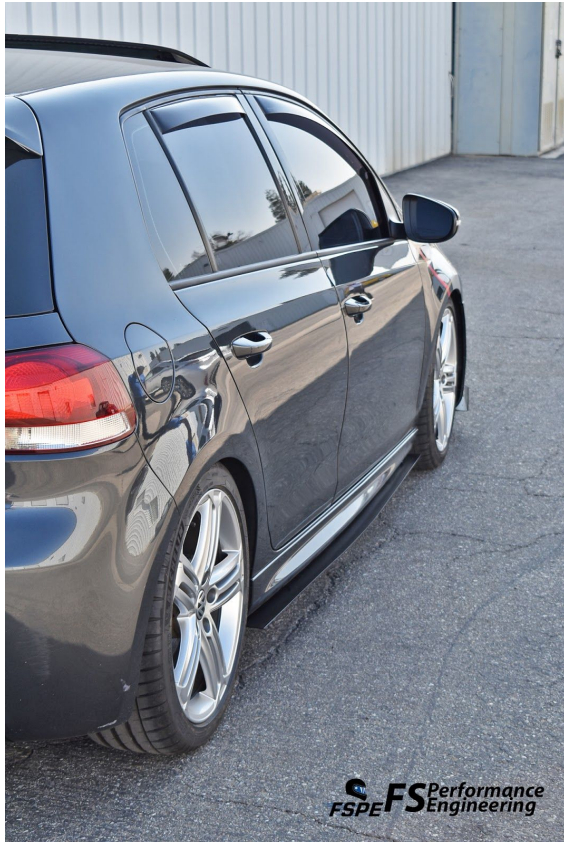
SCREW AT REAR (it is higher than the first 2):



HOW 10MM SPACER SITS AT REAR HOLE:



SKIRT SHOULD SIT LIKE THIS ON THE CAR:



3.) Drill into the rocker panel through the remaining holes in the side skirt using a 1/4" diameter drill bit. ONLY drill through the plastic rocker panel, do not continue to drill above it into the car's body.



4.) Install bolts into the holes just drilled. Use a M6-1.0 x 20mm bolts + 1" OD washers on bottom, and 1/4" ID small washers + nyloc nuts on the inside of the rocker panel. We recommend removing the torx screws / body screw as necessary to be able to reach above the rocker panel. IT WILL BE A TIGHT-A\$\$ FIT. Hopefully you or your friend have skinny fingers (or needle nose pliers if you are good at finessing). Securely tighten the bolts + nuts with 10mm wrenches. SEE ALL PICS BEFORE ATTEMPTING THIS STEP:
EXAMPLE BOLT+WASHER UNDER CAR:



SMALL WASHER + NYLOC NUT ON TOP:





REMOVE THIS SCREW AT THE FRONT OF ROCKER PANEL TO GAIN BETTER ACCESS ABOVE THE ROCKER PANEL:



5.) Reinstall any screws you've removed. Securely tighten. Repeat on the other side of the car.

6.) Enjoy your new FS Performance Engineering side skirt extensions. Send us, or post pictures using #FSPerformanceEngineering.



For questions email costas@fspeinc.com or jim@fspeinc.com

Or call/text us at (661) 809-0954