



## FS Performance Engineering

Volkswagen MK6 GTI (2010-14) / Golf R (2012-13)

### Spoiler Extension Installation Instructions

#### Tools/items needed:

- 5/32" (or 4mm) Allen (hex) key wrench
- 10mm wrench (we didn't need it)
- 1/4" and 1/2" drill bits and a series of drill bits ranging from 1/8" to 1/2". Resulting hole sizes in the spoiler extension will be 1/4" and 1/2". (spiral tapered drill bits recommended)
- Cordless drill
- Flat head screwdriver
- Flexible measuring tape
- Painter's tape
- Towels/blanket (optional/recommended)
- Marker/Sharpie
- A clean OEM spoiler
- A friend/helper

#### Included in Kit

(1) Spoiler Extension w/ applied double-sided tape

(2) 1/4" Countersunk Washers

(2) 1/4"-20x1.25" countersunk stainless steel bolts (longer)

(2) 1/4"-20 (1/2" OD) Wellnuts

(2) M6 Countersunk Washers (longer)

(2) M6-1.0 x 20mm countersunk stainless steel bolts (shorter)

(2) M6 wellnuts



**Steps:**

1. *Step 1 is optional* - it helps with any mess. Begin by placing your blanket or towels onto the rear windshield. We taped paper towels onto the window. As you can see we figured out that drilling made a mess halfway through our installation.

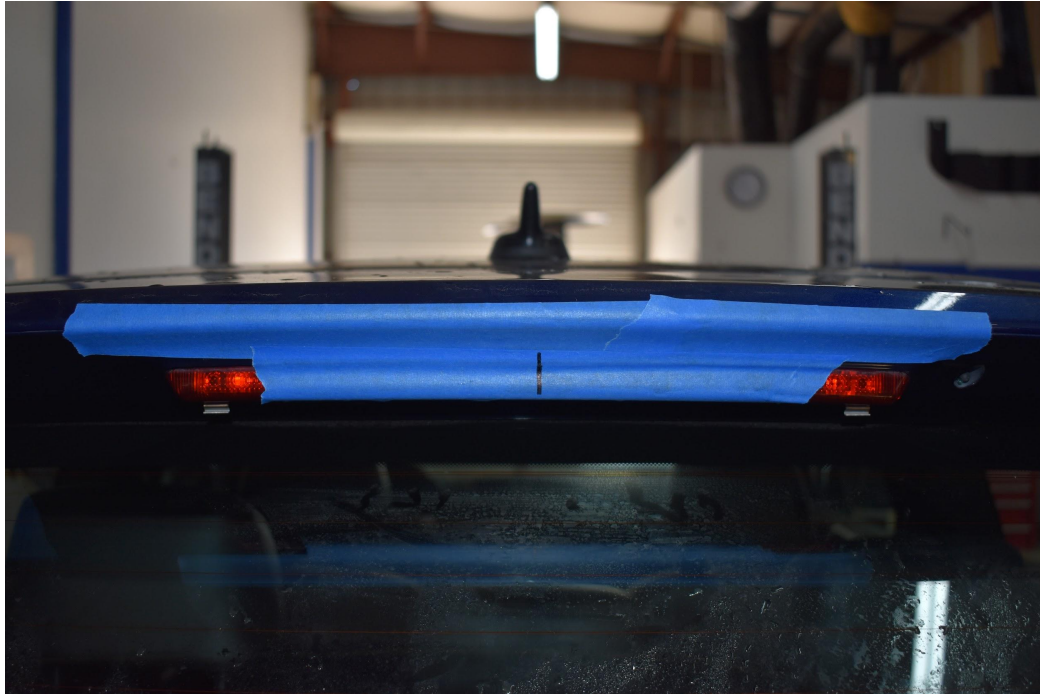


2. Apply painter's tape to the back side of the car's OEM spoiler. Cover the areas shown in the picture including some of the 3rd brake light.





3. With your Sharpie mark the center of the 3rd brake light using the flexible measuring tape.



4. Apply painter's tape to the center of the spoiler extension on the side that faces toward the back of the car. The backside of the spoiler extension is the side that has the washer fluid hole on the right. Mark the center of the spoiler extension with your marker on the painter's tape.

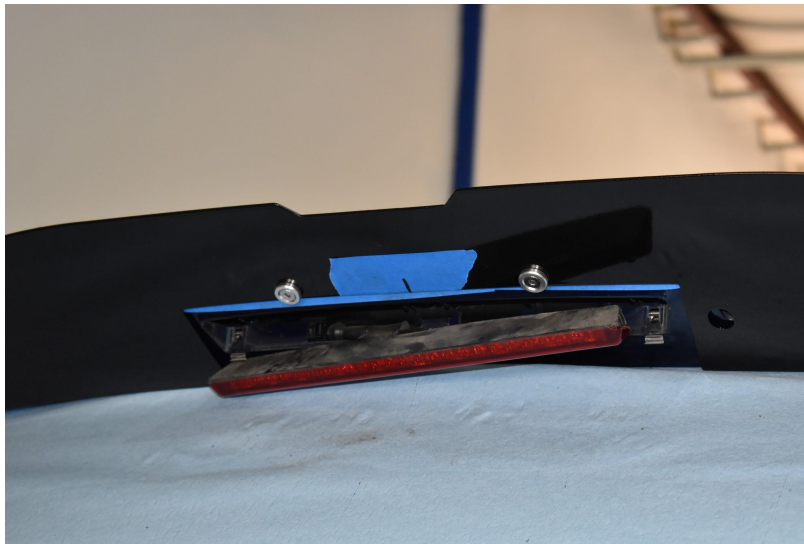




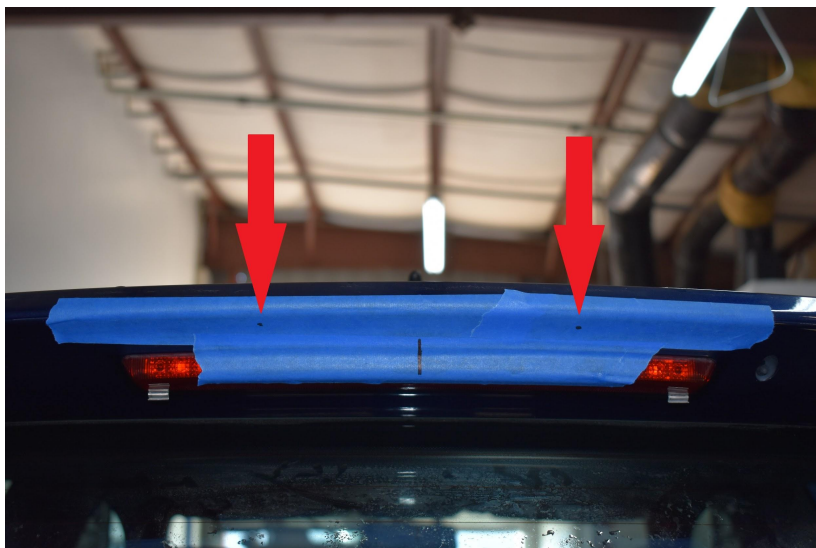
5. Hold the spoiler extension up to the car and center it using the centering marks you just made. The OEM spoiler is raised around the 3rd brake light - allow the spoiler extension to sit JUST above the raised part above the 3rd brake light. Mark the two holes closest to the center in the spoiler extension onto the blue tape.

FAILURE TO FOLLOW THIS INSTRUCTION WILL NOT BE FUN. You want to keep the spoiler extension as close to the 3rd brake light as possible without sitting on the raised portion or you will not have fun putting the nuts on the bolts later. **SECONDLY:** The washer fluid hole in the spoiler extension is offset down and to the left ON PURPOSE. The fluid shoots in that direction onto the window.

How the spoiler extension sits (ignore the bolts/3rd brake light in this picture...):



The marks made with your sharpie onto the painter's tape:

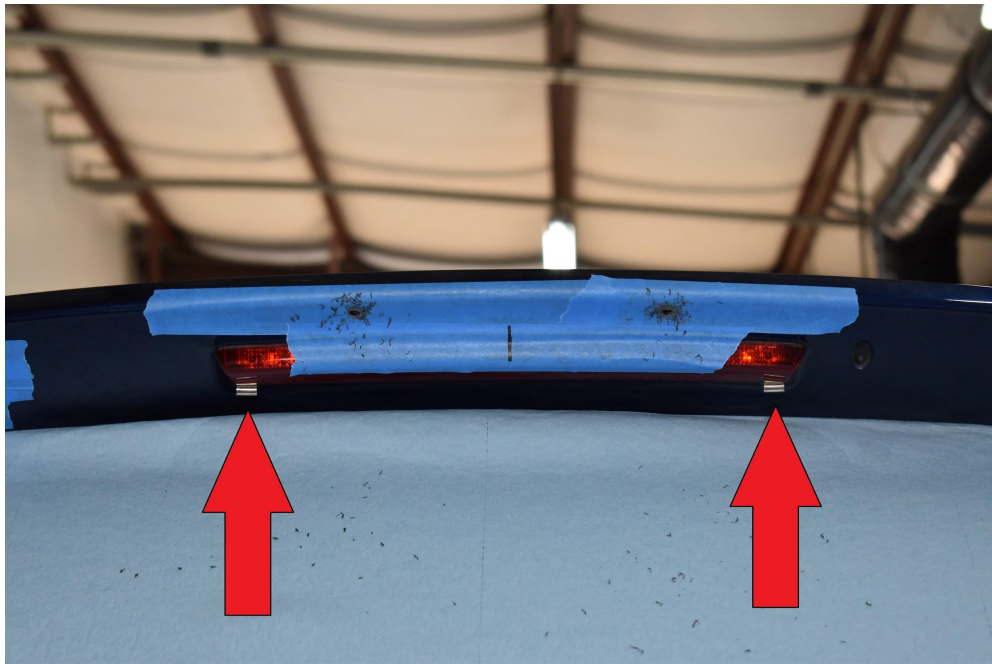




6. Drill two ¼” holes into the two marks just made. There’s some of the mess we were talking about!



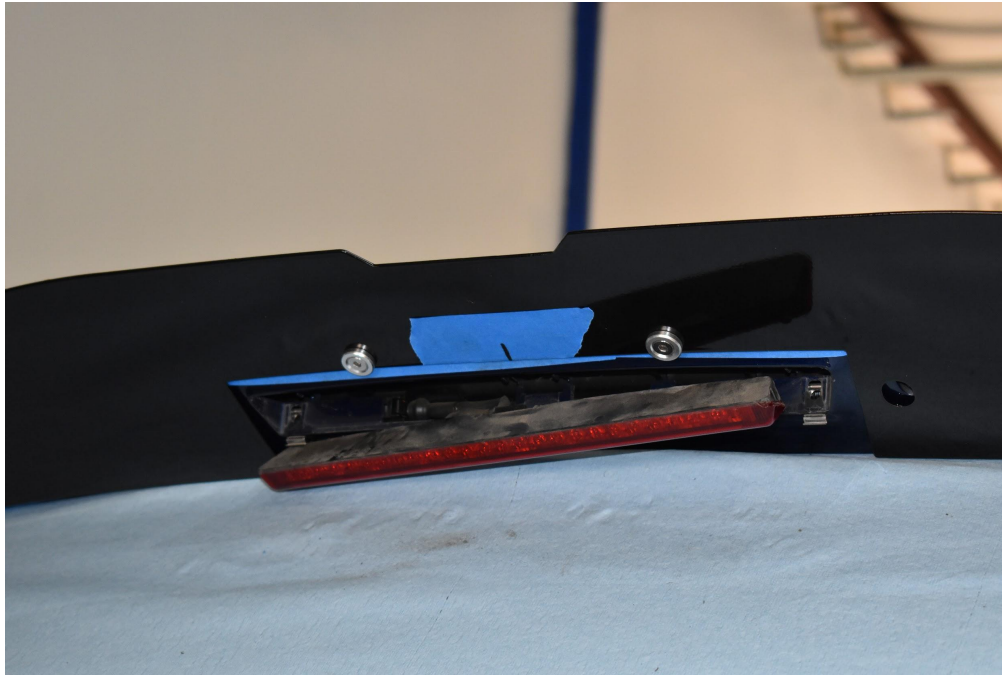
7. Remove the tape over the 3rd brake light. Remove the 3rd brake light. This can be done by first using your flat head screwdriver to push down the silver tabs found on each side of the 3rd brake light, then using the screwdriver to push the top center of the brake light down (2 pics).





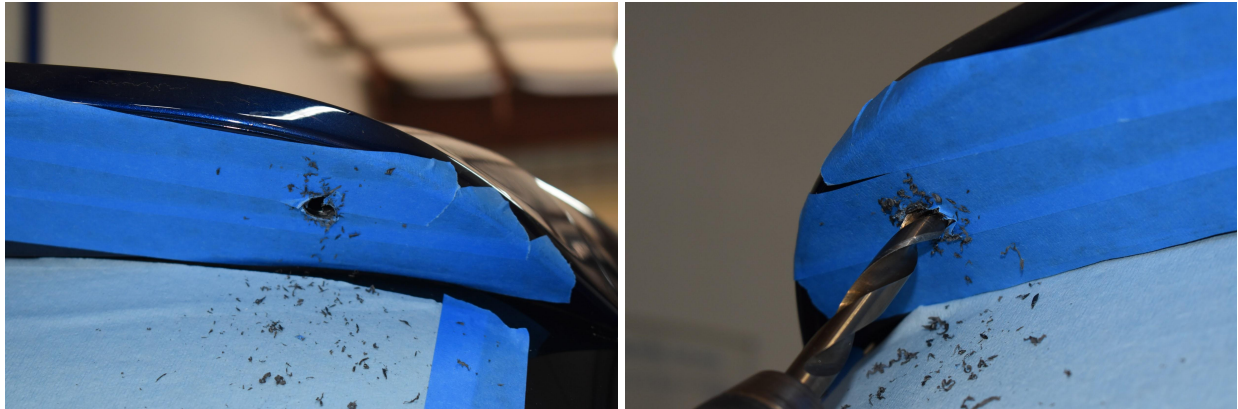
8. Install the spoiler extension onto the car using only the two center holes. Use your M6 bolts and nuts, and your washers. The nuts will sit on the inside of the OEM spoiler (this is a bit tricky to install, have a friend with skinny fingers help). Hand tighten. Feel free to leave the tape on as you will be removing the spoiler extension later.





9. Push the spoiler extension up against the OEM spoiler and mark the outer two holes with your sharpie then remove the spoiler extension. Drill holes into these marked locations. Start with an  $\frac{1}{8}$ " (or small bit) to center the hole then move up to a  $\frac{1}{2}$ " hole. Our transition went like this:  $\frac{1}{8}$ ",  $\frac{1}{4}$ ",  $\frac{1}{2}$ ". Having drill bits that have tapered ends really helps. Be careful with the  $\frac{1}{2}$ " and TAKE YOUR TIME. This is a fairly large hole!





10. Remove all tape and *test fit the spoiler extension*. You know how to install the center two bolts, but the outer two are installed with well nuts. Insert a well nut through the spoiler extension and into the outer holes just made in the OEM spoiler **with a ¼” stainless steel bolt with a washer in the well nut** (I know the picture doesn’t show a bolt/washer in the well nut but we found this prevents losing the well nut into the OEM spoiler). As you tighten the well nut will swell up inside the OEM spoiler and hold the spoiler extension onto the car. *Feel free to test how the well nut works on only the spoiler extension before installing it. That way you can gauge how tight it needs to be.* Tighten everything fairly well and make sure it sits nicely on the OEM spoiler.







11. After test fitting the spoiler extension, remove it and any tape you might have remaining on the spoiler. Remove the red film on the double-sided tape that is preinstalled on the spoiler extension. Reinstall the spoiler extension taking care to not push the tape onto the OEM spoiler until the bolts and well nuts have been tightly installed.

12. You are done! Enjoy your new FSPE rear spoiler extension! Feel free to reach out with any questions or concerns.



For questions email [costas@fspeinc.com](mailto:costas@fspeinc.com) or [jim@fspeinc.com](mailto:jim@fspeinc.com)

Or call/text us at (661) 809-0954