



FS Performance Engineering

Volkswagen MK6 Golf GTI Flat Underbody Installation Instructions

Tools Needed:

- 10mm wrench
- 10mm socket
- Ratchet wrench
- 1/4" drill bit
- Drill
- A helping hand (friend)

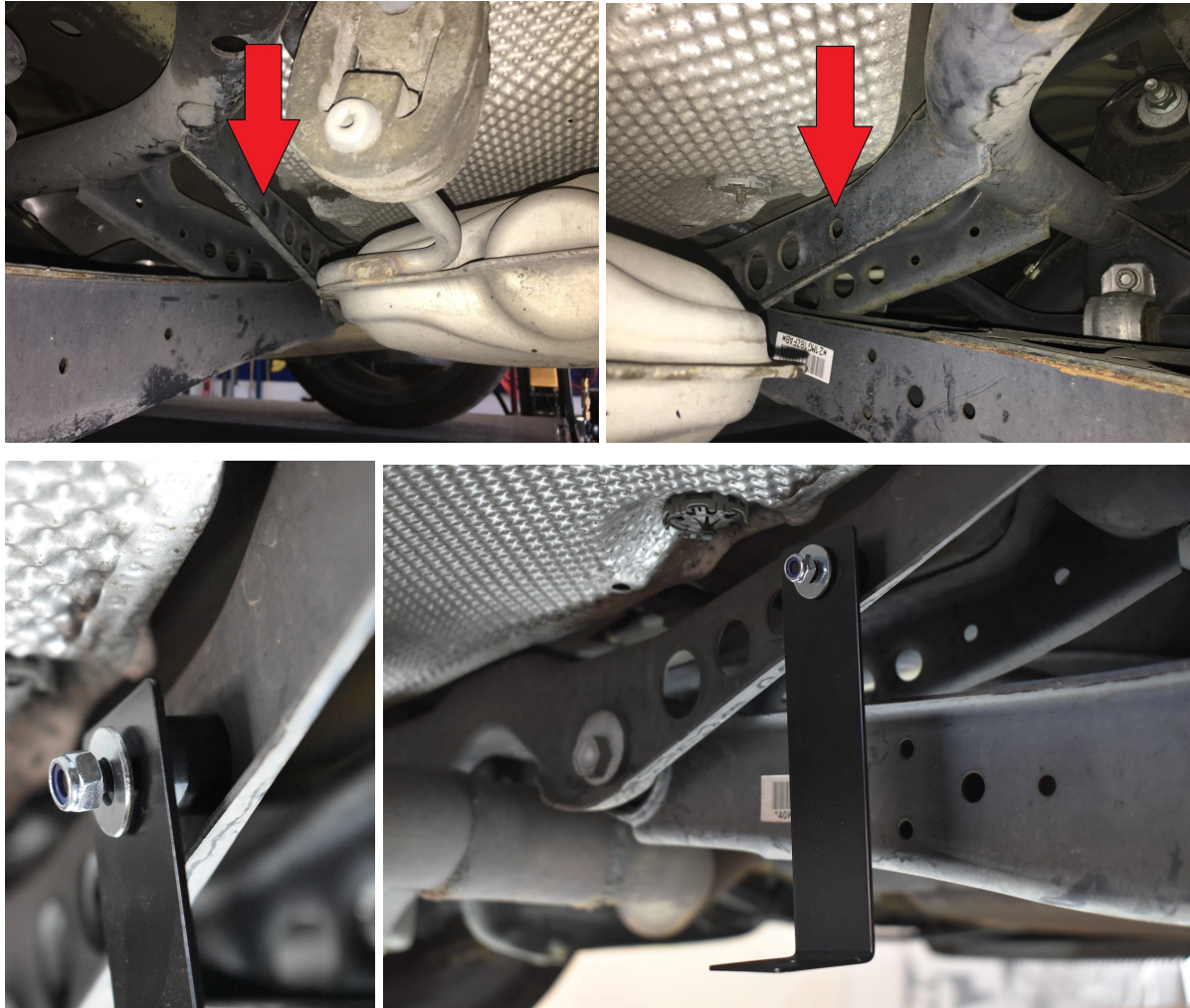
Included in Kit:

- (2) Steel L-brackets (for rear control arm bracing)
- (2) Aluminum L-brackets
- (1) Rearward under body panel w/ riveted L-channel & u-brace
- (1) Forward under body panel

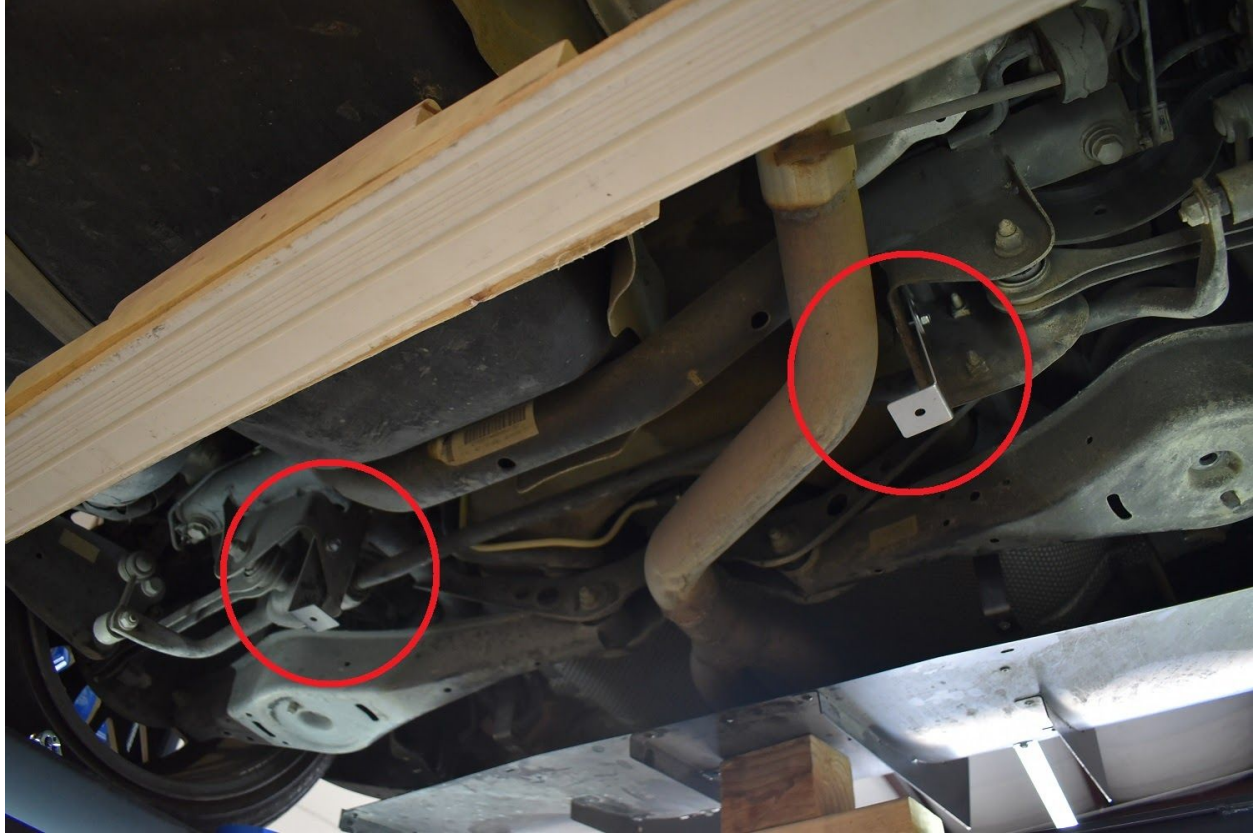
- (9) M6-1.0 x 20mm bolts
- (5) M6-1.0 x 30mm bolts
- (2) M6-1.0 x 45mm bolts
- (1) 10mm spacer
- (5) 15mm spacers
- (2) 20mm spacers
- (17) 1" OD fender washers
- (8) 1/4" small washers

Steps:

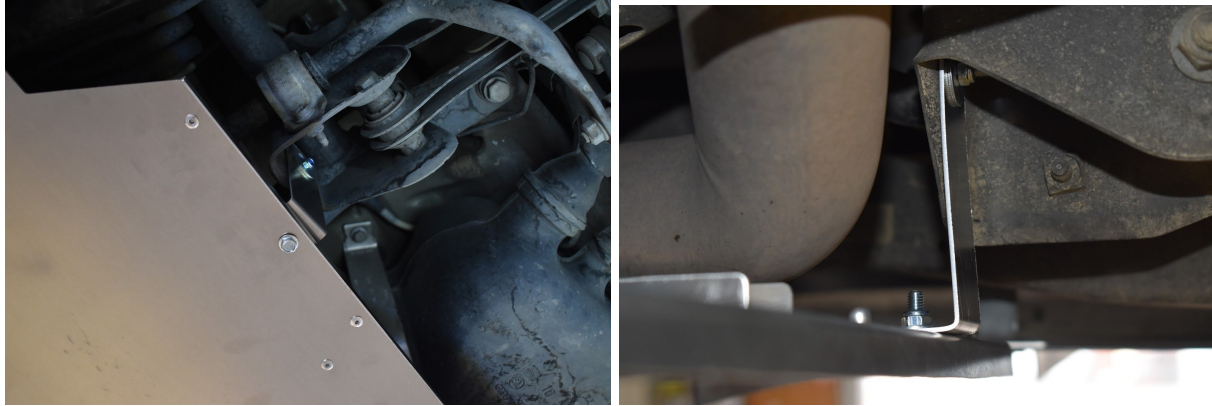
- 1.) Lift the car. We recommend a lift you can stand under, not jack stands.
- 2.) Identify the outer holes in the rear subframe right behind the rear control arms. Install your supplied steel L-brackets onto those holes (1 on each side). Send M6-1.0 x 30mm long bolts from the front, then a 15mm spacer, then bracket, then 1/4" small washer, then M6 nyloc nut. Leave loose. (4 PICS)



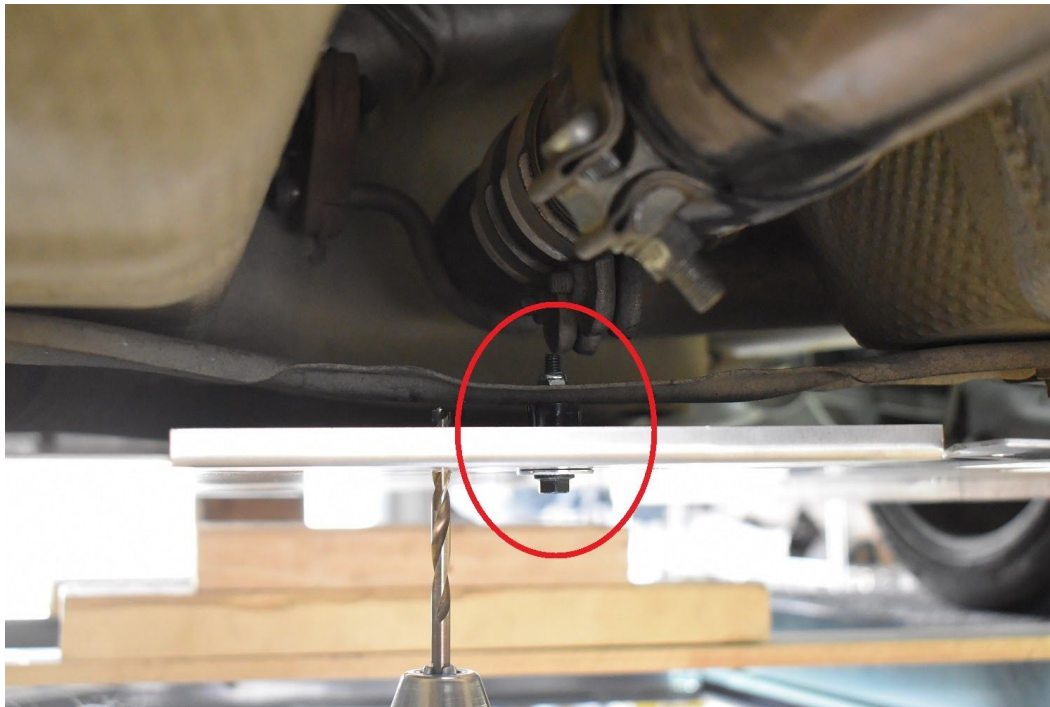
3.) Identify the holes found toward the inside of the car between the rear control arms and frame. Install your aluminum L-brackets into these holes with the bolts facing toward the outside of the car. Use M6-1.0 x 20mm bolts, 1" fender washers on both sides, and M6 nyloc nuts. Leave loose.



4.) Install your rearward underbody panel onto the steel L-brackets, and aluminum L-brackets. For the steel L-brackets use M6-1.0 x 20mm bolts pointing upward - 1" OD fender washers on bottom, and 1/4" small washers + M6 nyloc nuts on top. For the aluminum L-brackets use M6-1.0 x 20mm bolts pointing upward - NO washers on bottom, 1/4" small washers + nyloc nuts on top. ALUMINUM L-BRACKET EXAMPLE:

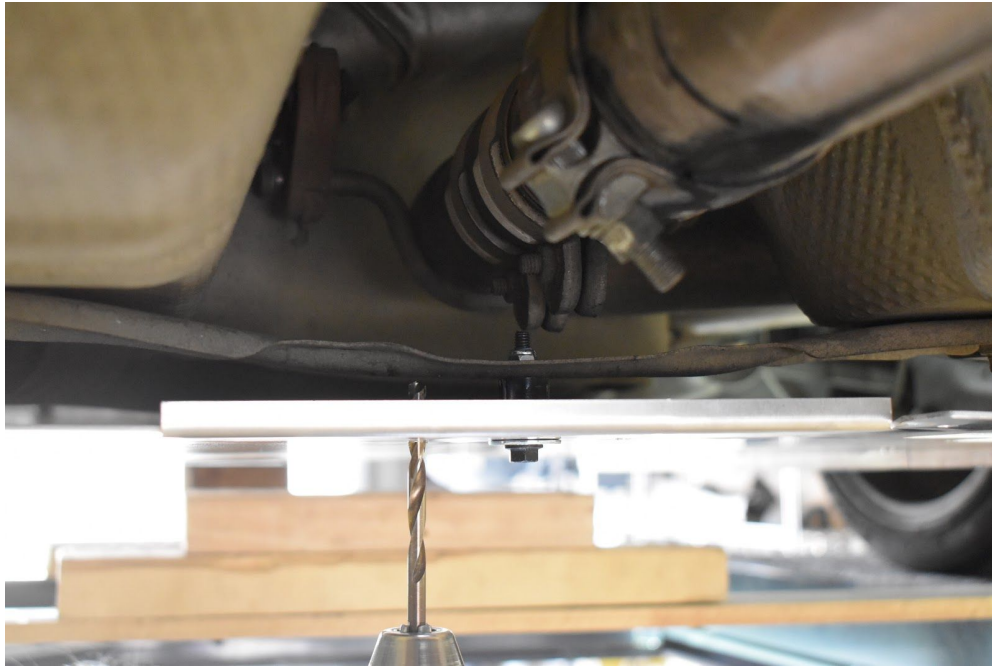


5.) Now, install the front end of the rearward underbody panel onto the chassis bracing. There will be one hole in the center of it that matches up to the panel. Use a M6-1.0 x 30mm bolt pointing upward - 15mm spacer in between, 1" OD fender washer on bottom, M6 nyloc nut on top. Securely tighten.

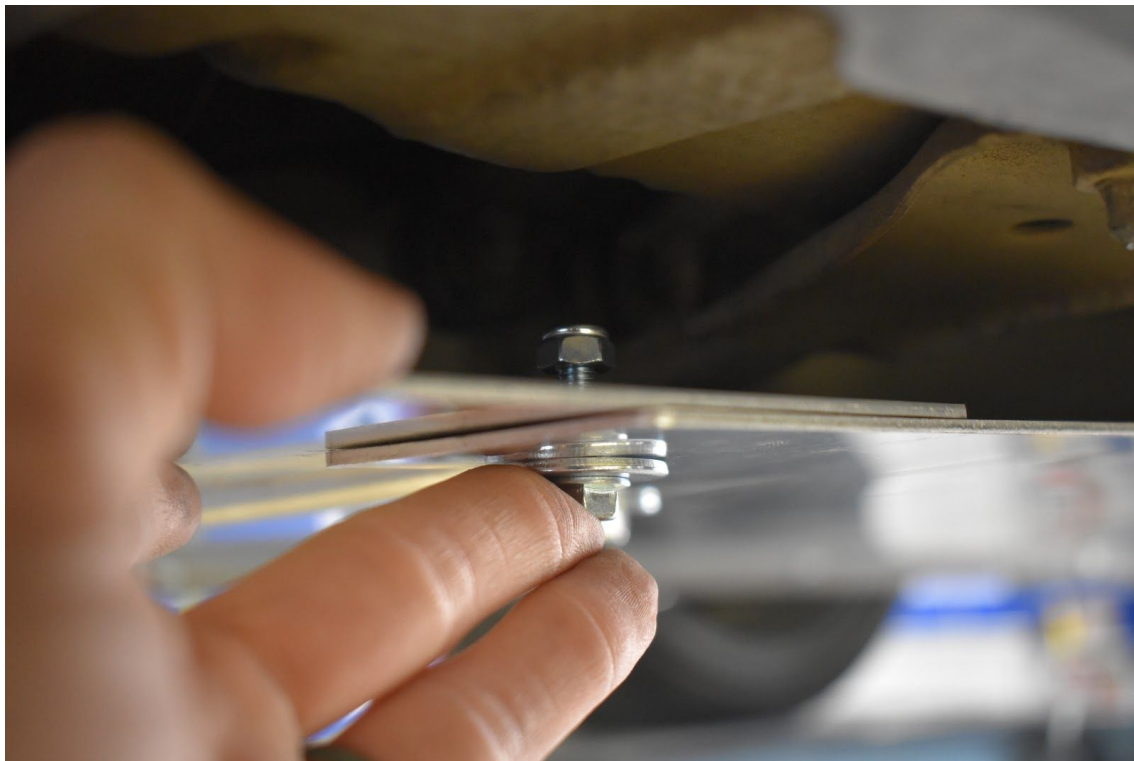


6.) There are holes in the rearward panel on either side of the hole from the previous step. Drill through those holes into the chassis bracing with a 1/4" diameter drill bit. BE SURE TO DRILL STRAIGHT UP & feel free to start with a little bit first to align the hole. Then, install the same bolt/washer/spacer/nut combination into the holes just drilled. You might have to loosen the

center bolt to get the spacers in between. IF YOU ARE AFRAID THE BOLTS MIGHT TOUCH YOUR EXHAUST, FLIP THEM UPSIDE DOWN LIKE WE DID! Securely tighten. THEN go back to the L-brackets and tighten the bolts toward the tops of those.



7.) Now, install the forward underbody panel onto the rearward underbody panel. Two slip together butting up against one another. Use M6-1.0 x 20mm bolts pointing upward - 1" OD fender washers on bottom, 1/4" small washers & nyloc nuts on top. It will be wise to leave these loose for the next step.

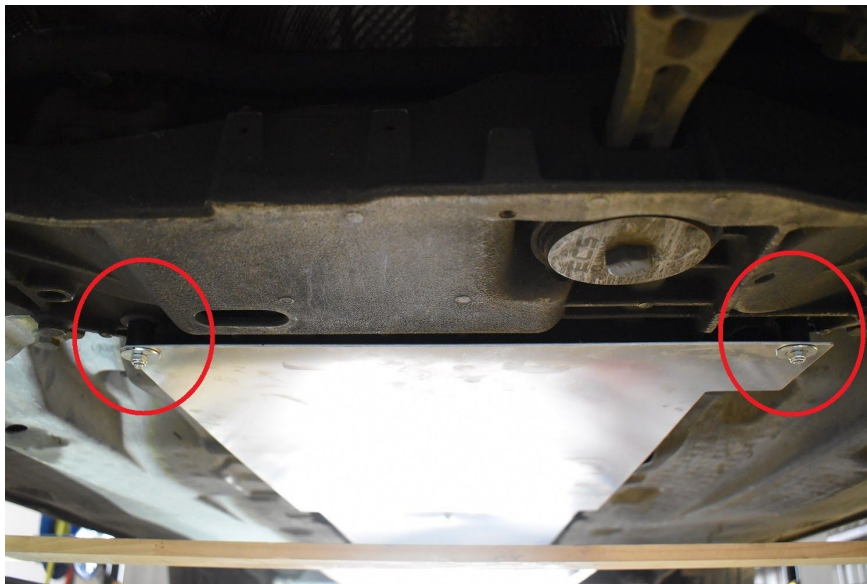


8.) Install the center hole onto the second chassis brace toward the front of the car. Use a M6-1.0 x 20mm bolt pointing upward, no washer on bottom, a 10mm spacer between, 1/4" small washer and M6 nyloc nut on top. Securely tighten. THEN go back and securely tighten the bolts/nuts from the previous step.



9.) Last but not least... install the front end of the underbody panel onto the actual chassis. These holes aren't too hard to find as they should line up with your underbody panels. You're going to use the M6-1.0 x 45mm long bolts with 20mm spacers between the panel and chassis, 1" OD fender washers on top and bottom, and M6 nyloc nuts. Point the bolts DOWNWARD. Securely tighten.

PRO TIP: take your time when slipping the bolts down from the top. You have to find a good way to get in there.



10.) Make sure everything is securely tightened and you are good to go!!!



11.) Enjoy your new FS Performance Engineering aero! Tag us & use #FSPerformanceEngineering in the online world!!



For questions email costas@fspeinc.com or jim@fspeinc.com
Or call/text us at (661) 809-0954