



FS Performance Engineering

Volkswagen MK6 (2010-2014) Golf GTI Diffuser V3 Installation Instructions

Tools Needed:

- 10mm wrench
- 10mm socket + ratchet wrench
- Torx 25 (T25) wrench
- Flat Head Screwdriver
- Masking/painter's tape
- 1/4" Drill Bit
- Hand Drill
- Friend/helper

Included in Kit:

- (1) Center Diffuser
- (1) Passenger Side Diffuser
- (1) Driver Side Diffuser
- (2) Control Arm Brackets
- (2) Bumper Brackets
- (2) Tall Angled Spacers
- (2) Connecting tabs

- (20) M6-1.0 x 20mm bolts
- (2) M6-1.0 x 30mm bolts
- (2) M6-1.0 x 90mm bolts
- (2) 5mm Spacers
- (12) 1/4" ID, 1" OD Fender Washers
- (28) 1/4" ID Small Washers
- (24) M6 Nyloc Nuts

Steps:

1. Raise the rear of the car and secure with jack stands.
2. Identify the T25 bolts that hold the rear valence onto the car. Remove them with your T25 screwdriver/wrench. (3 PICS)



Driver's Side:



Passenger Side:

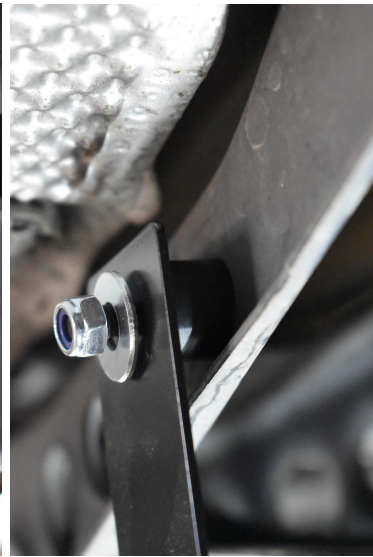


3. Remove the rear valence by pulling it away from the car. Feel free to use a flat head screwdriver to help pry the tabs away from the bumper. (3 PICS)





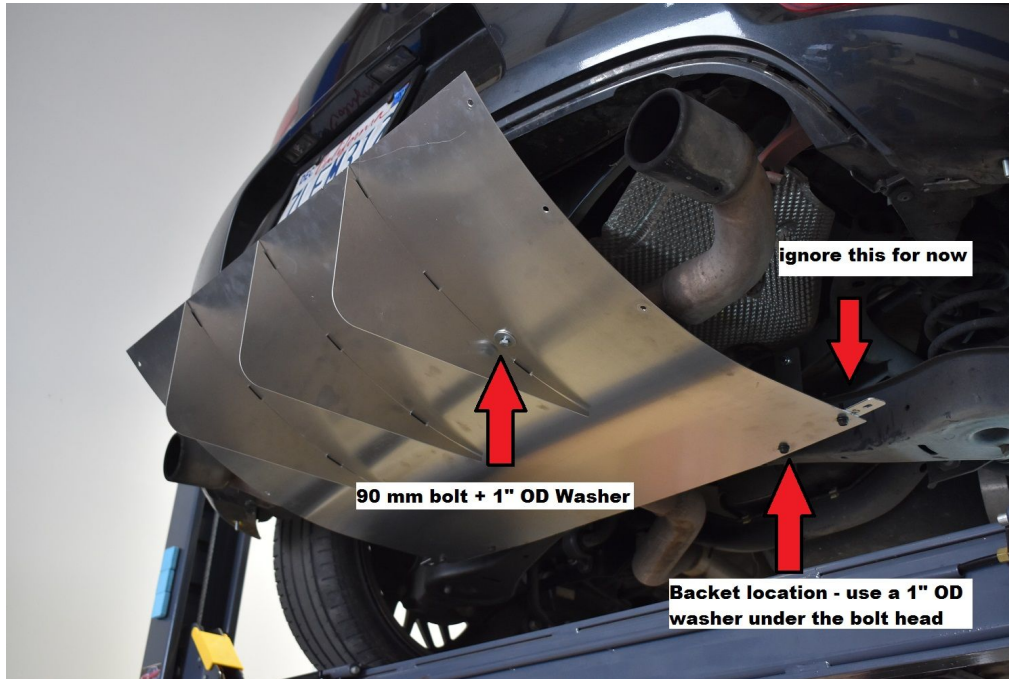
4. Identify the outer holes in the rear subframe right behind the rear control arms. Install your supplied brackets onto those holes (1 on each side). Send 30mm long bolts from the front, then a 15mm spacer, then bracket, then 1/4" small washer, then M6 nyloc nut. Leave loose. (3 PICS)



5. With help from a friend loosely install the center diffuser onto the brackets. Use 20mm long bolts pointing upward with a 1" OD fender washer on the bottom, and ¼" small washer + nyloc nut on top. (1 PIC - passenger side shown) Then....



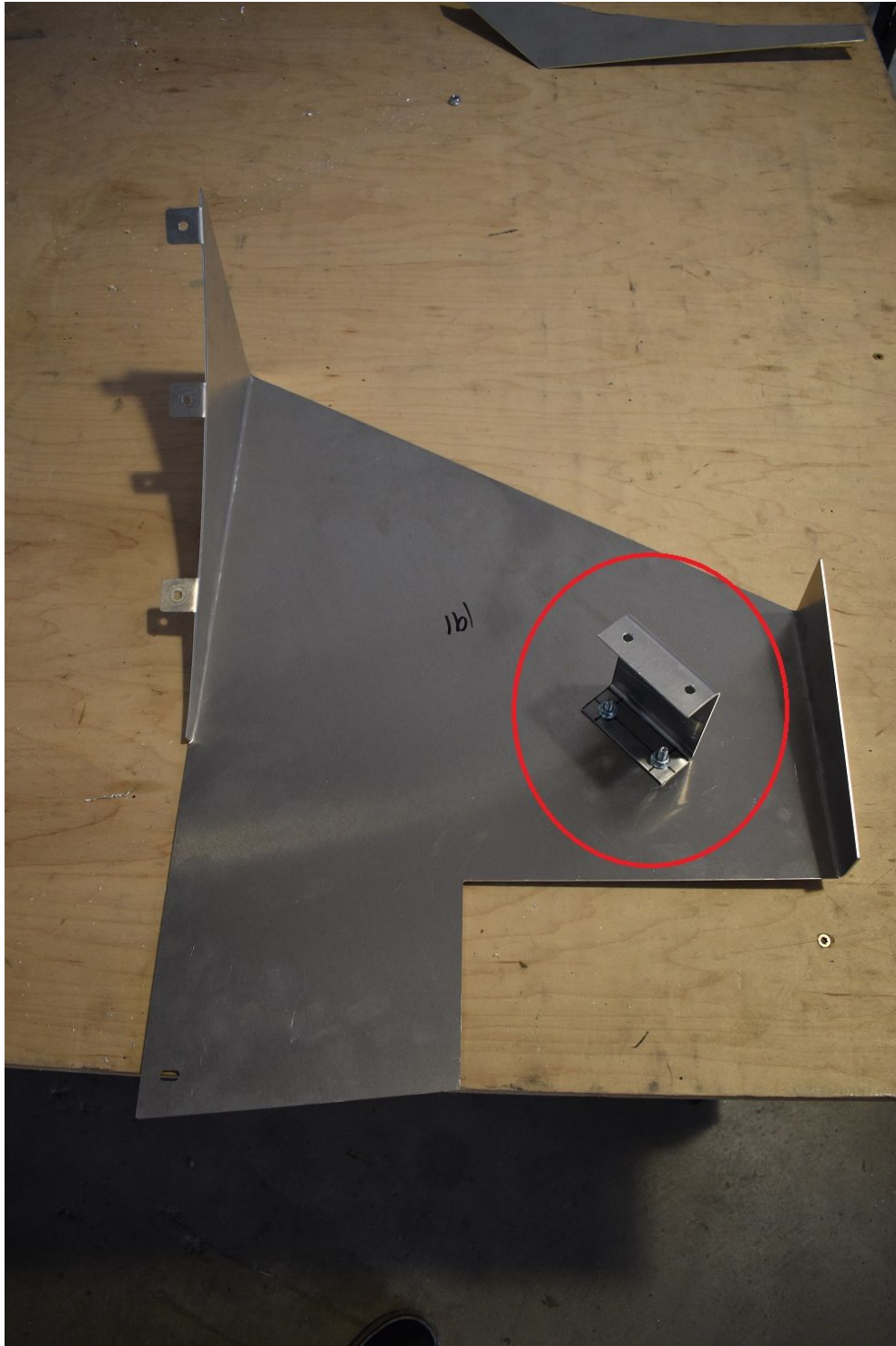
6. Install the center diffuser onto the newly exposed holes found when the valence was removed. Use the longest bolts (90mm) + 1" OD fender washers on the bottom, the angled spacers between the diffuser and exposed holes, and ¼" small washers + nyloc nuts on top. Feel free to securely tighten - don't overtighten. Be sure to place the angled side of the spacers onto the diffuser. (2 PICS) THEN GO BACK AND TIGHTEN THE BOLTS FROM STEP 5 AND THEN FROM STEP 4.



Angled Spacer(s):



7. Step to the side and install the supplied bumper brackets (symmetrical) onto the passenger and driver side diffusers. Use the 20mm bolts + 1" OD fender washer on bottom, and 1/4" ID small washers + nyloc nuts on top. Tighten securely. (1 PIC - DRIVER SIDE SHOWN)

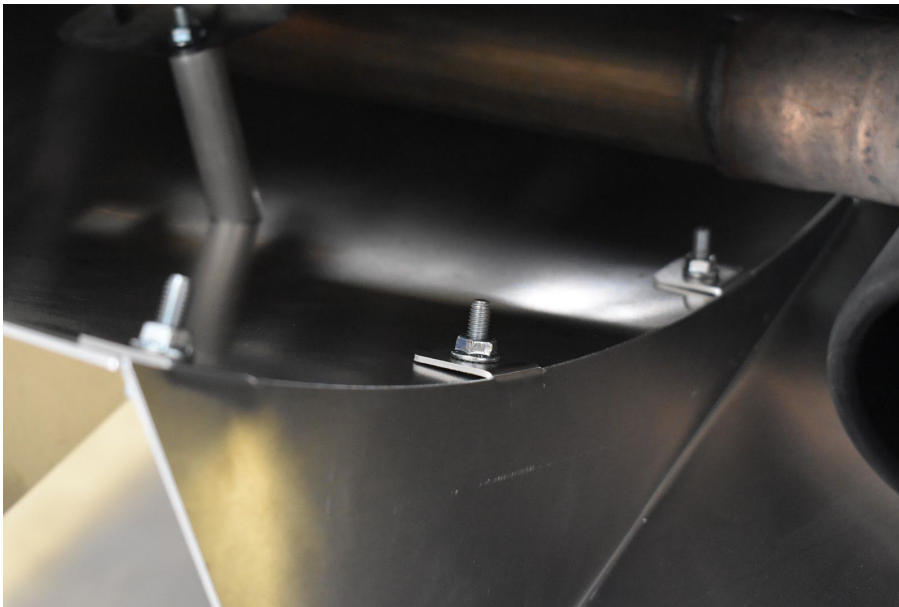


8. Place masking/painter's tape onto the underside of the bumper on both sides of the car in the area shown. (ignore the black marks for now) (1 PIC)



9. Install the passenger + driver diffuser pieces onto the center diffuser and tighten somewhat securely. Use 20mm bolts pointed upward, then 1/4" ID small washers + nyloc nuts on top. Then hold up the outer diffusers against the bumper, assure the diffuser is square and even on both sides, and mark the holes with your sharpie through the bumper brackets onto the underside of the bumper. (2 PICS)

TABS FOR BOLTS:





10. Remove the outer diffuser pieces and drill the holes you just marked on the bumper. Use your drill and $\frac{1}{4}$ " diameter drill bit. (1 PIC)

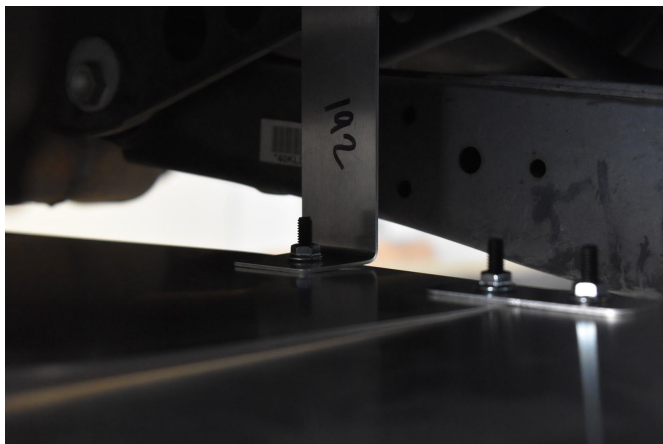


11. Now for the fun part. Install the passenger + driver side diffuser pieces. For attachment of the curved portion onto the center diffuser point 20mm long bolts upward with $\frac{1}{4}$ " small washers + nyloc nuts on top. For the bumper brackets (into bumper) point 20mm bolts upward with $\frac{1}{4}$ " small washers on BOTH bottom and top, and a nyloc nut on top. THEN install the connecting tabs that connect the center diffuser onto the outer diffuser portions. Point those bolts upward with a 1" OD fender washer on bottom, and $\frac{1}{4}$ " small washers + nyloc nuts on top. Tighten all bolts/nuts!! (3 PICS)

BOLT LOCATIONS FOR THIS STEP:



CONTROL ARM BRACKET + TAB





SHOULD LOOK LIKE THIS ONCE INSTALLED:



12. Enjoy your new FS Performance Engineering Diffuser! Don't forget to send us pictures once it is installed.



For questions email costas@fspeinc.com or jim@fspeinc.com
Or call/text us at (661) 809-0954