



FS Performance Engineering

Toyota Tacoma V6 Catalytic Converter Guard (2005-2015) Installation Instructions
Professional Installation Recommended as Always - A car LIFT is HIGHLY Recommended

Tools Needed:

- Ratchet Wrench(es)
- ¼" Socket
- ½" Socket & Wrench
- 17/32" Drill Bit (for the 5/16" Rivnuts) - a step drill works wonders as well
- Drill (wear safety protection when drilling)
- Rivnut (threaded rivet nut) Installation Tool (a heavy duty one is necessary) with a 5/16"-18 mandrel
- Helper
- Marker / Pencil / Pointy Tool / Sharpie

What's Supplied:

Parts:

- (1) Tacoma Cat Guard
- (1) Rear Mounting Bracket

Hardware:

BAG 1

- (1) Security Bit (3/16")
- (4) 5/16"-18 x 1" SECURITY Bolts
- (4) 5/16" x 1.25" Washers
- (6) 5/16"-18 SHORT Rivnuts (2 are extra just in case)

BAG 2

- (2) 5/16"-18 x 4.5" Hex Head Bolts
- (2) 5/16"-18 Nyloc Nuts
- (2) 50mm Spacers
- (8) 5/16" x 1.25" Washers

BAG 3

- (2) 5/16"-18 x 5" Hex Head Bolts
- (2) 5/16"-18 Nyloc Nuts
- (4) 5/16" x 1.25" Washers

BAG 4

- (1) Threadlocker



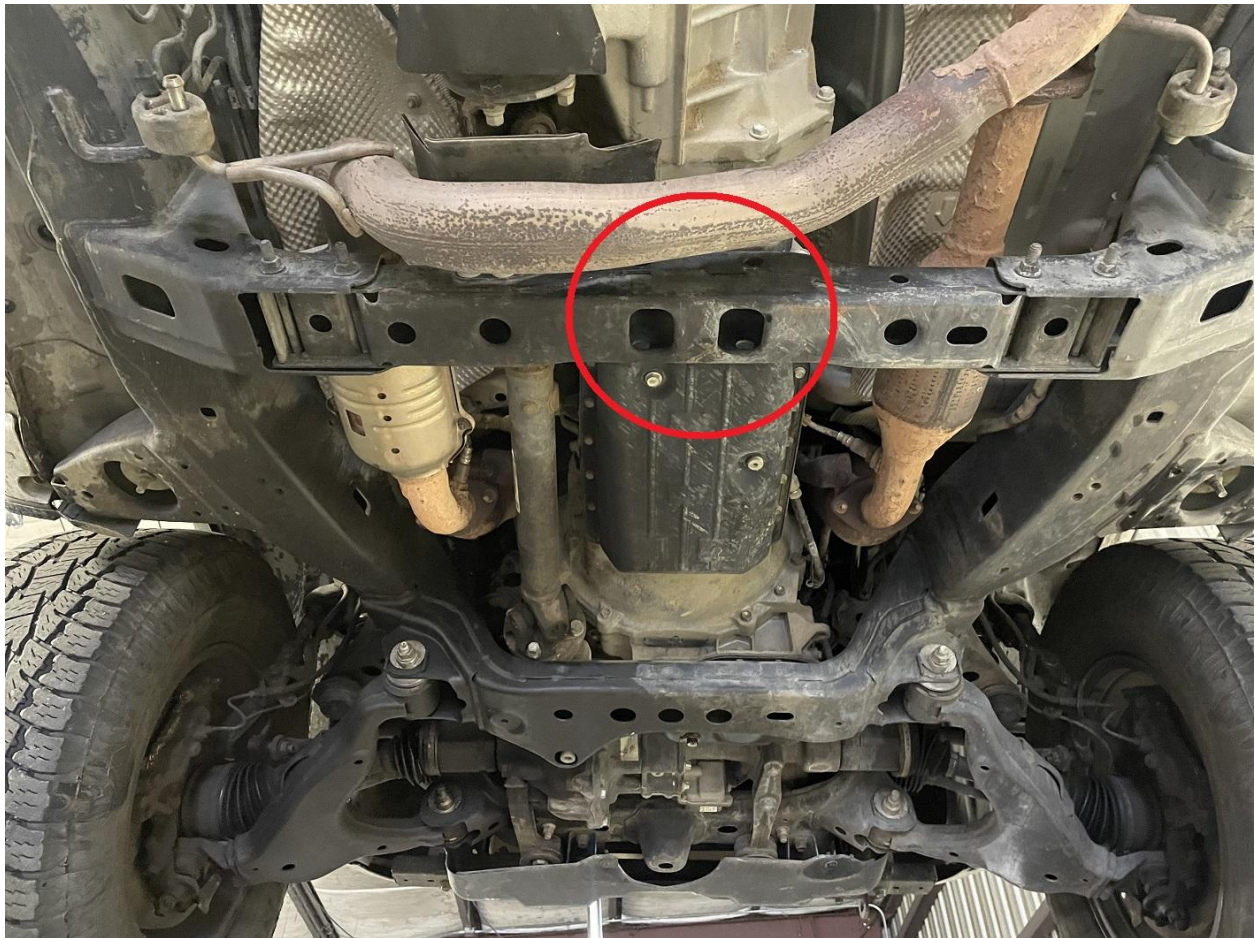
← Threaded Rivet Nut (Rivnut) Help

Steps:

1.) Begin by raising your Tacoma. Place it securely on jack stands. Or alternatively use a vehicle lift (highly recommended). The vehicle must be high enough for you to use your rivet nut installation tool (rivnut tool).

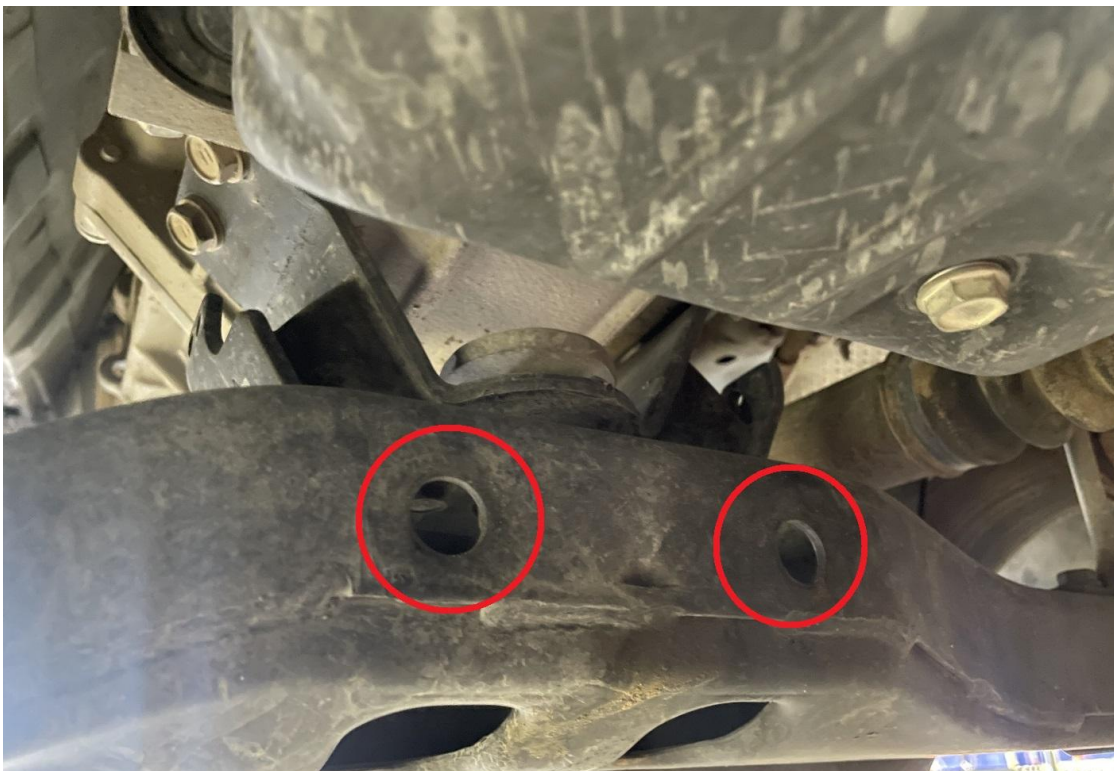
2.) Install your rear mounting bracket onto the backside of the transmission crossmember. Use the 5/16" (5" long) bolts, washers, and nuts. The bracket mounts to 2 original holes - the bolts pass all the way through the crossmember. Point the bolts toward the front of the truck. Securely tighten.

Note: your bracket may be on slots. We recommend sliding it down all of the way at this time. If you feel it's too low during cat guard installation, you may move it upward during the final install.





BACKSIDE OF TRANSMISSION CROSSMEMBER



FRONT SIDE OF TRANSMISSION CROSSMEMBER

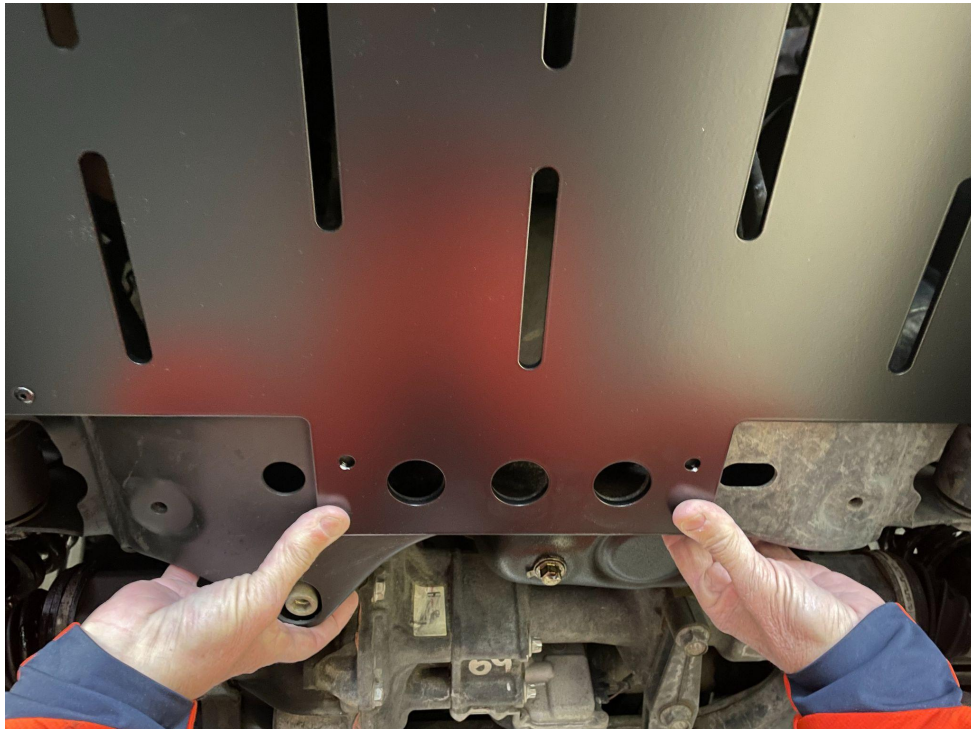


3.) Install your cat guard onto the bracket using two security bolts. Hand tighten for now. Hold the front of the guard up against the frame.

Note: the security bit for the bolts fits into a ¼” socket.



4.) Align the front of the cat guard with the frame. Mark through the two outer holes onto the frame. Then remove the cat guard.

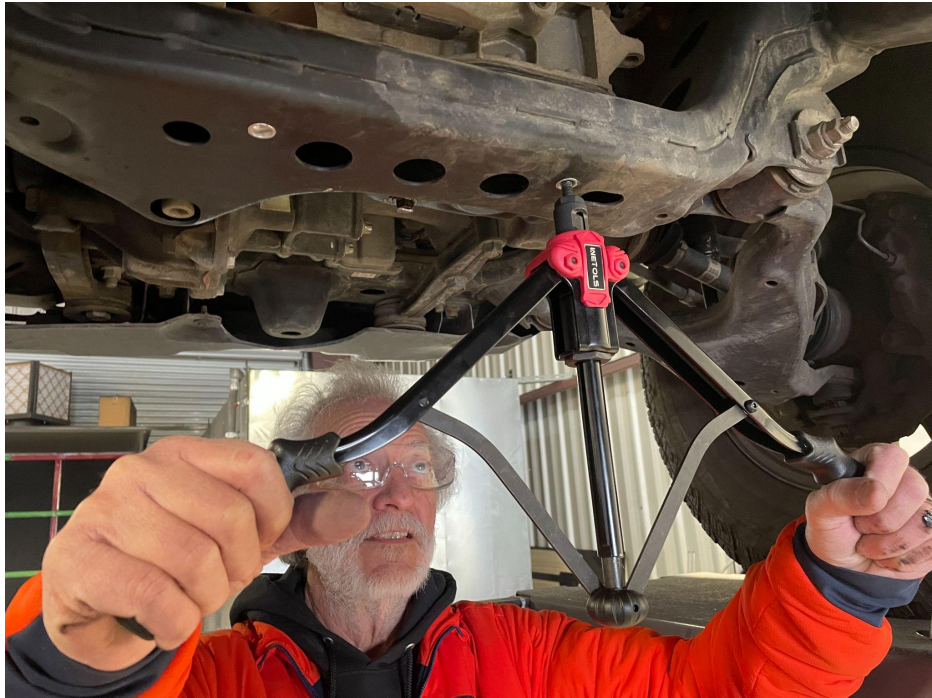




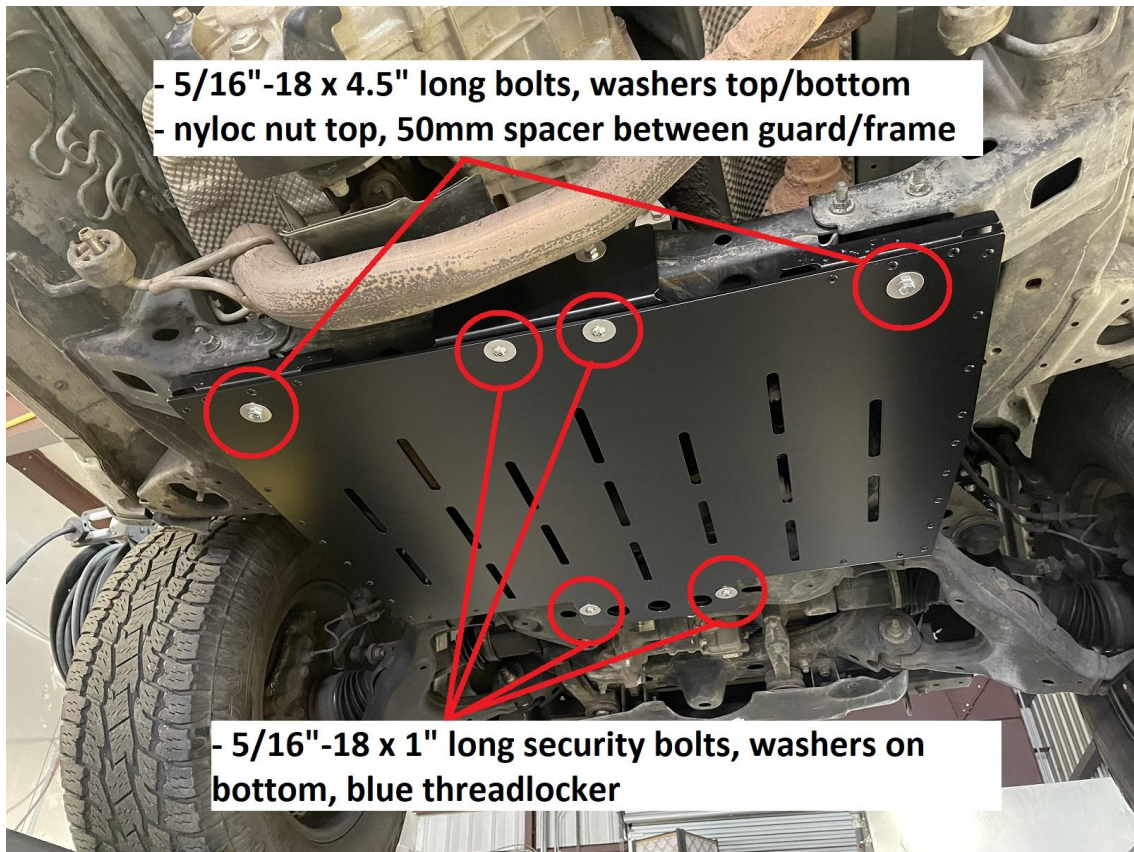
5.) Drill $17/32$ " holes where you just marked. Feel free to start with a small drill bit and work your way up to a $17/32$ " drill bit - you can use a step drill. Alternatively you can drill a $1/2$ " hole and use a dremel tool to bore it out to a $17/32$ " hole.



6.) Install 5/16"-18 rivnuts into the holes just drilled. If you don't know what a rivnut is, simply use the QR code on the first page.



7.) Install your cat guard. Don't over tighten the bolts. Here is how it mounts:



Outer rear bolts with spacers:



8.) Double check all bolts are secure and you are done! Feel free to tag us online using #FSPerformanceEngineering or #FSPEinc. If you have any questions don't hesitate to contact us.



PHONE: 661-809-0954 EMAIL: costas@fspeinc.com
THANK YOU :)