

## FS Performance Engineering

Toyota Sequoia/Tundra (2000-06) Catalytic Converter Guard Installation Instructions  
Professional Installation Recommended as Always - A car LIFT is HIGHLY Recommended

### **Tools Needed:**

- Ratchet Wrench(es)
- 1/4" Socket (to hold Security Bits)
- 7/16" Socket AND Wrench
- 13mm Socket or Wrench
- 25/64" Drill Bit (for the 1/4" Rivnuts)
- Drill
- Rivnut Installation Tool (a heavy duty one is necessary) w/ a 1/4"-20 mandrel
- Helper

### **What's Supplied:**

#### **Parts:**

- (1) Main Catalytic Converter Shield
- (1) Rearward Bolt-on Piece (for 2WD vehicles only)

#### **Hardware:**

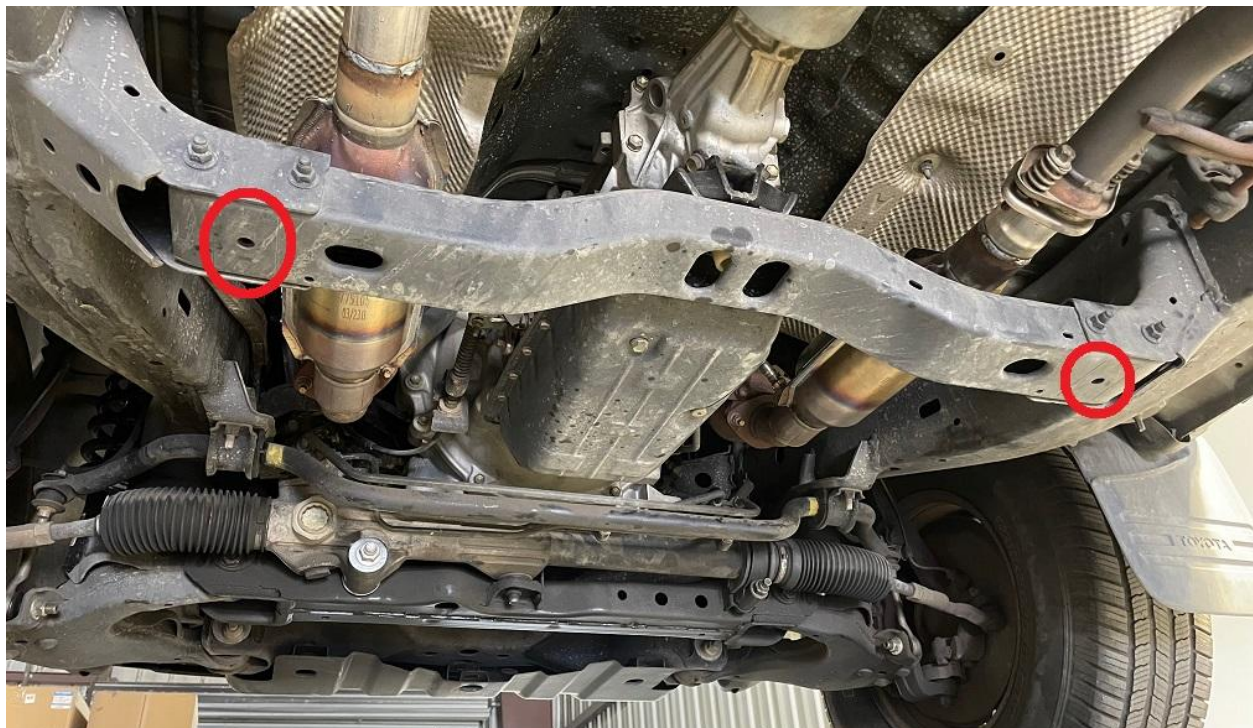
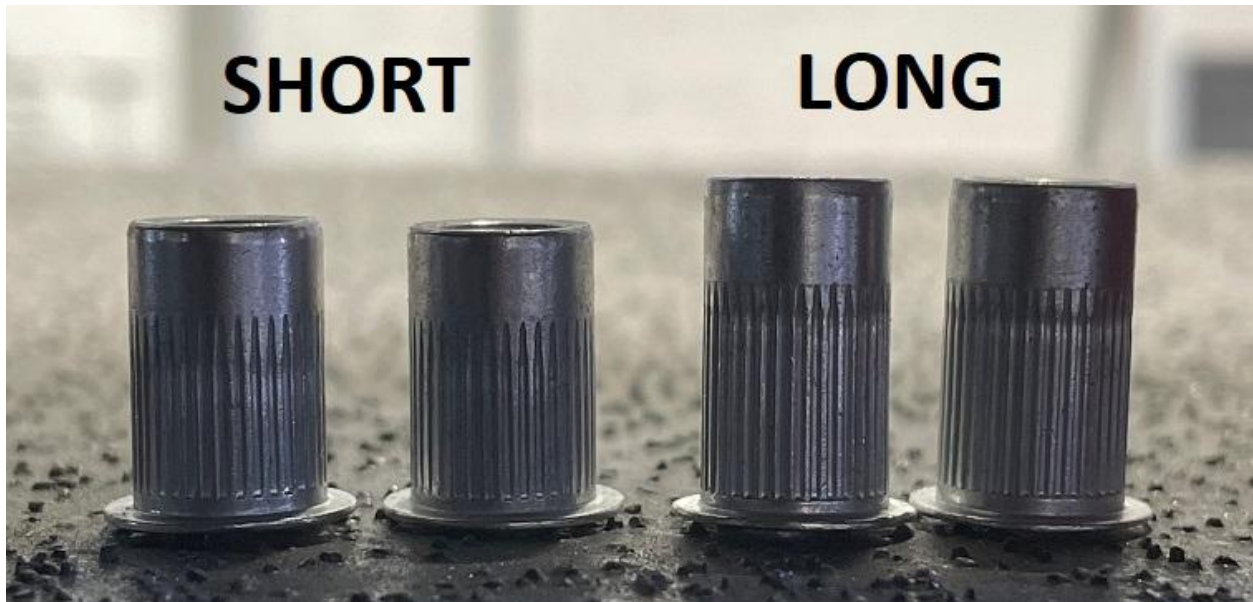
- (2) M8-1.25 x 30mm HEX bolts
- (2) M8-1.25 x 20mm SECURITY bolts
- (2) 5/16 ID, 1.25" OD Washers
- (1) 3/16" SECURITY Bit
- (5) 1/4"-20 x 1" Hex Head Bolts
- (5) 1/4"-20 Zinc Nyloc Nuts
- (3) 1/4"-20 LONG Rivnuts (1 is extra)
- (3) 1/4"-20 SHORT Rivnuts (1 is extra)
- (4) 1/4"-20 x 2-3/4" SECURITY Bolts
- (4) 1/4"ID x 1"OD Washers
- (1) Security Bit (5/32")
- (4) 40mm Spacers
- (1) Blue Threadlocker



← Threaded Rivet Nut (Rivnut) Help

**Steps:**

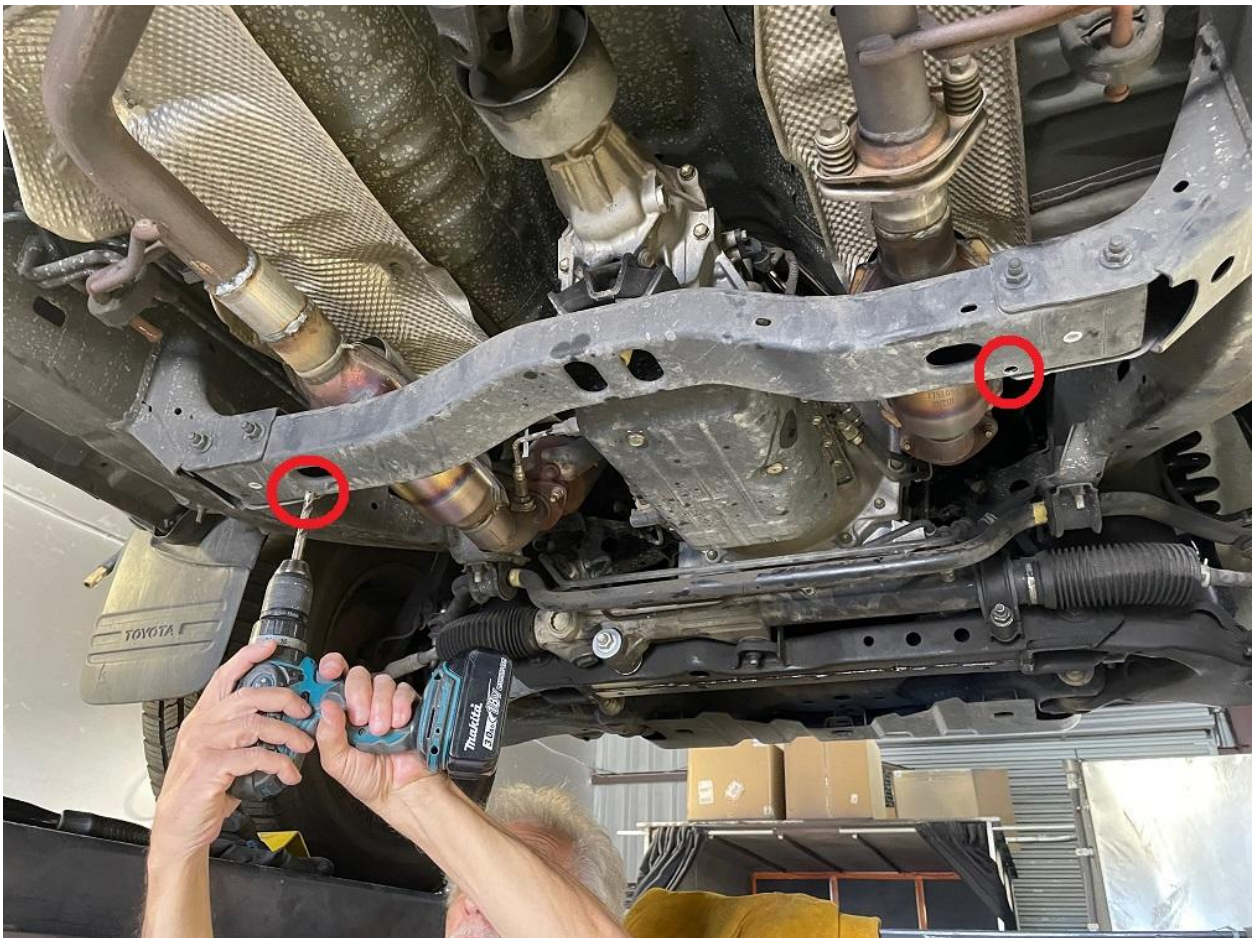
- 1.) Begin by raising your Toyota. Place it securely on jack stands. Or alternatively use a vehicle lift. The vehicle must be high enough for you to use your rivnut installation tool.
- 2.) Identify the crossmember that supports the transmission. Identify the 2 holes shown in the pictures below. Install a LONG ¼" rivnut into each hole. If you don't know what a rivnut installation tool is, see the QR code on the first page.



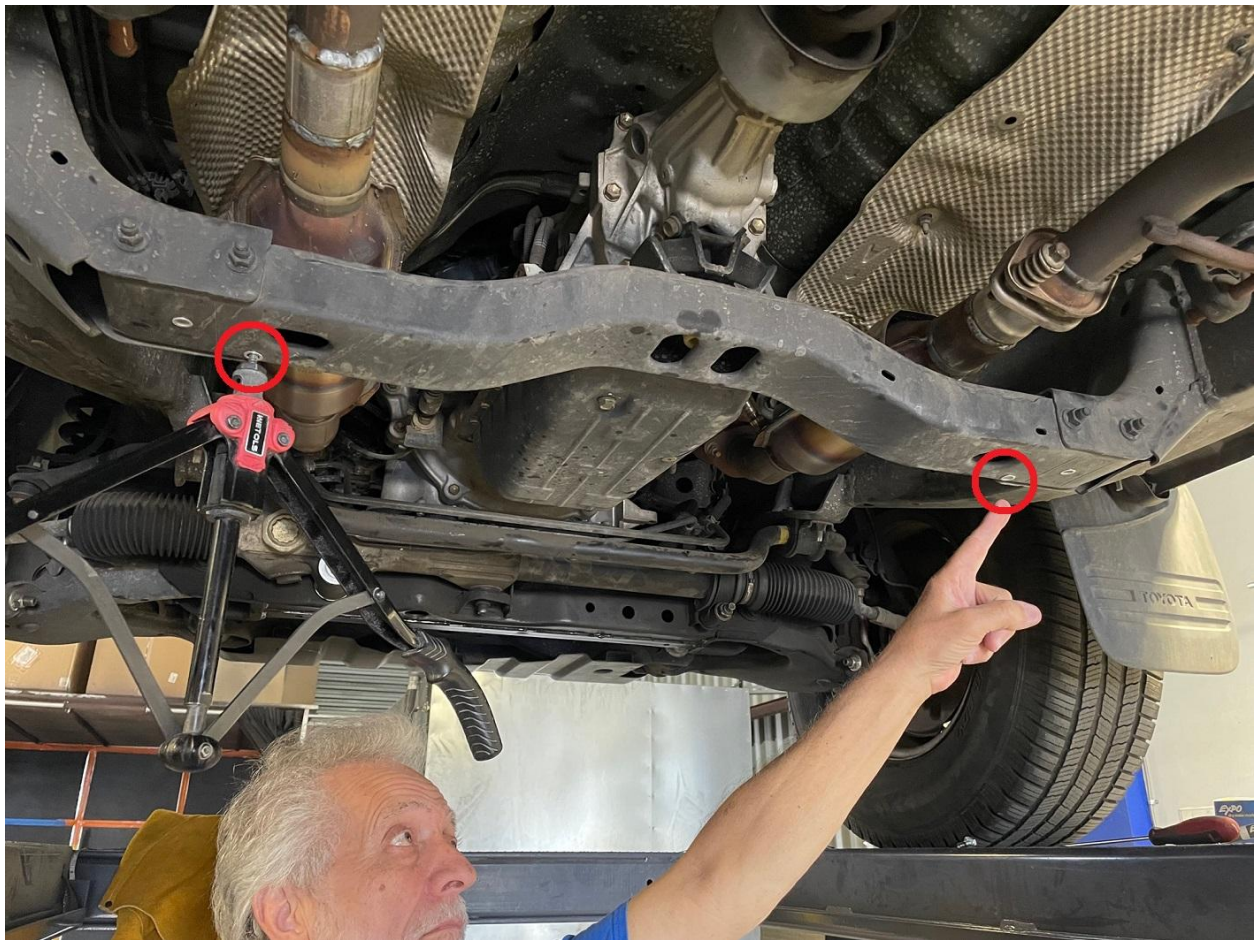
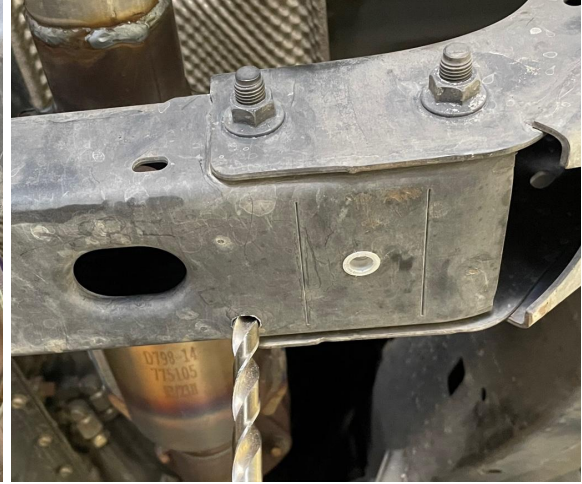




3.) Identify the two holes shown in the picture on the transmission crossmember - these are located just to the inside (and forward) of the holes from the previous step. Drill them out with a 25/64" drill bit, then install the SHORT 1/4" rivnuts into the 2 holes.

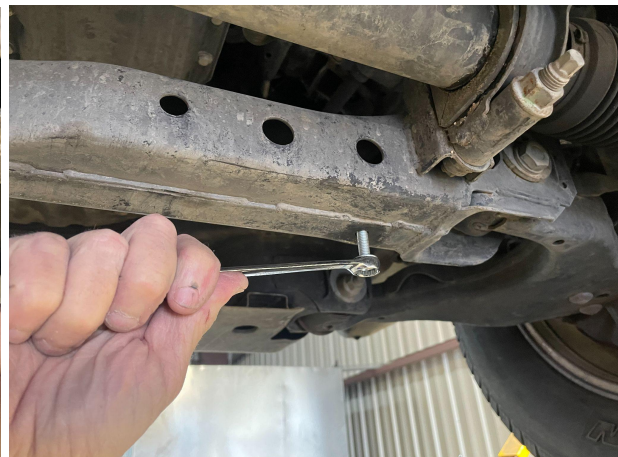
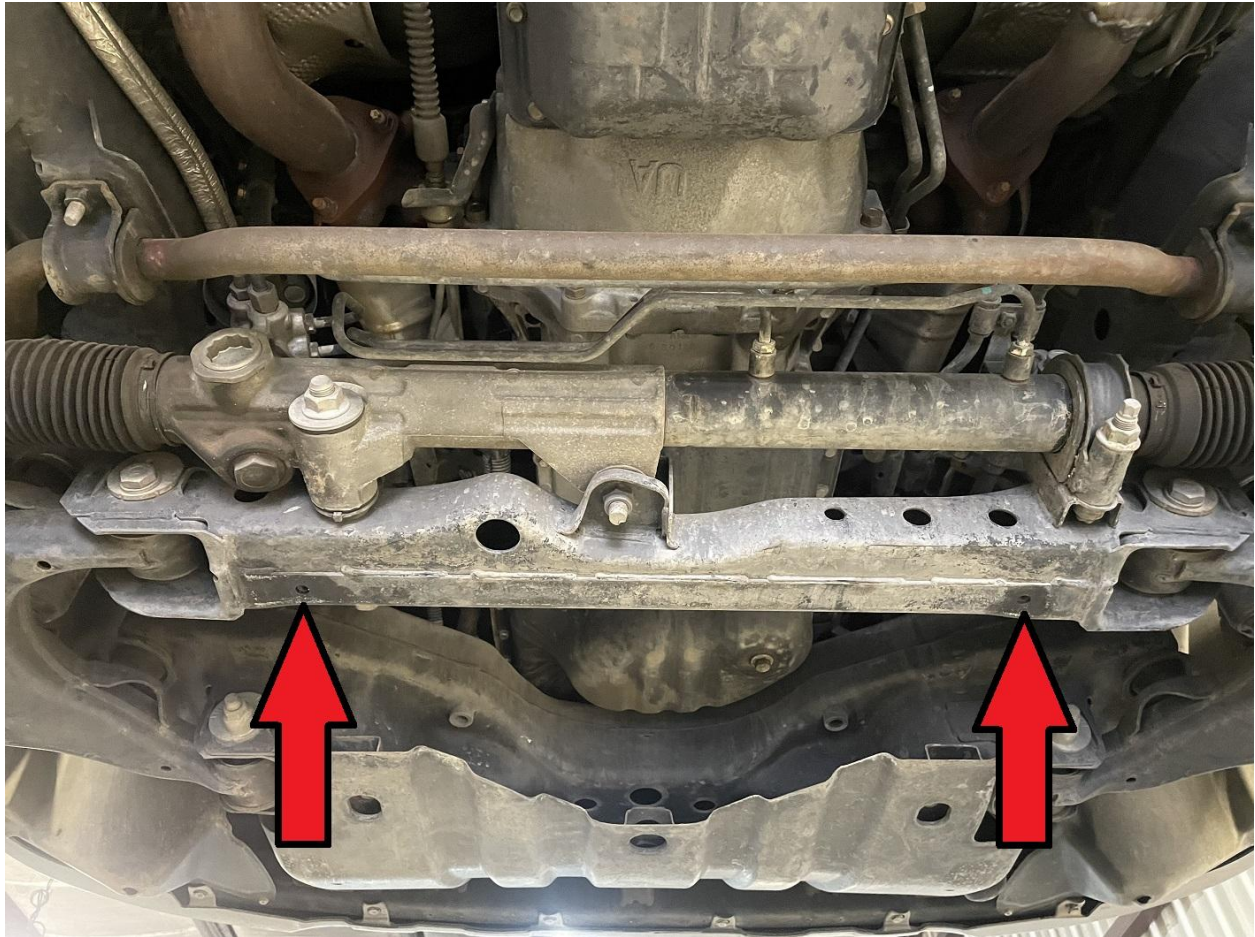






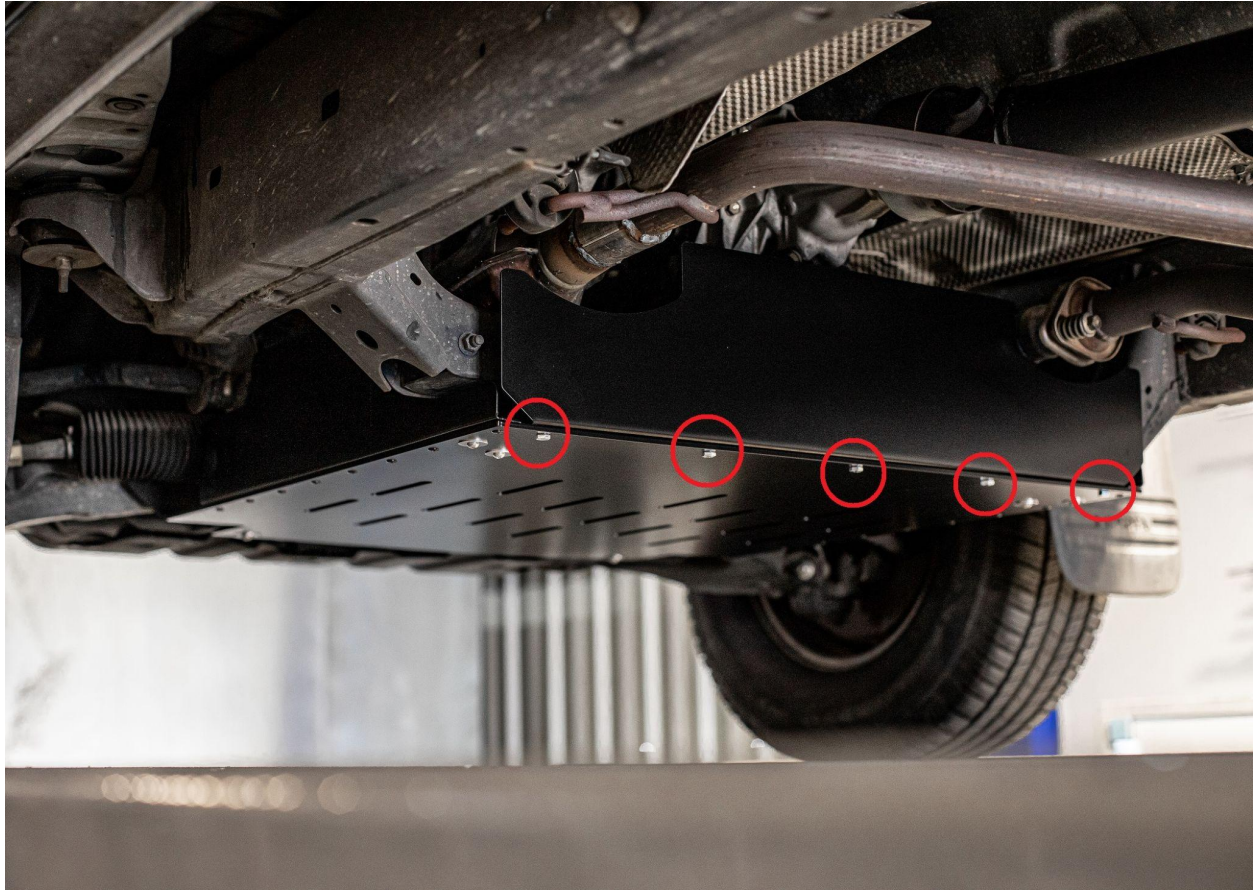


4.) Thread your M8-1.25 x 30mm HEX bolts into the OEM threaded holes in the frame located on the front crossmember. Thread in about an inch. Then thread them back out. You will be using these bolts simply to clean out the threads.





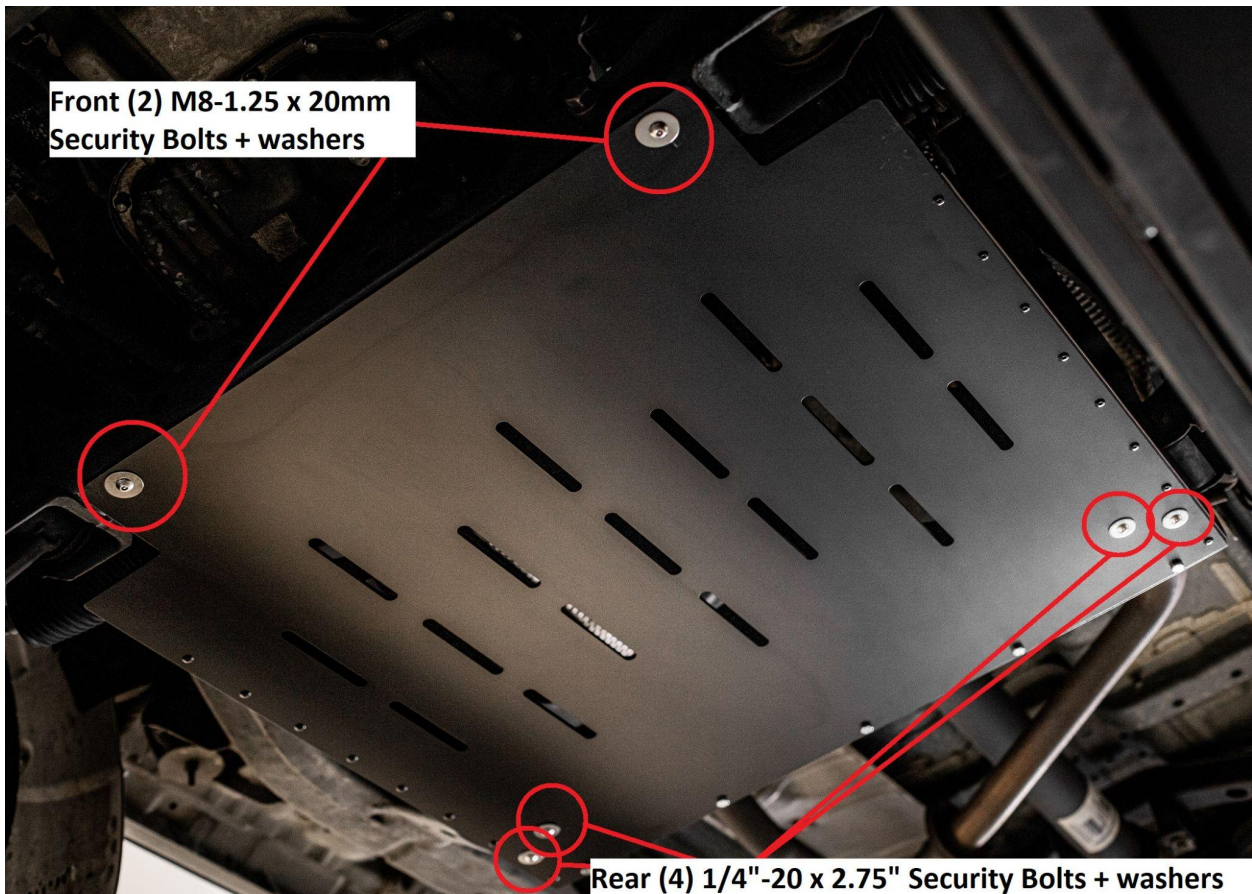
5.) Assemble your catalytic converter guard - assembly is only required for 2WD models. The rear panel needs to be bolted to the cat guard with  $\frac{1}{4}$ " bolts and nuts. Point the bolts upward. We recommend installing it before putting the guard onto the car.



7.) You can now install the catalytic converter guard onto the vehicle. Use help from another. Use BLUE THREADLOCKER on the bolt threads when installing.

Front two holes: Use two M8-1.25 x 20MM Security Bolts with the  $\frac{5}{16}$ " ID x 1.25" OD washers. The  $\frac{3}{16}$ " security bit works with these.

Rear 4 holes: Use two  $\frac{1}{4}$ "-20 x 2.75" Security Bolts with  $\frac{1}{4}$ " ID x 1" OD washers, and 40mm spacers between the guard and frame. The  $\frac{5}{32}$ " security bit works here.



8.) Double check all bolts are secure and you are done! Enjoy your new cat guard ! Feel free to tag us online using #FSPerformanceEngineering. If you have any questions don't hesitate to contact us.

PHONE: 661-809-0954

EMAIL: [costas@fspeinc.com](mailto:costas@fspeinc.com)

THANK YOU :)