



FS Performance Engineering

Toyota Corolla 2014-18 Side Skirt Extensions Installation Instructions

Tools Needed:

- 10mm socket
- 10mm wrench
- Ratchet + extension
- Clip remover (a flat head screwdriver might work)
- Drill
- 1/4" drill bit
- 1/8" drill bit
- Blue masking tape
- Pencil or marker

Included in Kit:

- (2) Side skirt extensions
- (4) Mounting brackets
- (12) M6-1.0 x 12mm bolts
- (18) M6-1.0 x 20mm bolts
- (2) M6-1.0 x 40mm bolts
- (2) 5mm spacers
- (2) Angled spacers (15mm tall on one side, 20mm on the other side)
- (32) M6-1.0 nyloc nuts
- (7) Whiznuts
- (2) 1/4" small washers
- (4) 1/4" ID, 1" OD fender washers

Steps:

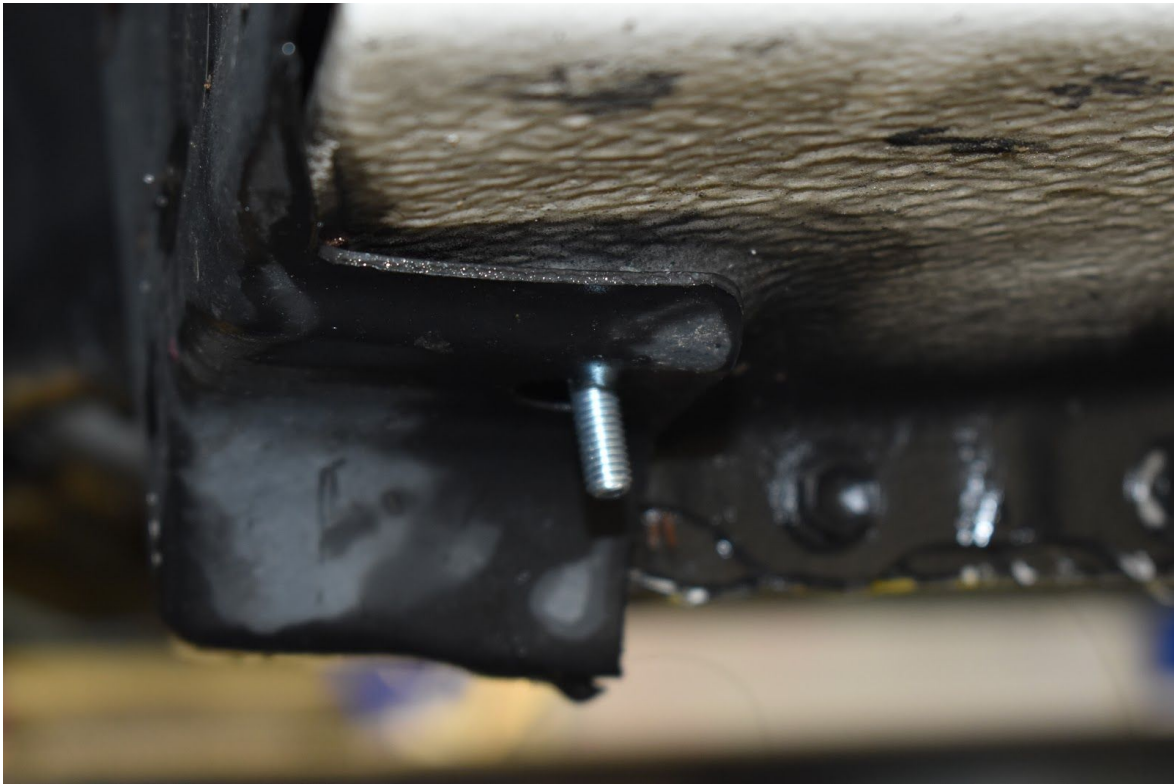
- 1.) Raise the car and secure with jack stands at the designated spots at the front and rear of the pinch weld.
- 2.) Start by temporarily assembling your side skirts and brackets with M6-1.0 x 12mm bolts and the provided WHIZNUTS. Don't use the nyloc nuts at this time. Point the bolts downward. The brackets are folded up and down on each side at 90 degrees. The folded side that has the holes will point upward, and the other side sits underneath the skirt as shown. The skirts are symmetrical. Make sure they are assembled so the brackets are symmetrical.



3.) Starting on either side of the car, remove the plastic clip found under the rocker panel toward the front. (3 pictures)



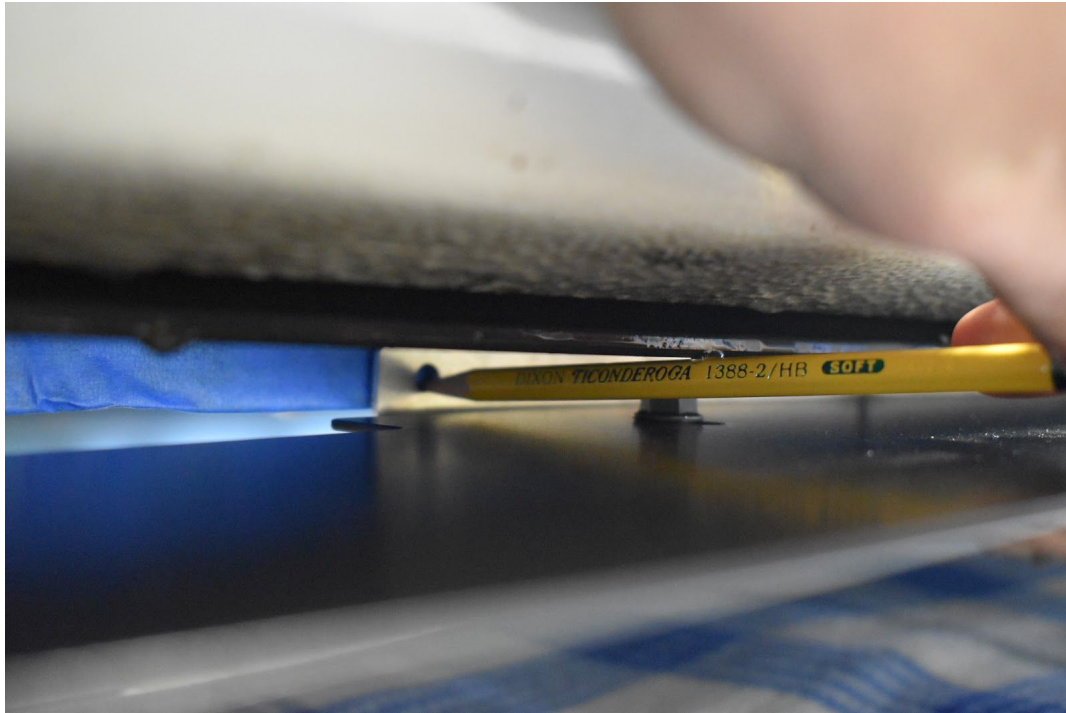
4.) Reach in from behind and push a bolt down from the top through the hole exposed in the previous step. Make sure it goes through both the rocker panel and the plastic.



5.) Install one of your side skirts onto the car onto the bolt from the previous step using a whiznut - hand tight.



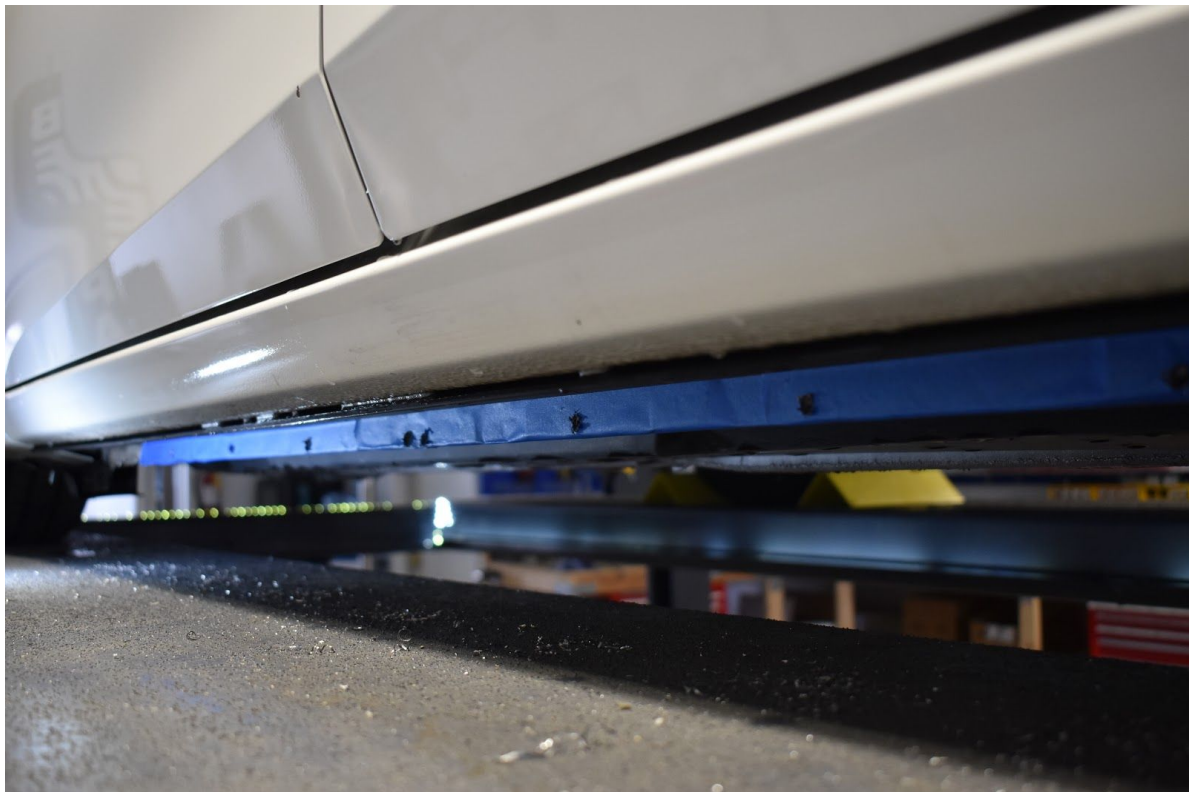
6.) Identify where the skirt brackets will be mounted to the car. Wrap blue masking tape around the pinch weld in those areas. Then with help from a friend hold the skirt and brackets against outside of the pinch weld. Use a pencil to mark through the bracket holes onto the pinch weld.



7.) Once the holes have been marked, remove the skirt from the car. Then use a sharpie or marker to remark the holes so they are 5/16" up from the bottom of the pinch weld.



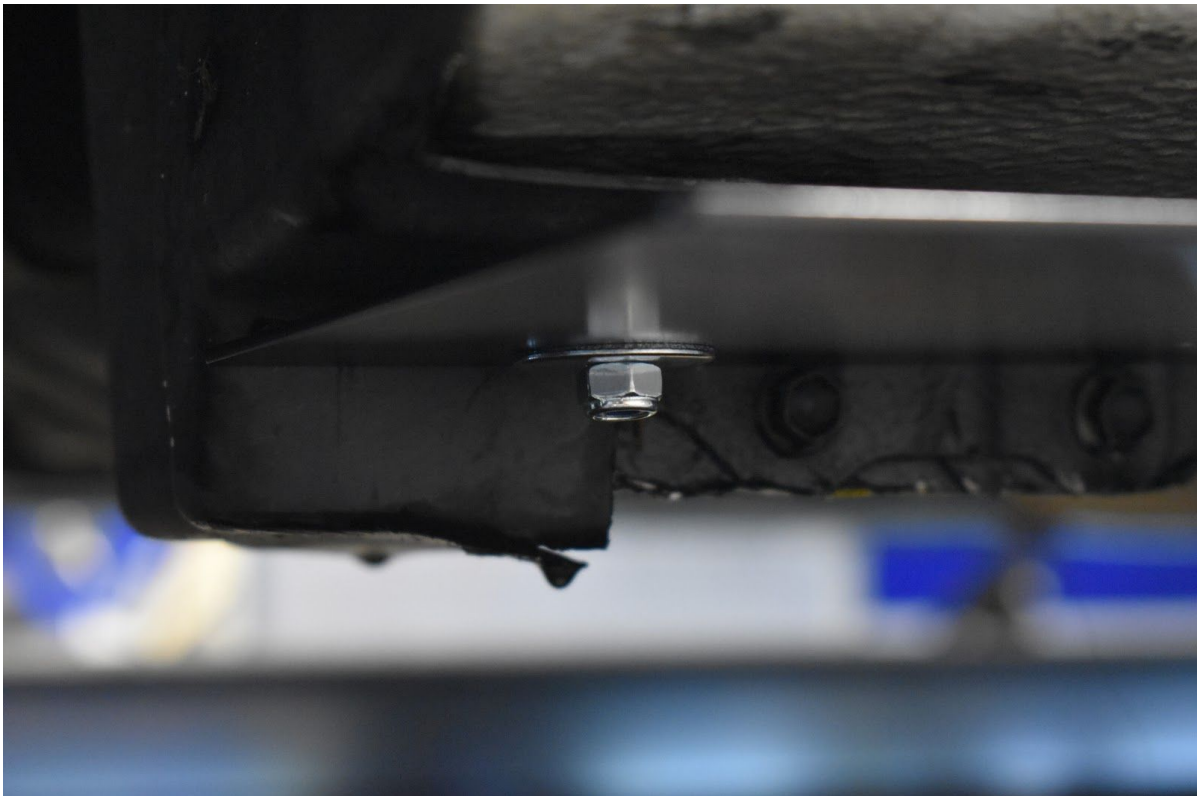
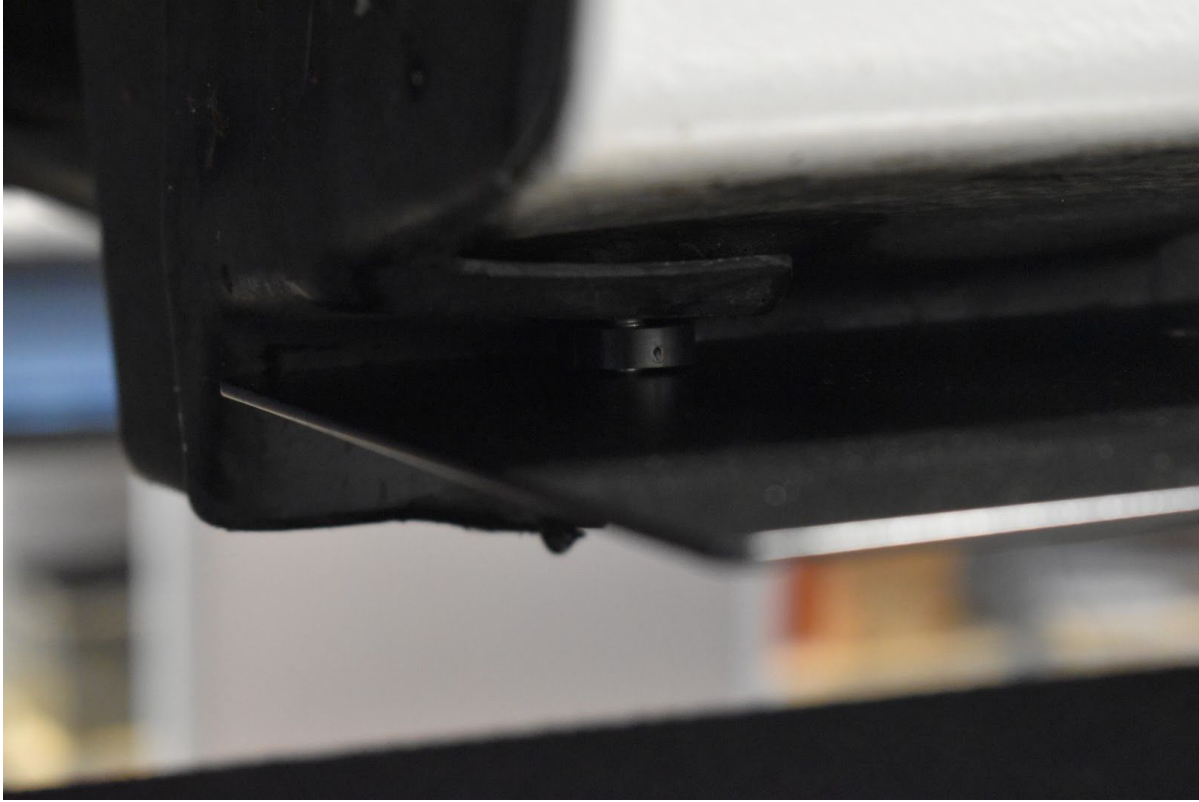
8.) Drill $\frac{1}{8}$ " holes into the pinch weld at the marked locations. Then, go back and redrill them to $\frac{1}{4}$ ". We started with a small drill bit because it helped get the holes in the correct spots.



9.) Remove the tape from the pinch welds. Then, remove the brackets from your side skirt extensions. Install the brackets onto the car so the folded part sits on the inside of the pinch weld. Use M6-1.0 x 20mm bolts, and M6 nyloc nuts. Securely tighten.



10.) Install your side skirt into the hole at the front using a 5mm spacer between the car and skirt, and a ¼" small washer and nyloc nut on the bottom. Securely tighten.



11.) Then install the side skirt onto the brackets using M6-1.0 x 12mm bolts pointing down, and nyloc nuts. Securely tighten.

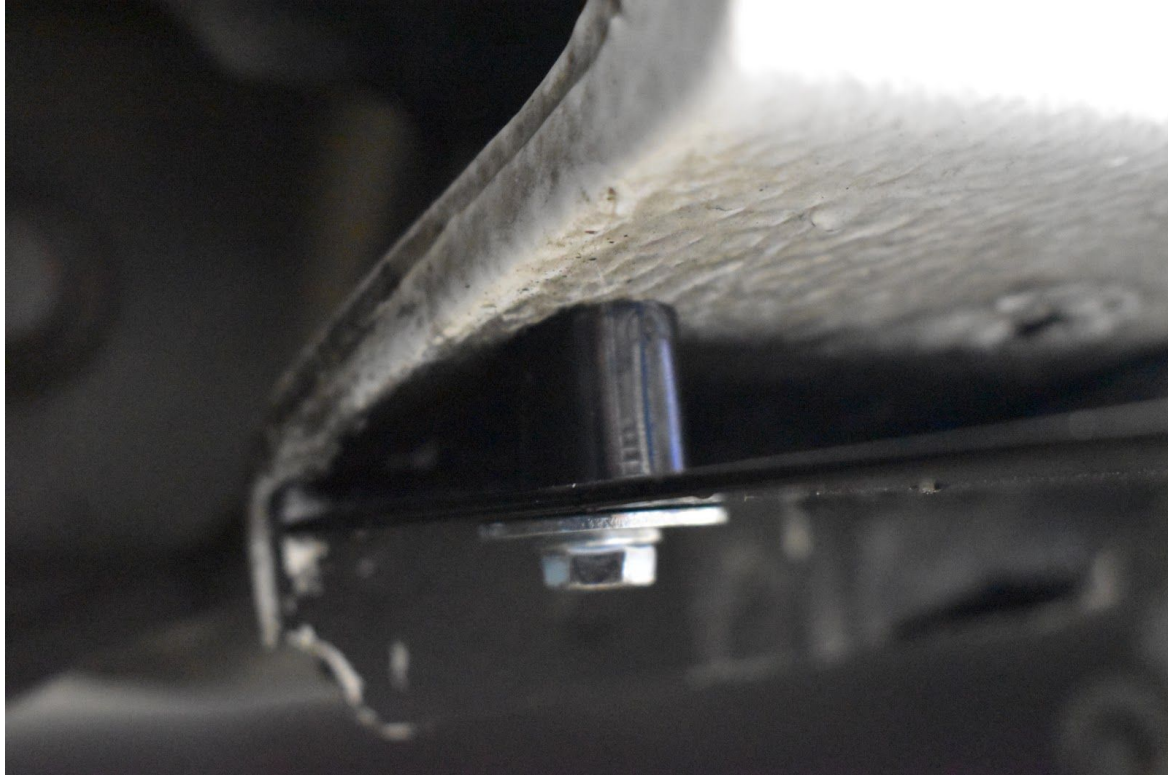


12.) Lastly, there is a hole at the rear of the skirt. You need to drill up through it with a 1/4" drill bit and make a hole in the car.





13.) Install a M6-1.0 x 40mm bolt into this hole. Use the angled spacer between the skirt and car, 1" OD fender washers on top and bottom, and a nyloc nut on top. Securely tighten.



14.) Install skirts on both sides of the car.

15.) Enjoy your new FS Performance Engineering aero! Tag us & use #FSPerformanceEngineering in the online world!!



For questions email costas@fspeinc.com or jim@fspeinc.com

Or call/text us at (661) 809-0954