



## **FS Performance Engineering**

### Toyota 86 Canards Installation Instructions

#### **Tools Needed:**

- 10mm socket and wrench
- Ratchet wrench
- Blue painter's (masking) tape
- Pen or pencil
- Cordless drill
- 1/4" diameter drill bit
- 4mm allen wrench
- Helper/friend

#### **Included in Kit:**

- (2) Canards
- (4) M6-1.0 x 20mm stainless steel countersunk bolts
- (4) M6 black countersunk washers
- (4) M6-1.0 nyloc nuts
- (4) 1/4" Small washers
- (4) Small rubber washers

#### **Additionally provided to help with install:**

- (2) M6-1.0 wiznuts

**NOTE: We used different bolts on this car for install, please use the upgraded hardware supplied.**

**Steps:**

1. To make things easier, raise the front of the car and secure with jack stands.
2. Start on the passenger side by applying painter's tape to the bumper where the canard will mount. (1 PIC)



3. With help from a friend hold the canard up against the car so it contours the middle fin as best as possible. Mark the hole toward the front of the car with a pen. Then make a hole at that spot with your drill and 1/4" drill bit. (2 PICS)



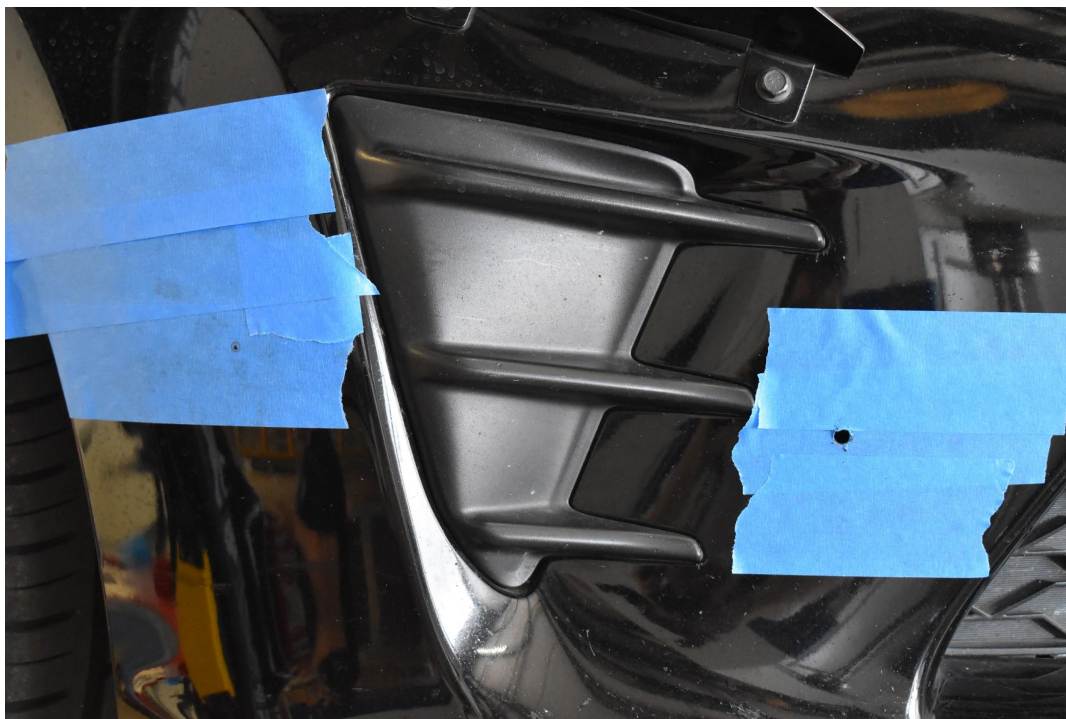


4. Underneath the front bumper remove the 10mm head bolt that helps holds the outer undertray on. This will gain you access to behind the bumper. (1 PIC)





5. Install the canard at the front hole using your countersunk bolt/washer & a WIZNUT. The WIZNUT installs MUCH quicker than the nyloc nut and is easily removable. Use the wiznut to hold the canard. Adjust the canard so it sits well up against the car and contours against the middle fin on the bumper. Mark the second hole. Remove the canard, drill the hole, then remove the tape. (3 PICS)





6. Install the canard with both wiznuts Remove the canard and reinstall it with the countersunk bolts/washers & ¼" small washers/nyloc nuts on the inside. Use the rubber washers between the tabs on the canard and bumper. (2 PICS)







7. Reattach the small undertray and then repeat the process on the driver's side of the car!

8. Enjoy your new FS Performance Engineering canards! Don't forget to send us pictures once they are installed.



For questions email [costas@fspeinc.com](mailto:costas@fspeinc.com) or [jim@fspeinc.com](mailto:jim@fspeinc.com)  
Or call/text us at (661) 809-0954