

Tesla Model X Front Splitter Installation Instructions

Professional Installation Is Recommended

IMPORTANT: Use **WD-40** on the stainless steel bolts upon installation to avoid binding nuts.

Tools Needed: *These tools reflect what is needed for splitter installation, NOT splitter rod installation. Splitter rod recommendations are separately supplied.*

- Friend/helper
- Flat head screwdriver/clip remover
- 10mm socket
- 10mm wrench
- Ratchet wrench
- Extension for ratchet wrench
- Drill
- 1/4" drill bit
- 5/32" allen head wrench
- 7/16" wrench
- 1/2" wrench
- WD-40 (or oil)
- Heat gun and isopropyl alcohol if you have edge trim

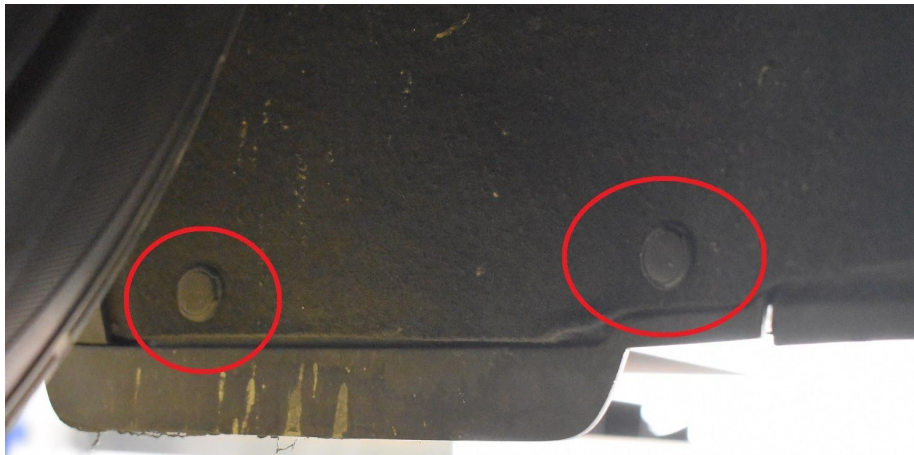
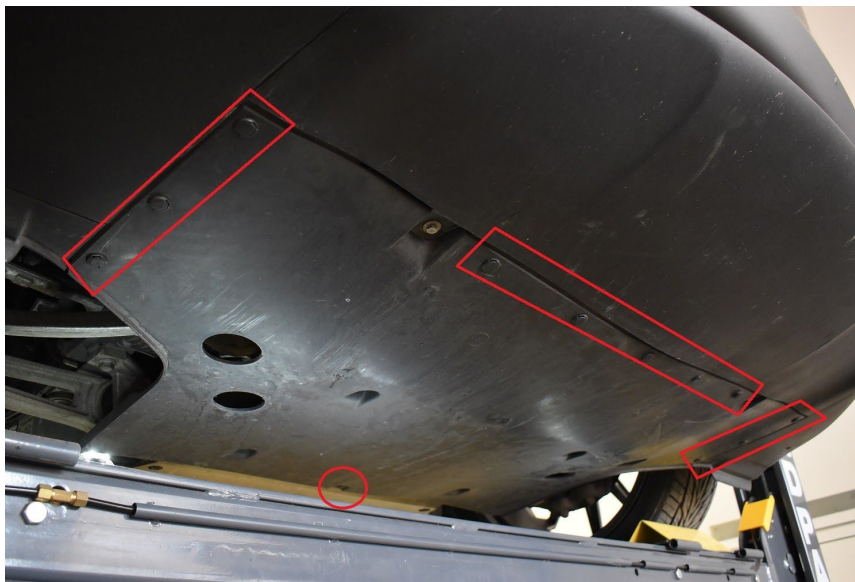
Included in Kit:

- (1) Center Top Layer Splitter
- (2) Outer Bottom Layer Splitter Pieces (symmetrical)
- (2) Flares (left & right sides)
- (1) Reinforcing bracket
- (15) M6-1.0 x 20mm bolts
- (2) M6-1.0 x 30mm bolts
- (7) 1/4"-20 x 1" Countersunk SS Bolts
- (4) 1/4"-20 x 3/4" Countersunk SS Bolts
- (4) 1/4"-20 x 3/4" Hex head SS bolts
- (15) 1/4" SS small washers
- (15) 1/4"-20 nyloc nuts
- (25) 1/4", 1" OD washers
- (7) 1/4" small washers
- (2) 1/4" lock washers

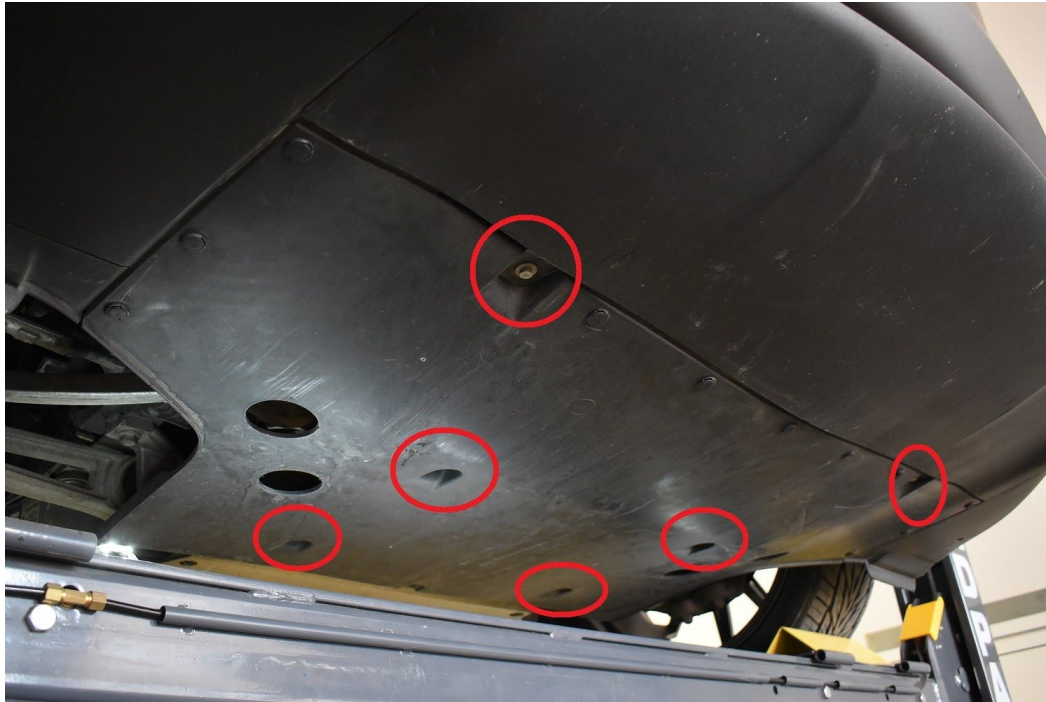
Steps:

- 1.) Raise the front of the car and secure with it jack stands. If you have a lift, use it. Professional installation is recommended.
- 2.) The Model X splitter is held onto the front bumper using OEM & drilled points, chassis points, a reinforcing bracket, & splitter rods. Splitter rods are supplied with the kit because they are necessary at high speeds and used to help level out the splitter toward the front. We ALWAYS recommend using them. When installing them use the supplied recommended tips and find your mounting point on the bumper before final installation of the splitter. These instructions do not demonstrate how to install your splitter rods - see the separate instructions.
- 3.) Remove the front under tray. It's held on with 16 clips around the perimeter including 2 in each wheel well, and 6 bolts holding it. Use a flat head screwdriver/clip remover to remove the clips and a 10mm socket/ratchet wrench to remove the bolts. See several pictures.

CLIPS LOCATIONS:



BOLT LOCATIONS:



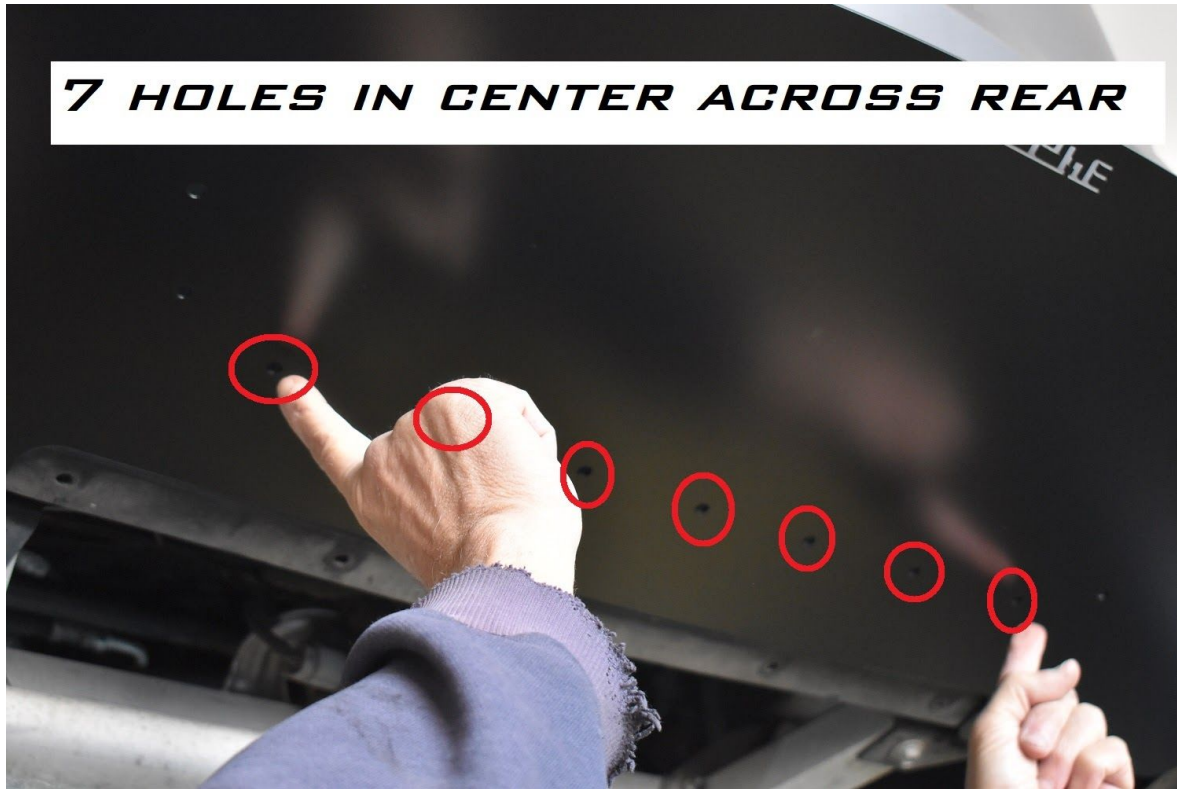
REMOVAL:



4.) Your splitter is in pieces. The top layer is the largest piece of the splitter. Install your top layer onto the 4 locations shown in the following pictures - use the supplied whiznuts in the outer two OEM holes since the splitter will need to be removed again. For temporary installation use the M6-1.0 x 30mm long bolts for the center two chassis holes with the 1" washers under the heads. For the outer two holes use the M6-1.0 x 20mm long bolts with 1" washers on top and bottom, and whiznuts on top. Assure the splitter is even left to right on each side of the bumper before snugging up the bolts hand tight.



5.) Locate the back row of holes at the center on the top layer splitter. You need to drill $\frac{1}{4}$ " holes through the splitter holes into the plastic bumper. There are 7 holes.



6.) Drill through the outer 4 holes on each side of the bumper using your 1/4" drill bit.

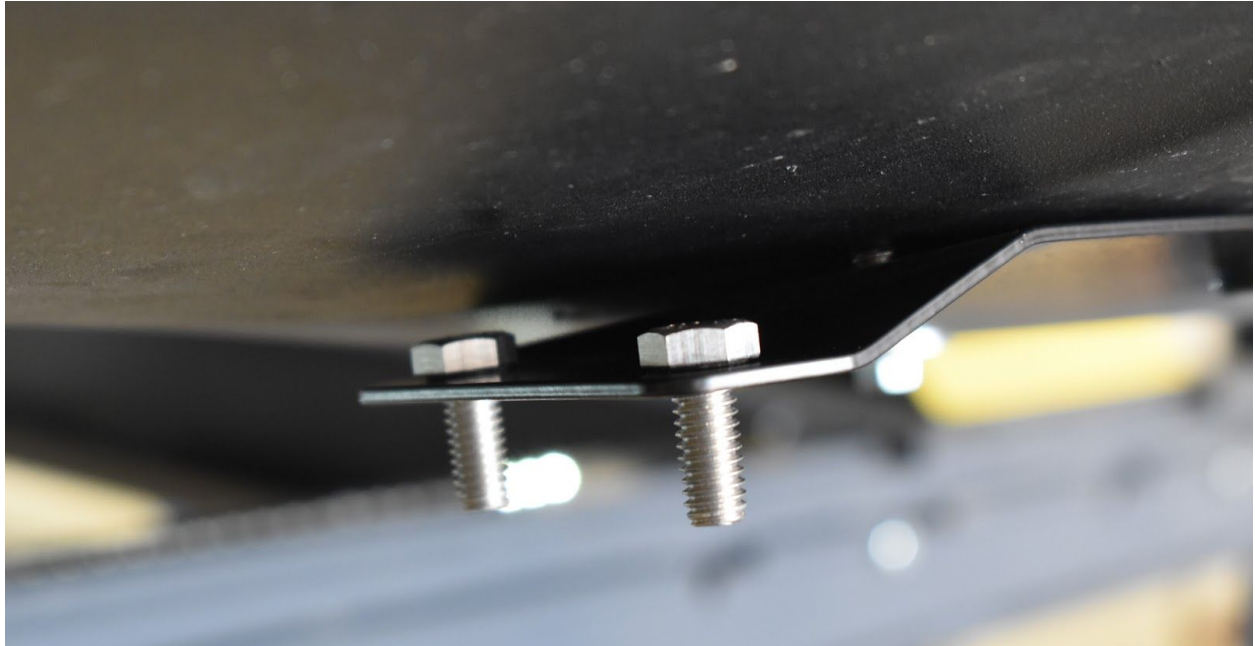


7.) Remove your top layer splitter and temporarily install your reinforcing bracket using two M6-1.0 x 20mm long bolts with 1" washers on top/bottom and whiznuts. The upward angle of the bracket matches the upward angle of the bumper. Drill through the front row of holes (there are 7).



8.) Once the 7 holes are drilled install the 1/4" hex head bolts downward through the outer holes in the reinforcing bracket. Then install your 1/4" countersunk hardware through the reinforcing bracket and bumper. Use the 1/4" washers and nyloc nuts on top. Use WD-40 or oil on the bolt threads before tightening the nuts. Securely tighten.

HEX HEAD BOLTS IN BRACKET:



COUNTERSUNK HARDWARE W/ WASHERS & NUTS:



REINFORCING BRACKET INSTALLED - USE WD-40 ON THREADS



9.) Now it is time to install your splitter onto your reinforcing bracket. Use the stainless steel $\frac{1}{4}$ " washers and $\frac{1}{4}$ "-20 nyloc nuts on the hex head bolts. Securely tighten. You will need to use the $\frac{1}{2}$ " wrench on the top of the splitter and the $\frac{7}{16}$ " on the bottom for the nuts.



10.) Install M6-1.0 x 20mm bolts into the 7 holes that are common in both the reinforcing bracket and top layer splitter. Use 1" washers on bottom, and 1/4" washers + M6 nyloc nuts on top. Securely tighten.



11.) Install your bottom layer splitter pieces onto the top layer splitter on the left and right sides. (one side shown). These pieces are symmetrical. Leave the OEM hole on each side open. Use M6-1.0 x 20mm bolts with 1" washers on bottom & top, and M6 nyloc nuts on top. Securely tighten.



12.) Install your flares. There is a left and right side. Use the remaining countersunk stainless steel bolts ($\frac{3}{4}$ " long) with the associated countersunk washer, and $\frac{1}{4}$ " SS washer + $\frac{1}{4}$ "-20 nyloc nut. Securely tighten.



13.) Reinstall your under tray using the OEM clips and bolts. Except, replace the front two bolts with M6-1.0 x 30mm long bolts. Use $\frac{1}{4}$ " lock washers and 1" OD washers under the heads. Securely tighten.





14.) If you have edge trim, use isopropyl alcohol to clean the surface and a heat gun to flex the trim around corners, then you are done!!! Enjoy your new FS Performance Engineering aero! Be sure to use #FSPerformanceEngineering in the online world.

