



FS Performance Engineering
Subaru WRX VB Rear Wing Installation Instructions

Tools Needed:

- Ratchet Wrench
- 10mm Socket
- 10mm Wrench
- Flat Head Screwdriver
- Measuring Tape (a flexible one is best)
- Masking Tape
- Marker
- Drill
- 1/8" Drill Bit (not necessary but recommended)
- 1/4" Drill Bit
- Level (not necessary but recommended)
- 1/8" Allen Key

What's Supplied:

Parts:

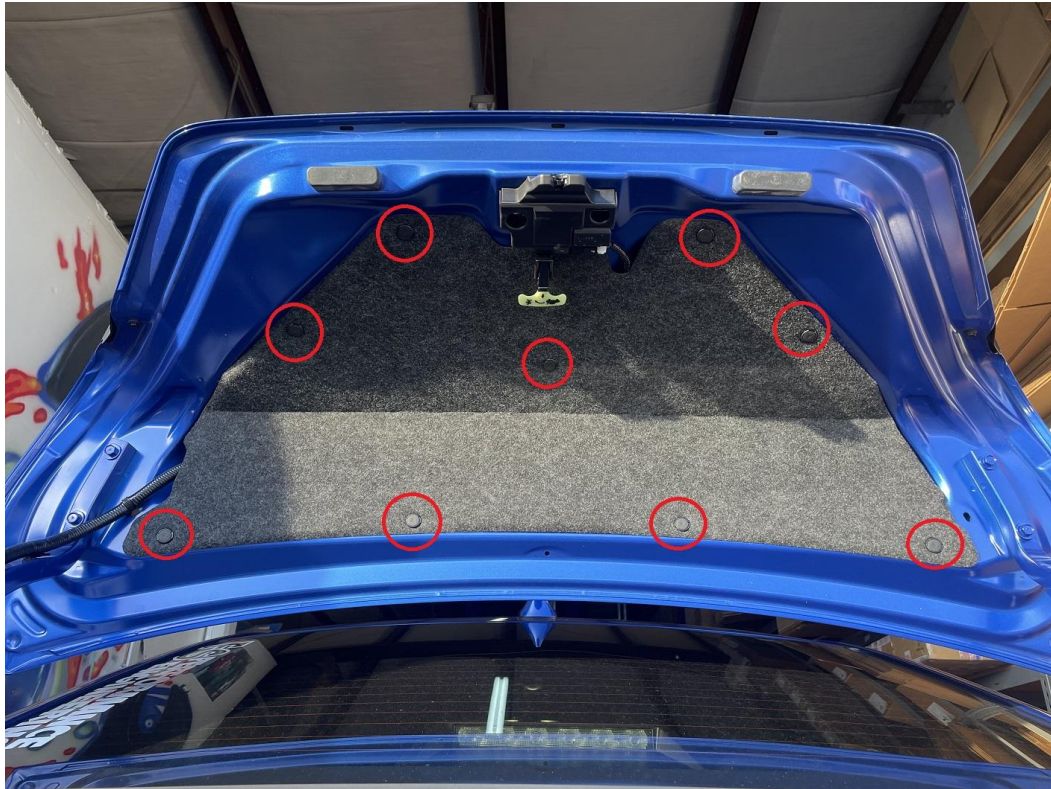
- (1) Wing Element
- (2) Wing End Plates
- (2) Wing Stands (uprights)

Hardware:

- (10) M6-1.0 x 30mm Bolts
- (10) M6 Whiz Nuts
- (10) End Plate bolts

Steps:

- 1.) Begin by opening your trunk. Remove the trunk's cloth liner using a flat head screwdriver. There will be (9) pop clips that need to be removed.



2.) Measure the distance between the inside of the wing stands that are welded onto your wing element. We measured 29". Confirm yours is the same. If it is different please let us know.



3.) Find the center of your trunk using your measuring tape. Place masking tape onto the trunk and mark the center. Then measure outwards half the distance measured in the previous step (14 ½"). Place masking tape in that approximate area on each side, then measure exactly 14 ½" outward from the center to the left and right, make your marks. Double check that the distance between your marks is 29".





4.) Place a ton of tape on the top side and back side of the trunk on both sides. This will provide both protection and a place to make a mark when positioning the wing stands.

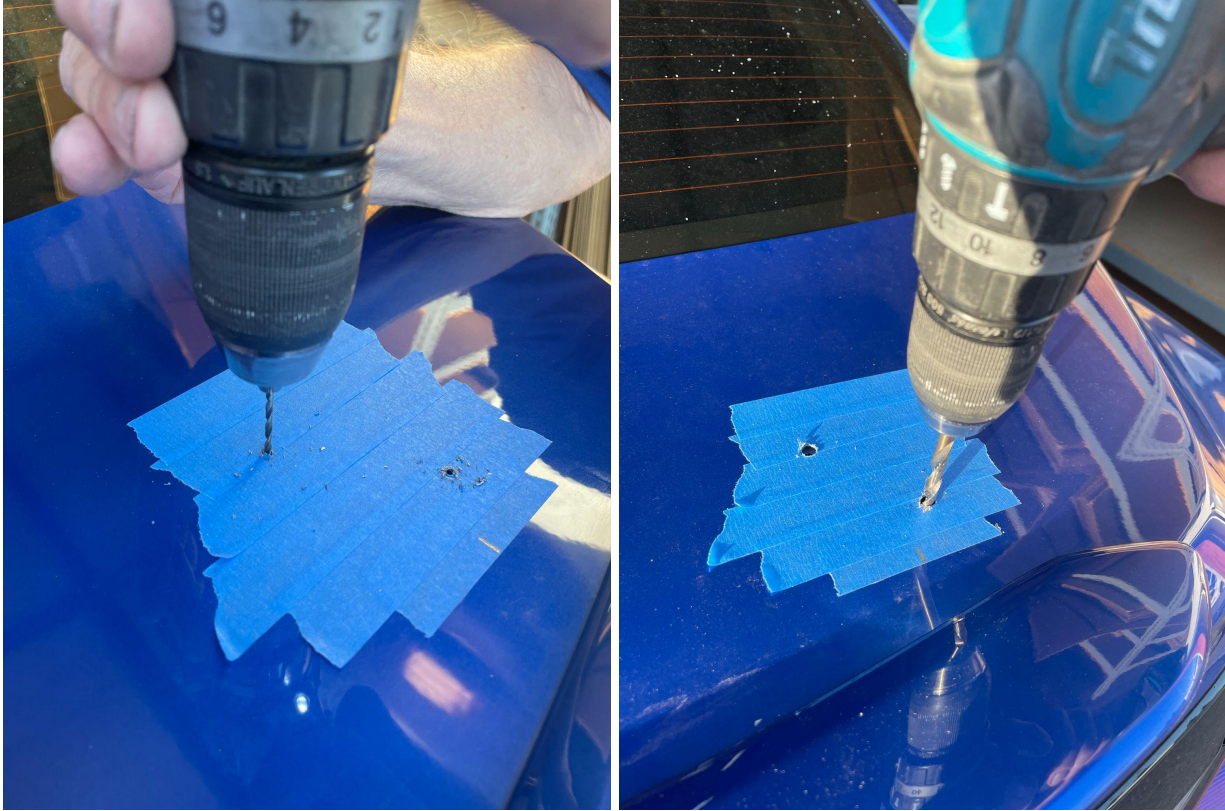


5.) Hold one of the wing stands against the trunk. The bottom tab faces outward, that is how you distinguish the left and right. ***It needs to be positioned so the outside of the stand's vertical piece is lined up with the mark you made in step 3.*** Do this by “eyeing it” from the back side. Let the bottom end of the wing stand fall naturally. Mark the holes onto the top of the trunk on both sides.

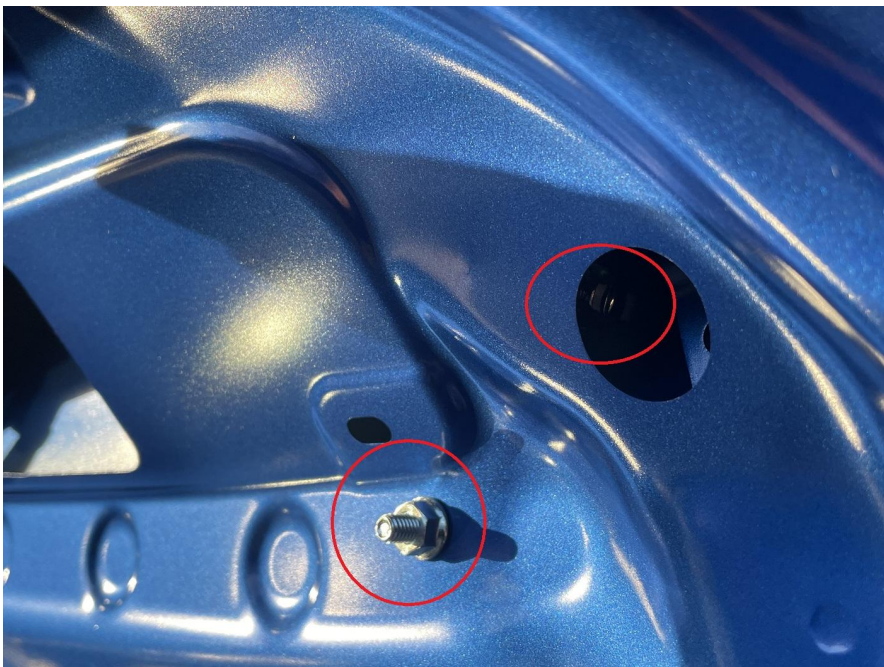


6.) Drill out the top two holes. First use a $\frac{1}{8}$ " drill bit to perfectly center the holes, then use a $\frac{1}{4}$ " drill bit to open them up. The forward holes on top of the trunk will be passing through two layers of metal when drilling.





7.) Once the holes have been drilled, assure they are clean and don't have metal protruding around them. Install the wing stands hand tight with the supplied bolts pointing downward into the trunk and whiz nuts on the inside of the trunk. Be very careful when installing the rearward hole as it is easy to drop your whiz nut inside of the trunk. Inner trunk right side shown:





8.) Bolt your wing onto the stands with 2 nuts and bolts on each side.



9.) Use a level, and a friend, to hold the wing stands vertically. Mark the bottom holes. Assure the holes land on the flat spots on the inside of the trunk, not between the 2 flat spots. This can be done with your measuring tape. If your holes are ever-so slightly off you can move them outward to the flat spots.

- Remove the entire wing and stands, and drill the marked holes first with a 1/8" drill bit, - then a 1/4" drill bit. Be sure the trunk is propped open when drilling.
- Remove your blue tape.
- Install your wing securely with all bolts facing inward.





10.) If you haven't already, install your end plates with the smaller bolts using a 1/8" allen key. CFD plates may not be symmetrical, folds go outward. Flat end plates are symmetrical.





11.) Double check all bolts are secure and you are done! Enjoy your new WRX wang! Feel free to tag us online using #FSPerformanceEngineering or #FSPEinc. If you have any questions don't hesitate to contact us.



PHONE: 661-809-0954

EMAIL: costas@fspeinc.com

THANK YOU :)