

**Kit Trim**

Base	Mounts (+Hardware), Brace (+Hardware), Rods (+Hardware), Cardboard Splitter Template	
Full	Mounts (+Hardware), Brace (+Hardware), Rods (+Hardware), Aluminum Splitter (+ Hardware), Splitter Trim	

**Before we start...****Required (Recommended) Tools****For the Splitter:**

- Ratchet
- 10mm Socket
- 12mm Socket
- 10mm Wrench
- 4mm Allen Socket or 4mm Allen Key
- Drill
- 5/16" Drill Bit

**For the Rods**

- 1/2" Wrench
- 7/16" Wrench
- 3/16" Allen Key

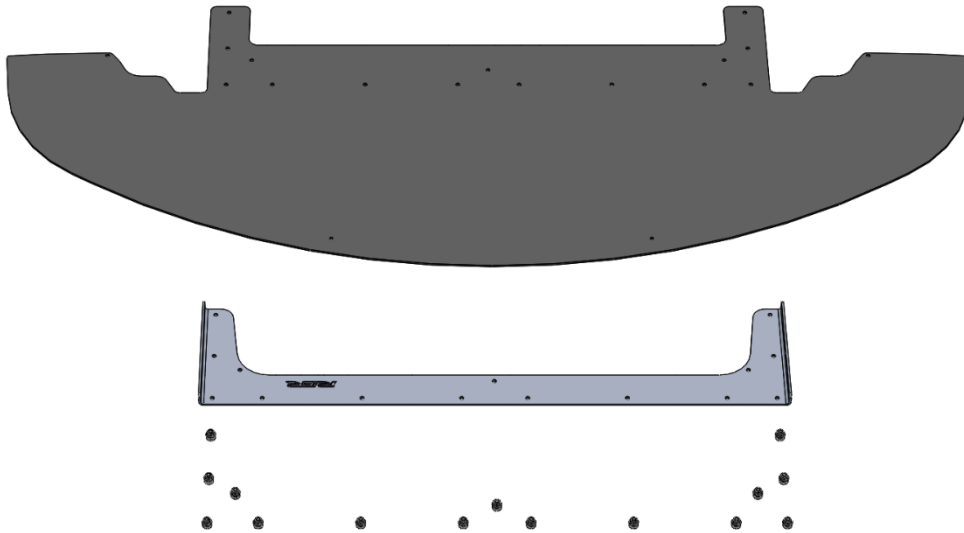
**For Everything**

- Gloves (Strongly Recommended)
- Loctite

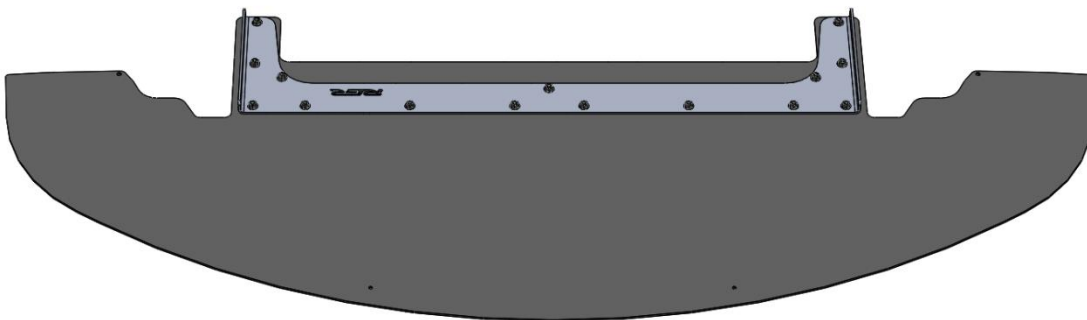
## INSTRUCTIONS

Note: Before getting anywhere near the car we have to start assembling the Splitter. Depending on your kit you will either have a ready-to-go splitter or you will have a template. If you have a template, you need to cut your splitter before going ahead, if you do not have the full kit, you will need your splitter hardware as well before going ahead.

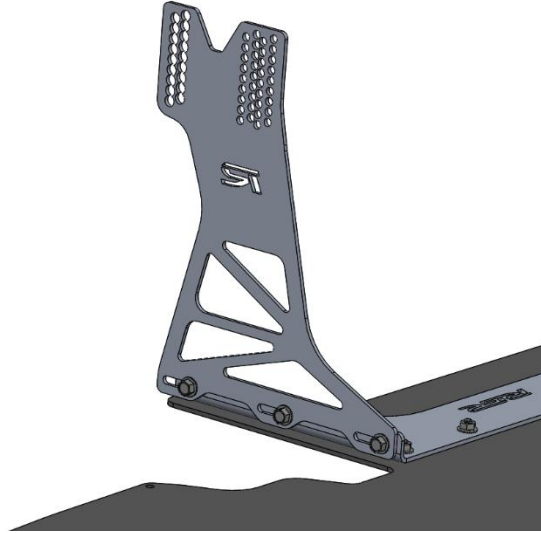
1. First get the splitter brace, the splitter and the 15 M6 button head bolts and hex nuts included in your kit.



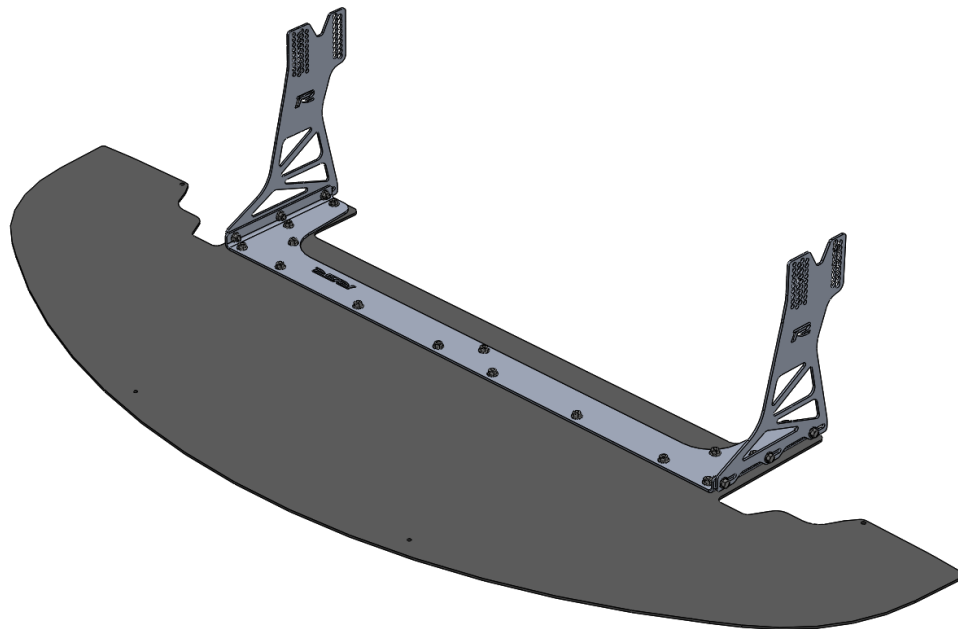
To put them together you will need your 10mm socket or wrench and a 4mm Allen. Match the holes on the brace with the holes on your splitter and tighten each bolt. Once this step is done it should look like this.



2. Now it's time to bolt the mounts. To do this you will use the 6 provided M6x16 hex bolts and hex nuts. Put together one mount, each takes 3 bolts and nuts, hand tighten them together (they have to be loose enough so they can be adjusted later in the car). To put these together you will need a 10mm socket and a 10mm wrench. Once put together the mounts should look like this.



*Note: The mounts go outside of the brace*



3. Now the kit is ready to go in the car. In order to install it, you need to have easy access to front wheel well area - depending on the ride height of your car you can get away with just turning the wheels to access the area but we strongly recommend lifting the front of the car. To do so, remove the front wheels and use jack stands along with every safety measure required to prevent the car from falling on you while working on it. DO NOT continue if you cannot work under your car safely.



4. Before bolting the splitter, the factory hardware must be removed from the mounting points. Remove the bolts that hold the factory undertray (10mm if applicable) and the front bolt for the Sway Bar Bracket (12mm). Bolts to remove pictured below.





- For cars with non-flat bumpers only  
Before installing the splitter, install the bumper to splitter seal if included in your kit.



We recommend following a route similar to the highlighted contour below. The seal comes with double sided tape, make sure you install it on the surface that will be above the splitter, if you prefer you can also install it on the RGR Splitter. Make sure to clean the area with rubbing alcohol before installation. This seal should fill the gap between your bumper and the RGR splitter.



5. Now it's time to bolt the splitter up. Put it (the splitter) under the car, it is easier if you have help from somebody but if you do not you can use a jack to lift it and get it to position.



Once the splitter is in position it can be bolted in, use the 2 provided M6x25 hex bolts and M6 washers to bolt it along with the factory front Sway Bar bolt. Your kit also includes an insert that is designed to fit in one of the two cut outs available for the Sway Bar Bolt (see below), put this insert in the cutout not being used by the Sway Bar Bolt. The insert will be held in by the Sway Bar Bolt



Insert



Once you have everything in place hand tight the bolts for the meantime as some height adjustment may be required. Do this for both sides. Once the mounts are bolted in, they should look somewhat like this.



*Note: Depending on your specific year/bumper/lip some minor undertray trimming may be required.*



6. Your splitter is now on, with the available adjustments get it to a position where the splitter is against the bumper/lip.



Now it's time to Install the splitter rods, these bolt to the bumper reinforcement which is located in the inlet area of the front bumper.



We recommend that you extend your rods first, leave them loose for the meantime. First bolt them to the reinforcement, you will need a 1/2" wrench for that. Once bolted they should look like this (see next picture).



7. Now is time to bolt your rods to the splitter. NA splitters do not come with pre-drilled holes for the rods. In order to bolt your rods, you will need to drill holes in the splitter first. For this task we recommend leaving the rods bolted to the reinforcement (like in the picture above) but loose enough so they can be moved around. We recommend two more things, one to use tape or a marker to mark the centerline of the splitter and two that your splitter is somewhat close where you want it to be. Use the marker to mark the position of the rods once they are the same distance from the center line; the exact hole position is up to you.





Once you have marked the desired position of the holes, drill them using a 5/16" drill bit. After the holes are drilled you can bolt the rods to the splitter. Bolt the rods to the splitter using a 3/16" Allen.



8. Once your splitter is where you want it to be (this is up to your personal preference and specific application) it's time to tighten everything. You will need your 10mm and 12mm socket and wrench to do both the mount and brace bolts, to adjust the rods you will need a 1/2" wrench and a 7/16" wrench. Make sure that every bolt is tight. You should be able to pull and push your car using the splitter without it (the splitter) moving. *NOTE: We recommend applying Loctite to both the Chassis and Brace bolts if you do not plan to remove it often.*



9. The final step is the splitter trim install (if included in your kit). To do this, start on one end and continue until the entire contour of the splitter is covered. Once you have reached the end, cut the trim to size. You should have trim left.



You are now done, **enjoy** your Splitter



***Disclaimer: This product is for off-road use only, use and install at your own risk.***