

FS Performance Engineering

Nissan Frontier (2005-19) 4.0L 6-Cylinder Catalytic Converter Guard & Engine Skid Plate

Installation Instructions

Professional Installation Recommended

Zero drilling is required.

Tools Needed:

- Ratchet Wrench
- 1/4" Socket
- 1/2" Wrench

What's Supplied:

PARTS

(1) Engine Skid Plate

and/or

(1) 5-Piece Cat Guard / Transmission Skid Plate

HARDWARE for Cat Guard ONLY

Bag 1

D10 - (12) 5/16"-18 x 1" Security Bolts

D35 - (1) 3/16" Security Tamper Resistant Bit

Bag 2:

D06 - (1) 5/16"-18 Nyloc Nut

D12 - (1) 5/16"-18 x 2" Security Bolt

D16 - (1) 5/16"x1.25" Washer

Bag/Item 3:

C10 - (4) M8-1.25 x 25mm Security Bolts

D32 - (1) Blue Threadlocker

HARDWARE for Skid Plate ONLY

Bag 1

C10 - (4) M8-1.25 x 25mm Security Bolts

D32 - (1) Blue Threadlocker

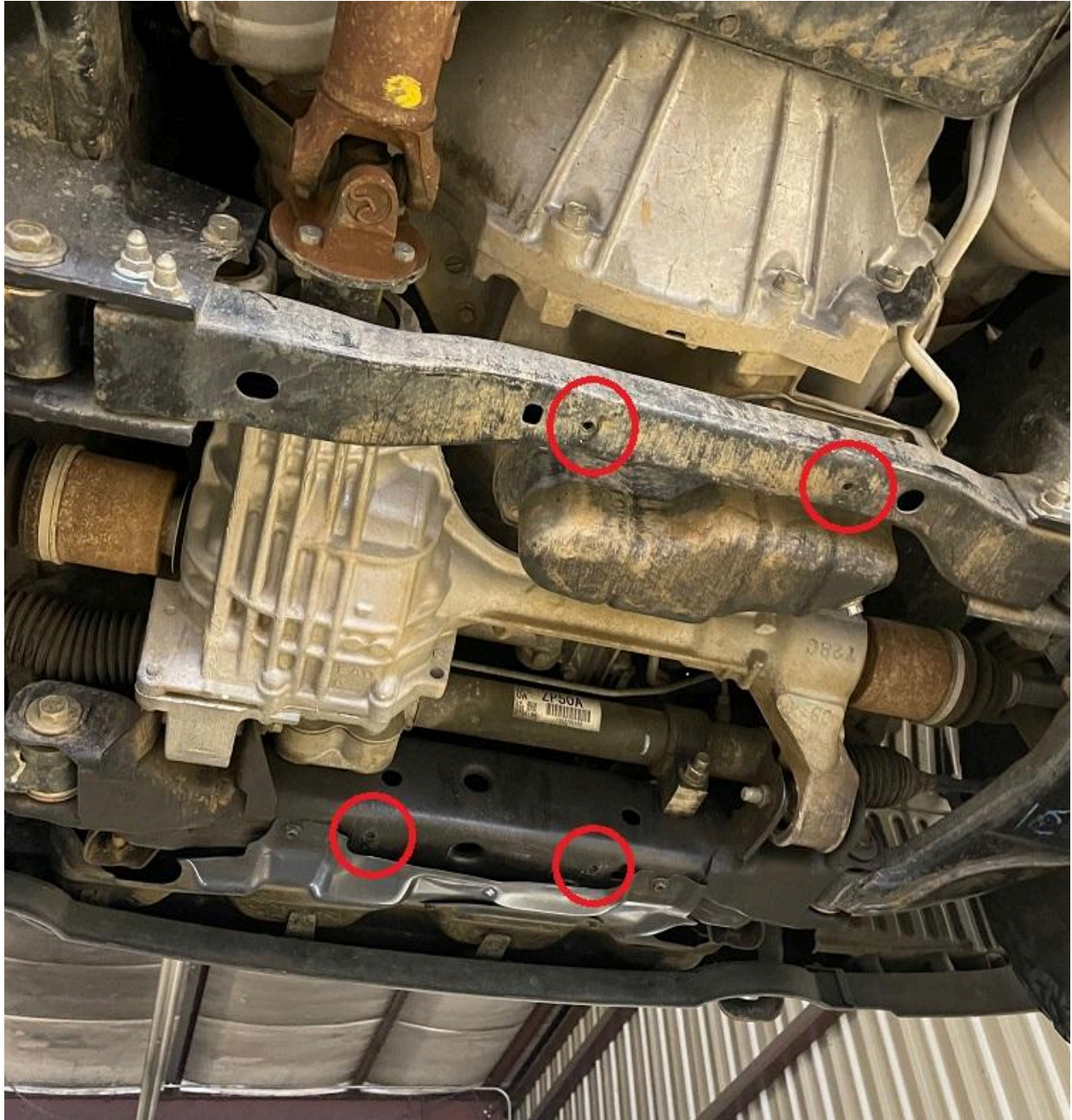
IF SKID PLATE WAS ADDED ON

Add to Bag 3 the following:

C10 - (2) M8-1.25 x 25mm Security Bolts

Steps:

- 1.) Begin by raising your Frontier. Place it securely on jack stands, or use a vehicle lift.
- 2.) We will start with the **ENGINE SKID PLATE**. If you did not purchase an engine skid plate, move please still read the next two steps.
Identify the 4 threaded holes on the frame under the engine - 2 in front, and 2 at the rear.



3.) **ENGINE SKID PLATE ONLY:** To mount the engine skid plate you will need a ¼” socket for the security bit provided. Simply bolt the skid plate onto the frame using (4) M8-1.25 x 25mm Security Bolts. We recommend using blue loctite on the threads. Don’t over tighten as you don’t want to strip the bolt heads. **YOU ARE DONE!!!!** See last step :)

ENGINE SKID PLATE IN CONJUNCTION WITH THE CAT GUARD: To mount the engine skid plate you will need a ¼” socket for the security bit provided. Loosely bolt the skid plate into the 2 front holes on the frame using (2) M8-1.25 x 25mm Security Bolts. Leave the back two bolts empty.

CAT GUARD ONLY: move to next step but read all of step 3

Mount as shown. Leave rear two holes empty if installing cat guard as well.





4.) Install your large cat guard plate.

The front two holes mount into common holes with the engine skid plate we sell. These holes use (2) M8-1.25 x 25mm Security Bolts. **Leave loose so you can mount the other bolts.**

-> If you have an engine skid plate, mount the cat guard on top of it.

-> If you don't have an engine skid plate, mount the plate directly to the frame.

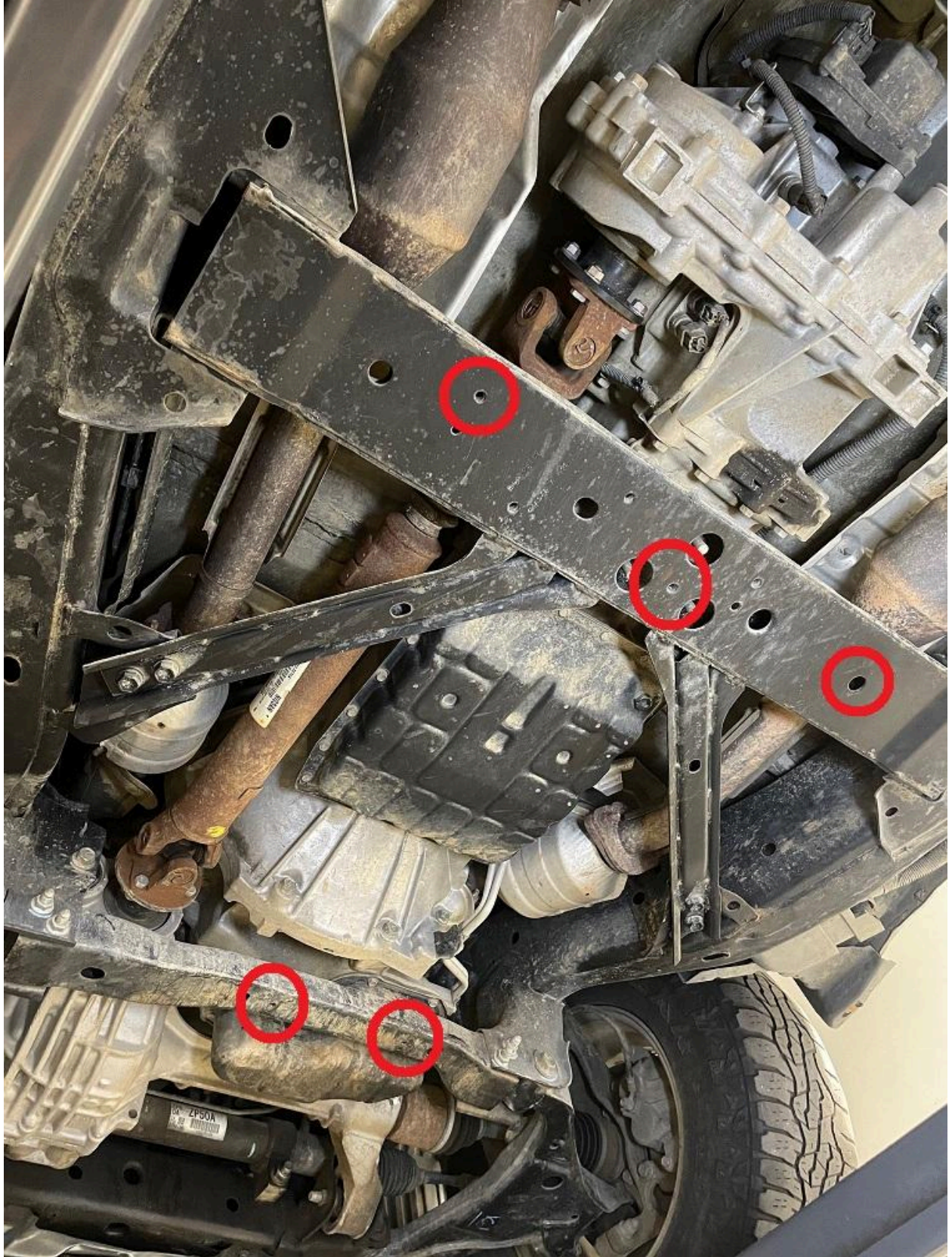
The rear left two holes also use (2) M8-1.25 x 25mm Security Bolts directly into threaded holes on the frame.

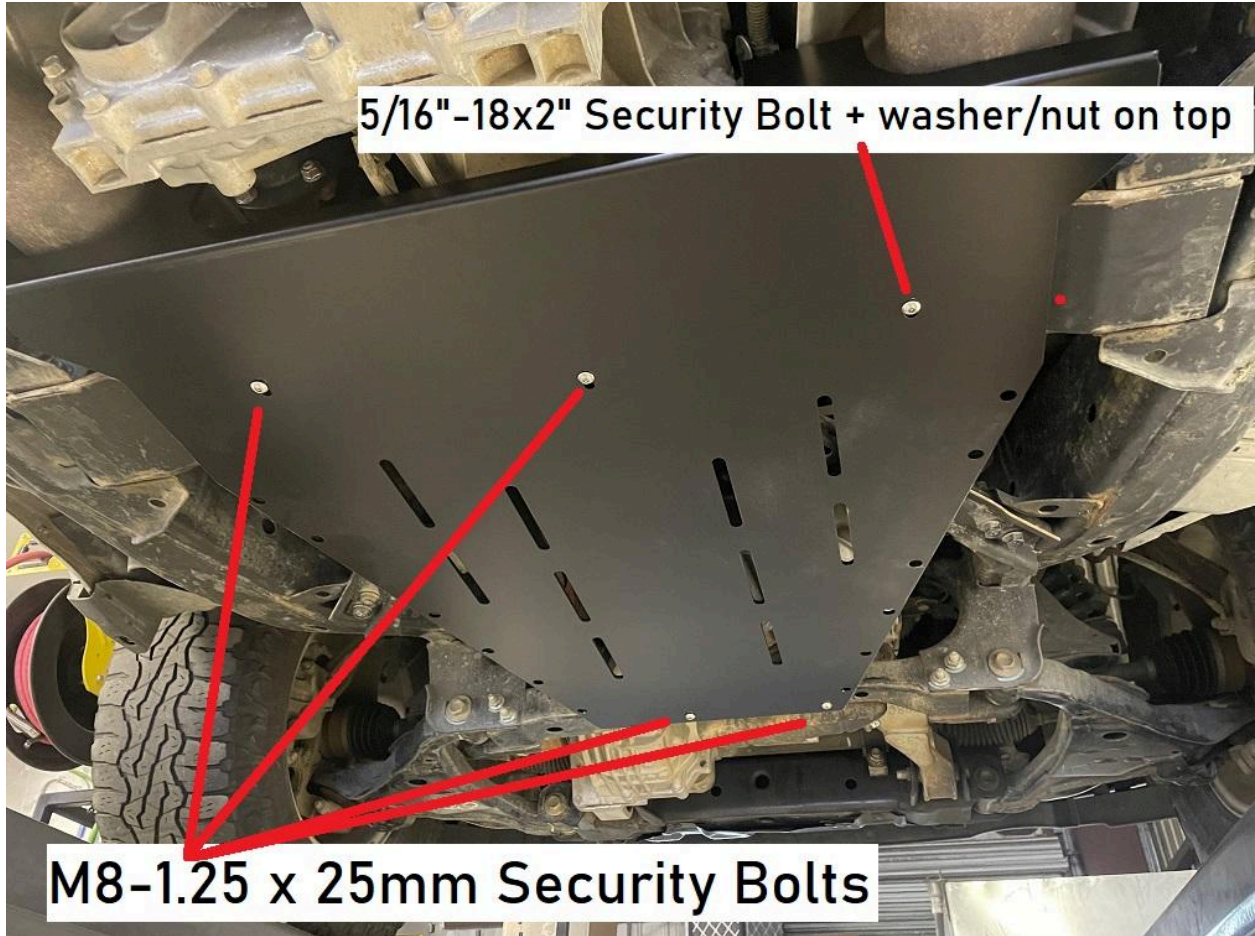
The right rear hole uses a 5/16"-18 x 2" Security Bolt from the bottom, 5/16"x1.25" Washer on top, and 5/16"-18 Nyloc Nut on top. This will require a 1/2" wrench. You will need to reach your hand above the cat guard from the right side to hold the nut on top.

-> **Use threadlocker on the M8 bolts.**

-> **Securely tighten all bolts - don't over tighten as you do not want to strip any threads.**

See pictures on next page(s).





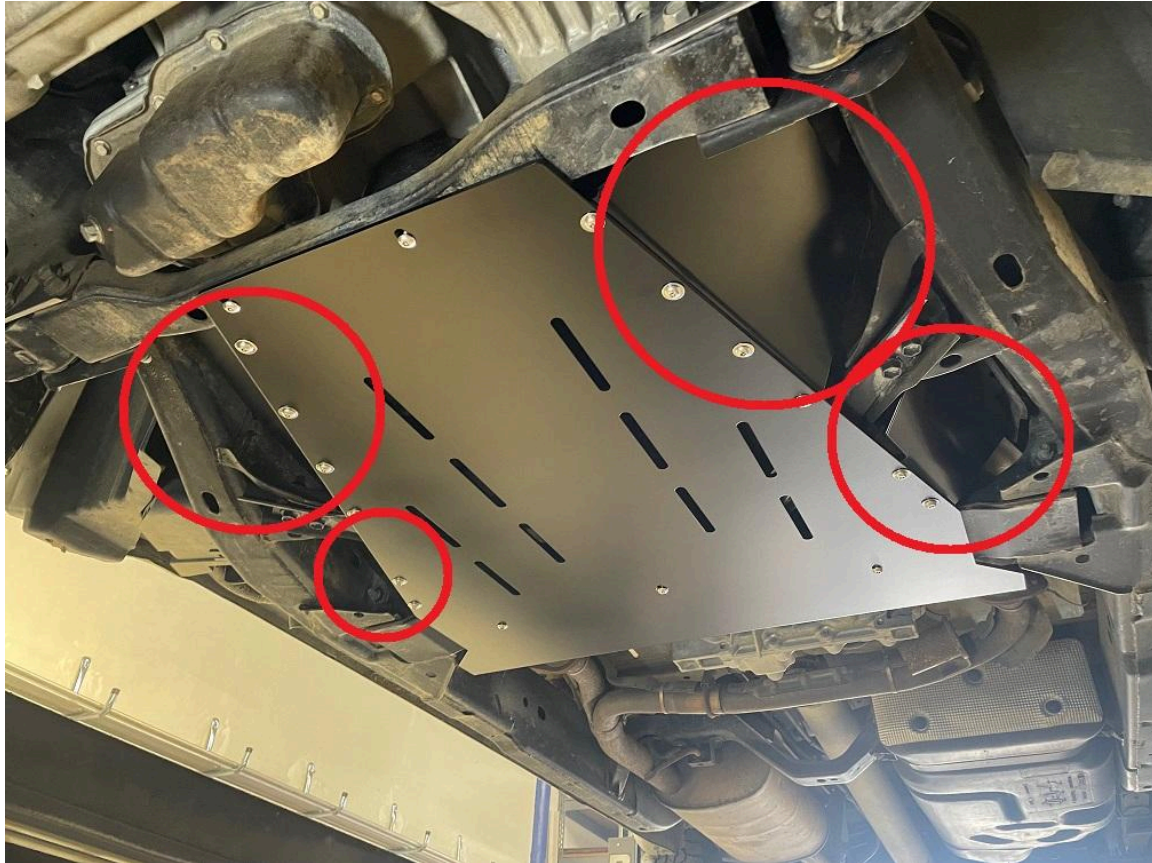
Reaching hand in from right side of cat guard:





5.) Install your side plates. The plates mount so they stick outward to cover the open areas. They are symmetrical and will only fit correctly 1 way. They will need to be slid in at an angle.

You will simply need your ¼” socket and 3/16” security bit. Use the (12) 5/16”-18 x 1” security bolts and use blue threadlocker on the threads. Again, don’t over tighten!!



6.) Double check all bolts are secure and you are done! Enjoy your new Frontier cat guard and/or skid plate. Feel free to tag us online using #FSPerformanceEngineering or #FSPEinc. If you have any questions don’t hesitate to contact us.

PHONE: 661-809-0954

EMAIL: costas@fspeinc.com