



FS Performance Engineering

1990-1993 (NA6) & 1994-1997 (NA8) & 1999-2005 (NB)
Mazda Miata NA V1/NB V3 Rear Diffuser Installation Instructions

Tools Needed:

10 mm Wrench

10 mm Socket, 13 mm Socket (NA6 Miatas), 14 mm Socket, 17 mm Wrench or Socket (NA8 Miatas), possibly a 19 mm wrench or socket (NB Miatas)

Ratchet Wrench

Extension for ratchet (optional)

Included in Kit (additional nuts/bolts may be left over):

- (1) Center diffuser
- (2) Outer diffuser panels (left and right)
- (1) Rear bracket
- (2) U-braces
- (12) Flat washers
- (16) M6-1.0 x 20 mm hex flange bolts (longer bolts)
- (6) M6-1.0 x 12 mm hex flange bolts (shorter bolts)
- (22) M6-1.0 hex flange nuts

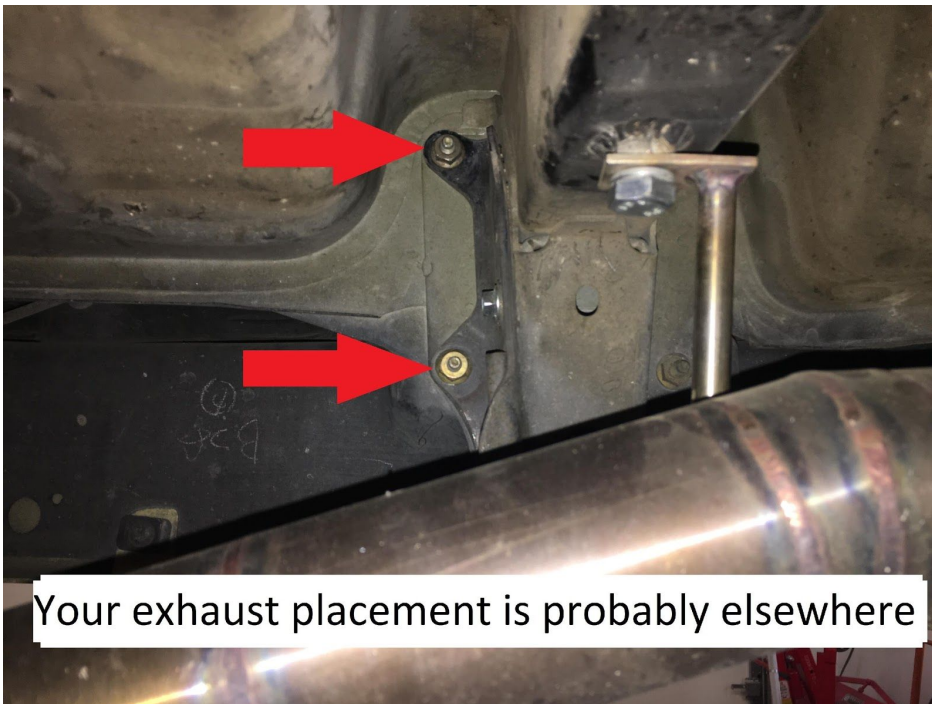
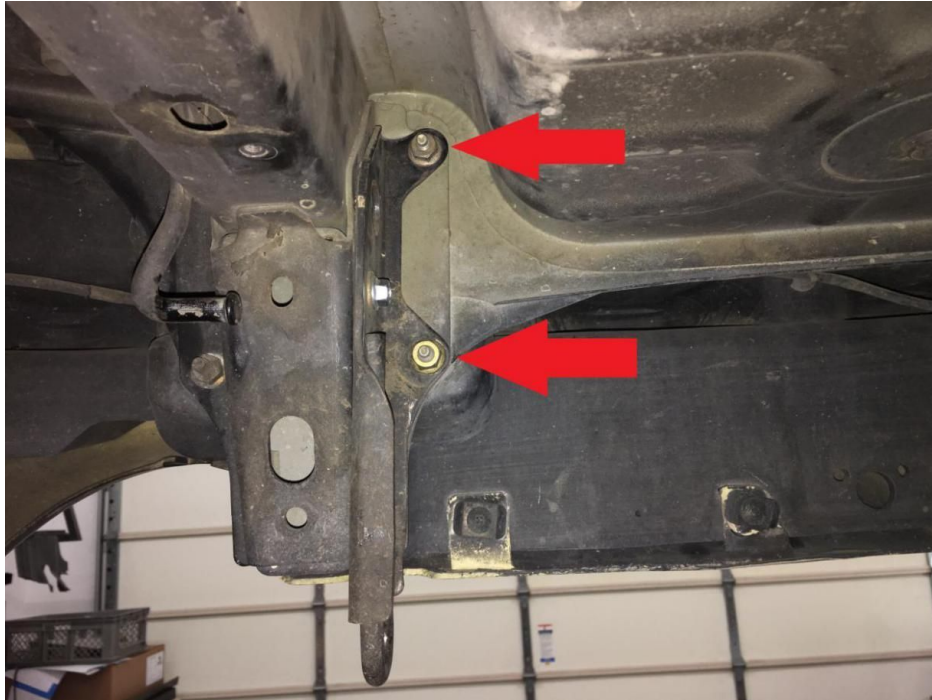
Additional items in NA6 (1990-93) Kit:

- (1) Support bracket
- (2) M6-1.0 x 20 mm hex flange bolts
- (2) M6-1.0 hex flange nuts
- (4) Fender washers

Steps:

1. Raise car and secure with jack stands.

2. Locate and remove the four 14 mm nuts holding the rear bumper and tow hooks onto the car. NOTE: This may look different on a NB Miata since the tow hooks are part of the car. You will be using the lower two holes for the NB Miata. If there are no 14 mm bolts in the lower holes, use a longer supplied bolt and nut with flat washers on each side to secure the bracket.





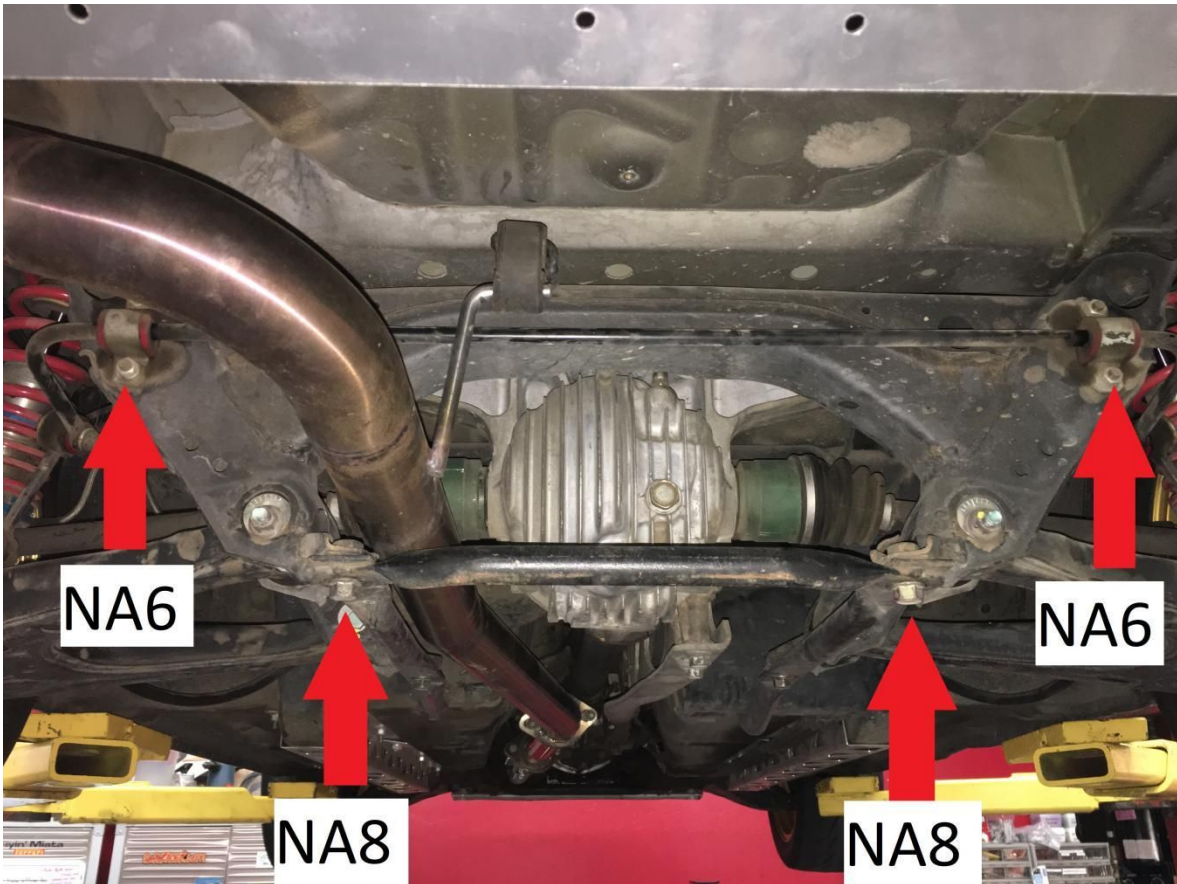
3. Install the rear bracket (see note) so the lower fold is facing toward the front of the car. Tighten the 14mm nuts securely.

Note: This diffuser was made to accommodate a car with stock tow hooks. If your car has only one tow hook, or no tow hooks, feel free to use the supplied flat washers (not the fender washers) on the bumper bolts under the bracket to evenly space out each side.



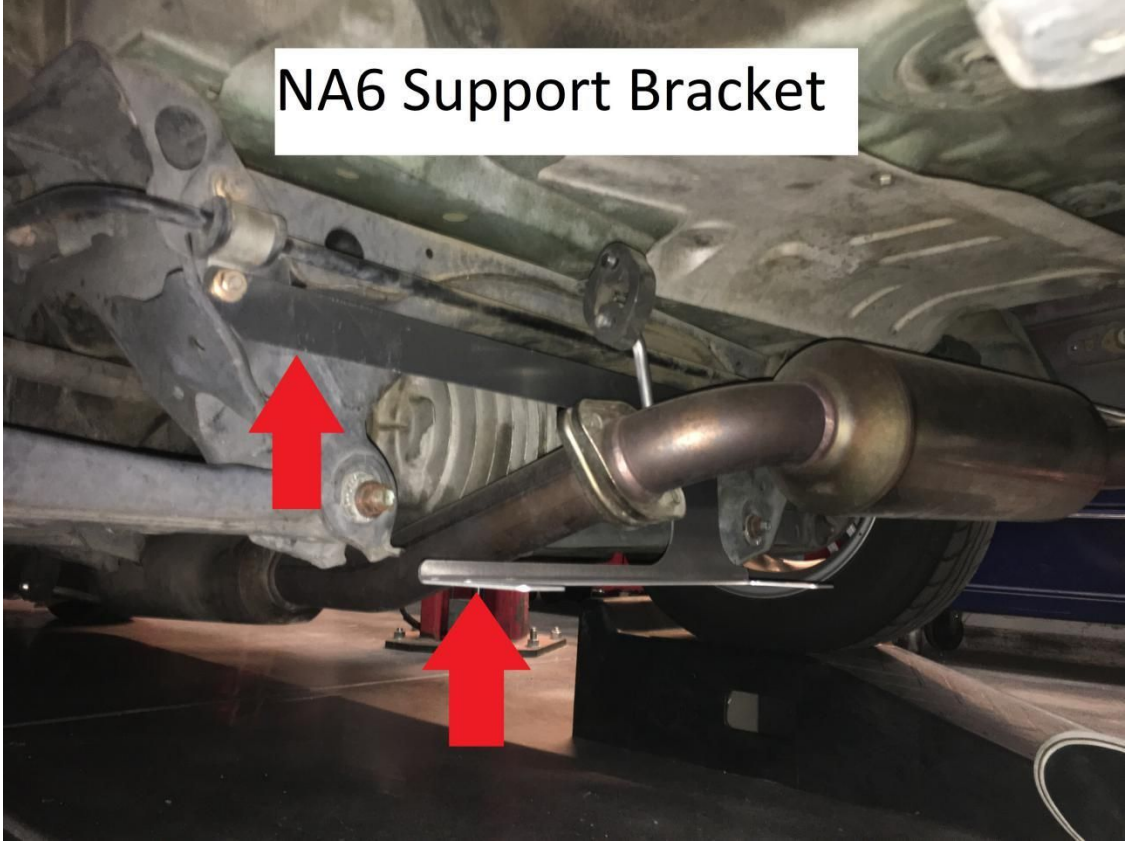
4. NA8/NB Miatas: Remove the two 17 or 19 mm bolts from the rear subframe. Set them aside.

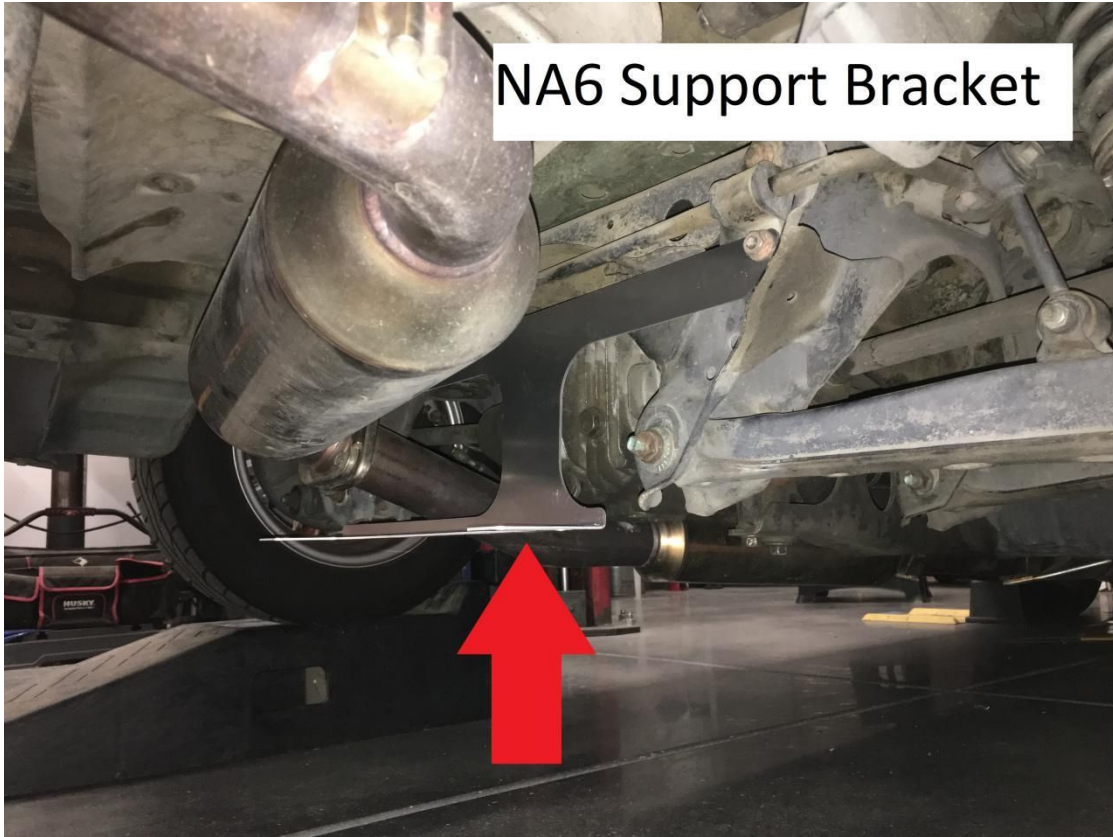
NA6 Miatas: Remove the two lower 13mm nuts from the rear anti-sway bar. Install the supplied support bracket under the 13 mm nuts and tighten securely.



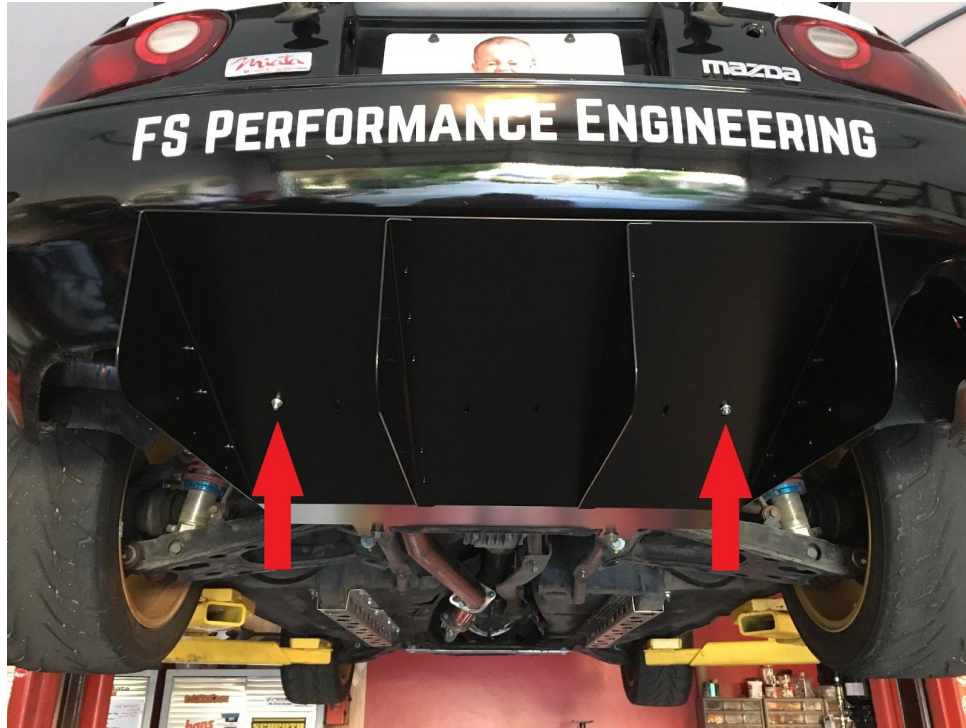
(additional pictures on next page)

NA6 Support Bracket





5. Drop two M6-1.0 x 20 mm hex flange bolts into the outer two holes of the rear bracket. Install the center diffuser with two M6-1.0 hex flange nuts and hand tighten.

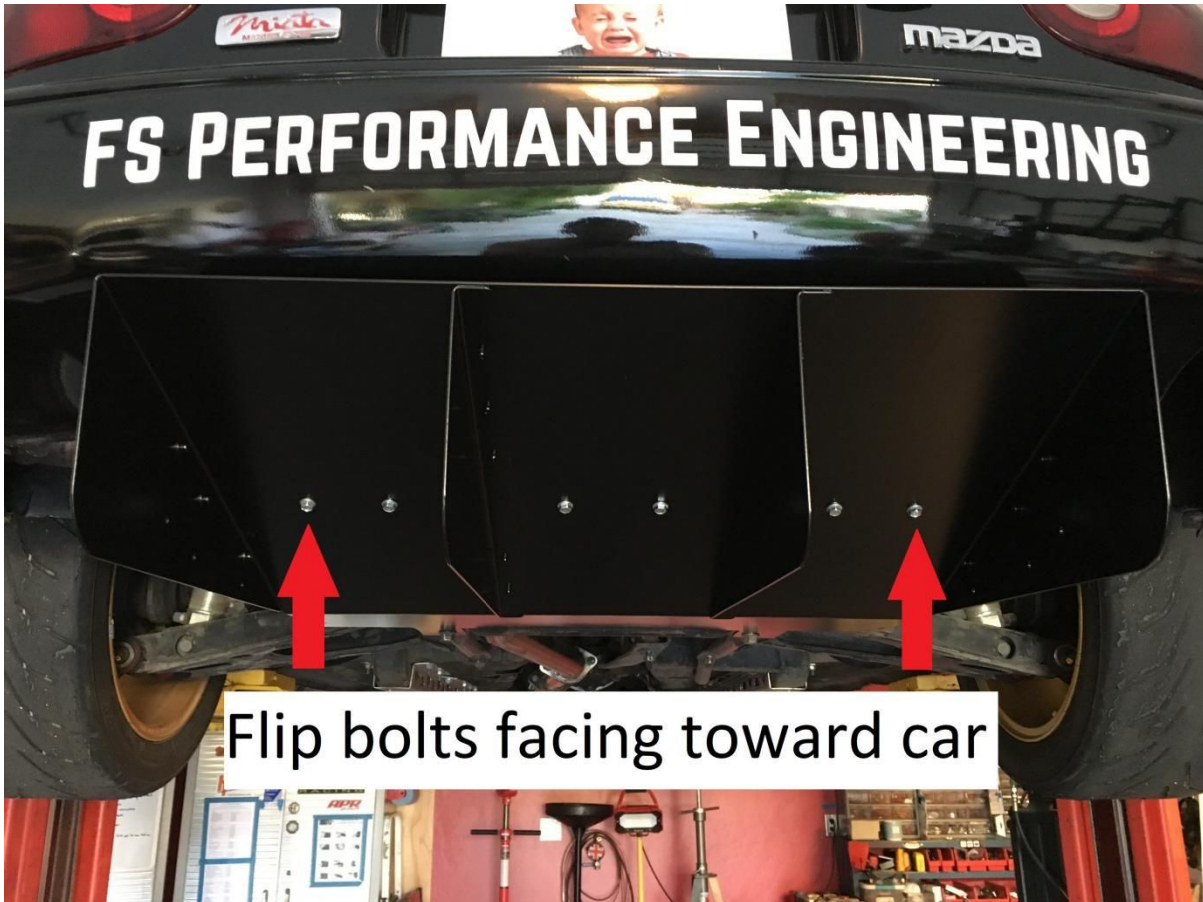


6. Install the remaining four M6-1.0 x 20 mm hex flange bolts and nuts with the bolts facing toward the car (nuts on top). Hand tighten.



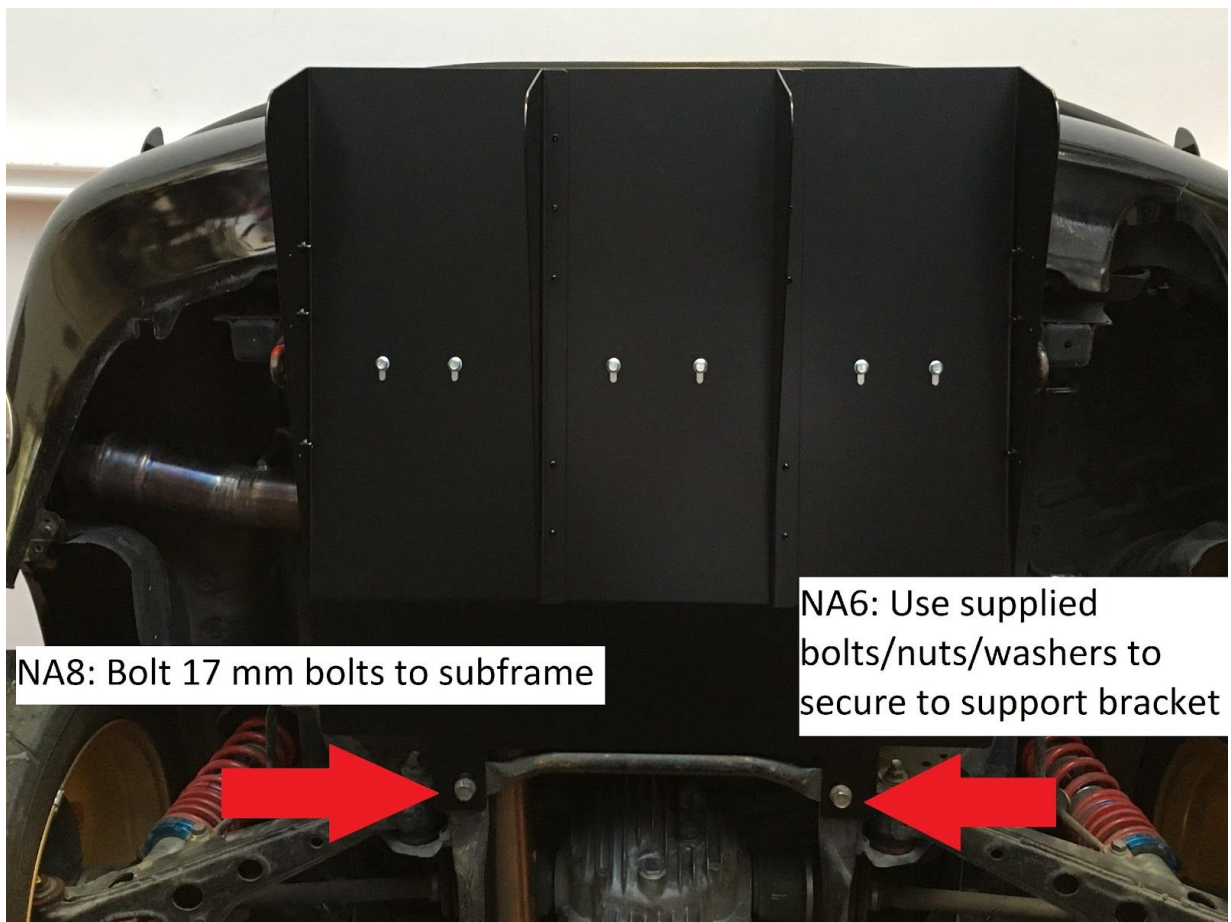


7. Remove the outer two bolts from step (5) and flip them so they are facing toward the car (nuts on top). Hand tighten.



8. NA8/NB Miatas: Install the 17 or 19 mm bolts removed in step (4) up through the diffuser and back into rear subframe. Move into desired position and tighten securely. Tighten the six bolts/nuts on the rear bracket.

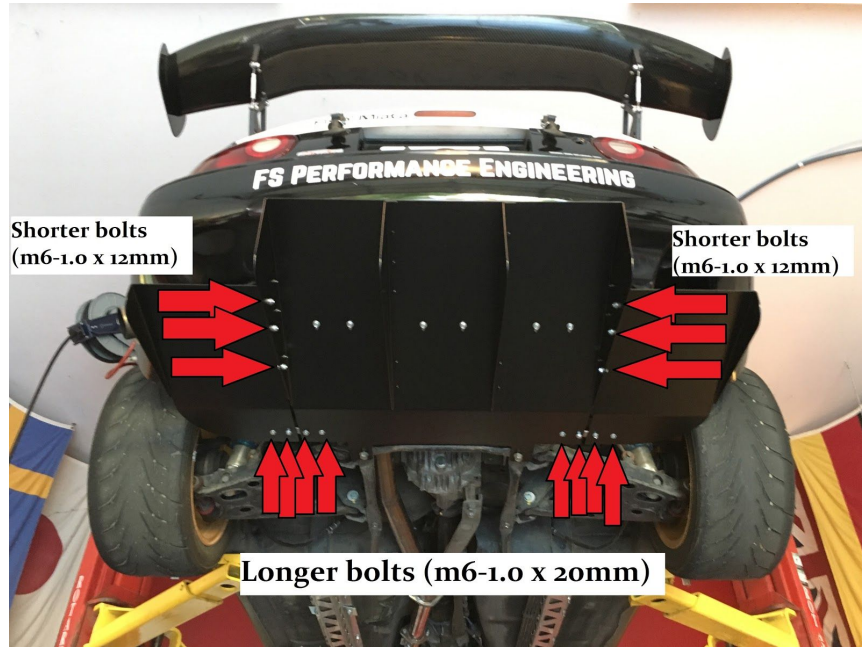
NA6 Miatas: Bolt together the center diffuser and support bracket. Install a M6-1.0 x 20 mm hex flange bolt, a M6-1.0 hex flange nut, and two fender washers (top and bottom) securing the center diffuser and support bracket on each side. Move center diffuser into desired position and tighten these bolts/nuts, and the bolts/nuts holding the rear bracket to the center diffuser.



Picture does not indicate 19 mm bolts, but they may be 19 mm



9. Install the two outer diffuser panels (left and right) using six M6-1.0 x 12 mm bolts/nuts between the center diffuser and outer panels, and eight M6-1.0 x 20 mm hex flange bolts/nuts up through the front of the diffuser through the u-braces (2nd pic) Tighten securely.





10. Make sure all nuts/bolts are tightened securely and enjoy your new FS Performance Engineering diffuser!



For questions email costas@fspeinc.com or jim@fspeinc.com

Or call/text us at (661) 809-0954