



Model 3 Side Skirts Installation Instructions

By FS Performance Engineering

Tools Needed:

- Friend/helper
- Flat Head Screwdriver / Clip Remover
- 10mm Socket
- 13mm wrench (possibly a 14mm, or 15mm as well)
- Ratchet Wrench
- Blue Threadlocker
- Boxer Cutter / Exacto Knife
- Marker
- Drill
- ½” Drill Bit
- Oil, 5/32” allen wrench, 7/16” open end wrench (if you have fins)
- Flat head screwdriver
- Isopropyl alcohol + diagonal cutters (if you have edge trim that needs to be applied)

Included in Kit:

(2) Skirts

(4) M6-1.0 x 45mm Bolts

(4) ¼” ID, 1” OD Washers

(4) ¼” small washers

(12) M8-1.25 x 45mm Bolts

(12) M8 Lock Washers

(12) M8 washers (5/16” ID, 1.25” OD)

(16) 15mm nylon spacers

Additionally Included in Kit with Fins

(2) Fins (left and right)

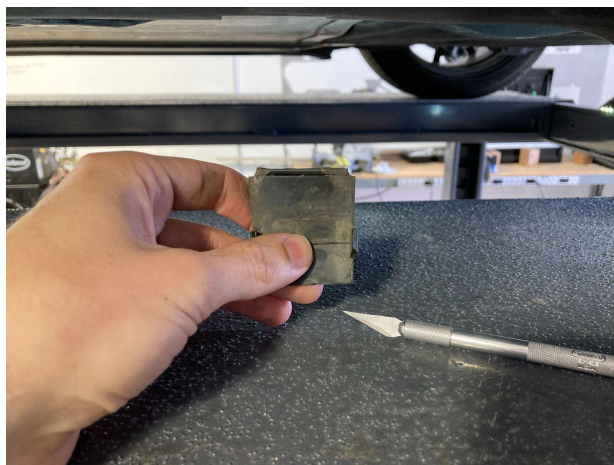
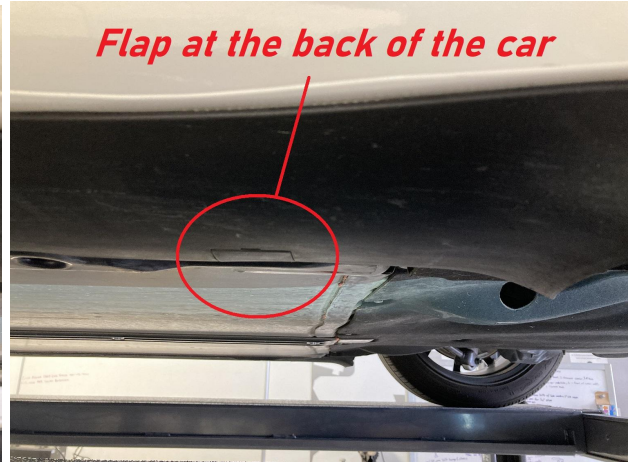
(4) ¼”-20 x ¾” Countersunk stainless steel bolts

(4) ¼” Countersunk washers

(4) ¼”-20 Stainless steel nyloc nuts **(USE OIL WHEN INSTALLING BOLTS/NUTS OR YOU WILL REGRET IT)**

Steps:

1.) Hi there. Start on one side of the car. Begin by identifying the little flaps under the OEM rocker panel. There are 4, but for some odd reason only the most forward and rearward locations were used from the Tesla factory (if your center two flaps were used and have bolts under them just remove the bolts and push the flaps back up). The flaps at the front and rear need to be folded down with a flat head screwdriver, then cut off with your box cutter or exacto knife.



2.) Now remove the bolts above those flaps. Use your ratchet wrench and 10mm socket.



3.) Now install one of your side skirts. Unless you have carbon, the skirts are symmetrical. If you have carbon skirts choose the correct side. Install the bolts in the middle of the slots securely. Make sure to adjust the skirt so the back edge of the skirt doesn't touch the aerodynamic OEM rear flap. Tip: Use something to support the middle of the skirt like a wooden block!

Hardware needed:

- (2) M6-1.0 x 45mm bolts
- (2) ¼" ID, 1" OD washers

Tools needed:

- 10mm socket + ratchet wrench + friend/helper



4.) You must now mark the 6 slots in the side skirt onto the rocker panel. Use a marker (like a sharpie).



5.) Easy stuff. Now remove the skirt, then raise your car onto jack stands on the side you are working on. It must be high enough that you can drill $\frac{1}{2}$ " diameter holes in the middle of the slots you just marked. **THEN DRILL $\frac{1}{2}$ " HOLES IN THE MIDDLE OF THE SLOTS. NOTE:** Keep in mind that there are OEM bolts above the slots. We recommend placing a small piece of wood, or something flat, above the OEM rocker panel so that when you drill through you don't smash your drill bit into the bolts above. (see all pics)

PIC OF US ABOUT TO DRILL, WITH WOOD JAMMED ABOVE LIKE WE SAID:



DRILLING RECKLESSLY:



HOW IT LOOKS ABOVE ROCKER PANEL:



6.) Good job. Now above those slots are OEM bolts. Remove them using your 13mm wrench (or 14 or 15mm, we blanked out and forgot to record the size).





7.) Once the 6 bolts are removed you can take the car off of jack stands and reinstall the side skirt *loosely* into the front and rear holes. This time use ¼” lock washers as well, and 15mm spacers between the skirt and rocker panel.

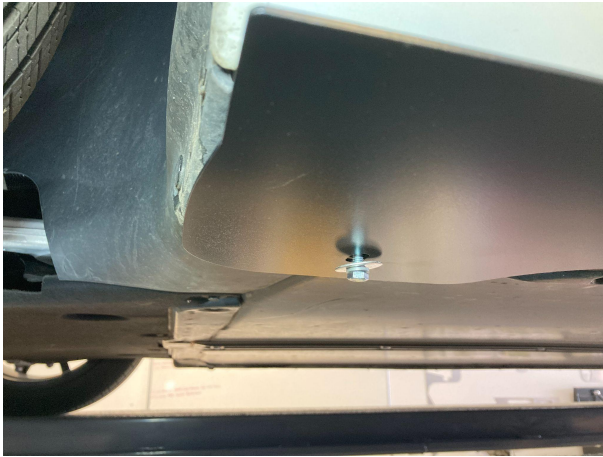
Hardware needed:

- (2) M6-1.0 x 45mm bolts
- (2) ¼” lock washers
- (2) ¼” ID, 1” OD washers
- (2) 15mm spacers

Tools needed:

- 10mm socket + ratchet wrench + friend/helper

BOLT AT FRONT EXAMPLE:



15MM SPACER EXAMPLE





8.) Install the supplied M8 bolts through the 6 slots into the car *loosely*. They also require 15mm spacers, lock washers, and M8 washers.

Hardware needed:

(6) M8-1.25 x 45mm Bolts

(6) M8 Lock Washers

(6) M8 washers (5/16" ID, 1.25" OD)

(6) 15mm nylon spacers

Tools needed:

- 13 mm socket + ratchet wrench + friend/helper





9.) Your skirt has been installed loosely. Move it along the slots where you want it positioned then secure each bolt tightly. **NOTE:** if you want to truly make sure the skirt cannot come loose under any circumstance... remove one bolt at a time and apply blue threadlocker and reinstall.

10.) If you have fins use the fin hardware to install. Use a 5/32" allen wrench and 7/16" open end wrench. Point bolts downward. **USE OIL ON THE THREADS WHEN INSTALLING (and removing in the future if necessary) OR YOU WILL REGRET YOUR ENTIRE LIFE.**

11.) If you have edge trim that needs to be installed, prep the surface with isopropyl alcohol then apply it. Heat slightly to form around edges and use diagonal cutters to cut to size.

12.) Repeat on the other side of the car!

13.) ENJOY YOUR NEW AERO. Feel free to contact us with any questions you might have!

Phone: 661-809-0954

Email: costas@fspeinc.com

