

**FS Performance Engineering**  
Lexus IS300 Front Splitter Installation Instructions

**Tools Needed:**

- Ratchet Wrench
- 10mm Socket
- Flat head screwdriver
- Phillip's head screwdriver
- ¼" Drill bit
- Drill
- Heat gun/Diagonal cutters/Isopropyl alcohol/Clean cloth(if you ordered edge trim)

**What's Supplied:**

**Parts:**

(1) Lexus Splitter

**Hardware:**

**Bag 1**

(2) M6-1.0 x 12mm Hex Head Bolts

(2) M6-1.0 Nyloc Nuts

**Bag 2**

(6) M6-1.0 x 20mm Hex Head Bolts

(6) M6-1.0 Nyloc Nuts

(12) ¼"x1" Washers

**Bag 3**

(2) #12 x 1.25" Pointy Screws

(2) ¼"x1" Washers

(2) 5mm Spacers



**IMPORTANT NOTE BEFORE INSTALLING THE SPLITTER:**

If you purchased splitter rods, we recommend finding a mounting location during splitter installation.

You can either mount them to the bumper, or to brackets you may fabricate that mount behind the grill.

Splitter rods installation is up to you. We supply a guide that lets you know what tools are required for installation.

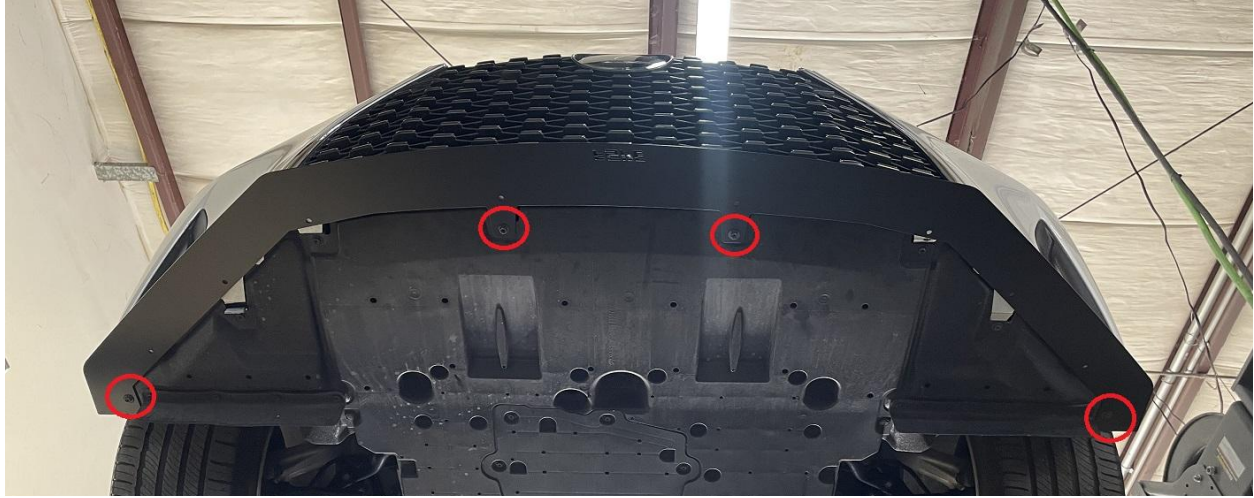
Splitter rod installation usually requires the skid plate to be removed for access behind the bumper.

**Steps:**

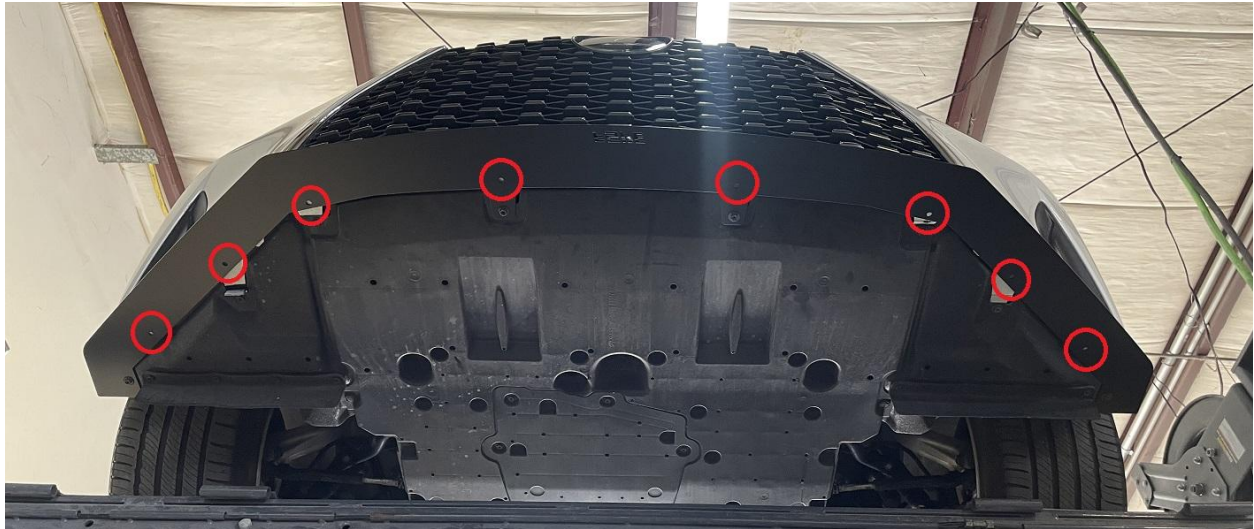
- 1.) Begin by raising your vehicle. Place it securely on jack stands. Or alternatively use a vehicle lift.
- 2.) Remove the (4) OEM screws shown with a ratchet wrench and 10mm socket. These are the two inner screws at the front that hold the skid plate, and two outer screws.



3.) Install your splitter onto the vehicle using the screws just removed. Don't over tighten these screws as they are only threaded into plastic.



4.) Using a ¼” drill bit, drill through the (8) holes in the splitter into the bottom of the bumper. Only drill through the plastic bumper. Don’t drill into anything above it. The front two will have something right above them.



5.) Remove your splitter from the car from the (4) screws holding it.

6.) Remove the OEM skid plate under the engine. There are (13) screws with 10mm heads, and (3) pop clips. Then remove the screw found on each side holding the outer skid plates - see pics.

**REMOVE THIS TRAY:**



**THREE POP CLIPS:**

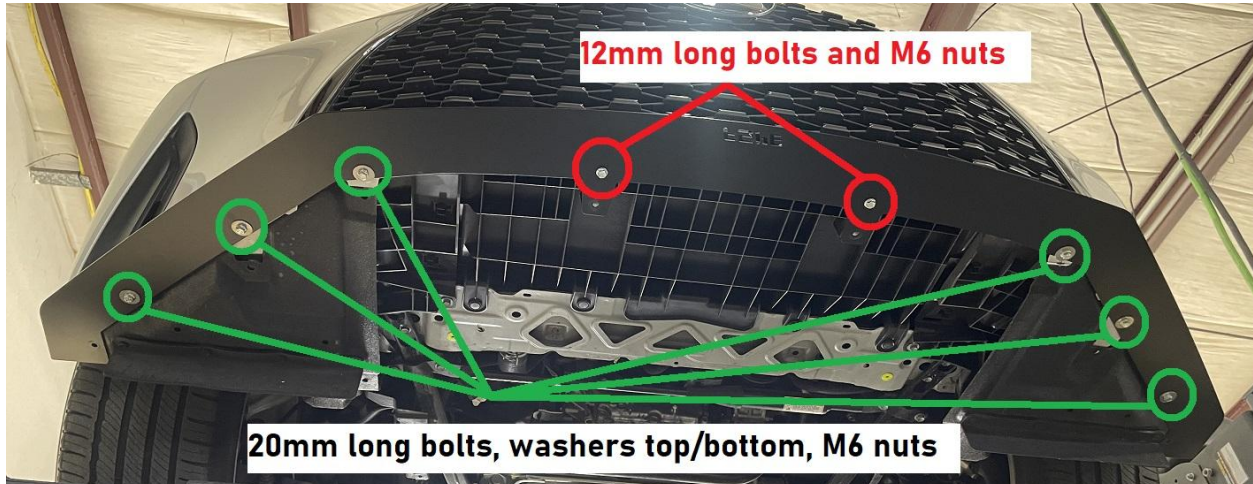


**REMOVE SCREW FROM EACH SIDE:**



7.) Install your splitter into the (8) drilled holes. Tighten securely.

- The center two holes use only the M6-1.0 x 12mm bolts pointing upward, and nyloc nuts.
- The outer 6 holes use M6-1.0 x 20mm bolts pointing upward with washers under the heads and on the inside of the bumper, and nyloc nuts on top.



8.) Install the supplied #12 x 1.25" screws into the outer holes in the splitter. Use washers under the heads. Use 5mm spacers between the splitter and car.



9.) Reinstall the two screws into the outer two skid plates, then reinstall the skid plate. Install 2 screws into the remaining holes in the splitter where it meets up at the front with the skid plate.



10.) If you don't have edge trim, skip to the next step.

If you have edge trim: clean the top edge of the side skirts with isopropyl alcohol. Apply the edge trim. Use light heat on the trim to increase flexibility around curves/edges. Cut to size with your diagonal cutters. The edge trim mounts on top and hangs over edges.

11.) You are done! Enjoy your new splitter! Feel free to tag us online using #FSPerformanceEngineering. If you have any questions don't hesitate to contact us.



PHONE: 661-809-0954

EMAIL: [costas@fspeinc.com](mailto:costas@fspeinc.com)

THANK YOU :)